



DEPARTMENT OF PERMITTING, ENVIRONMENT, AND REGULATORY
AFFAIRS (PERA)
BOARD AND CODE ADMINISTRATION DIVISION
NOTICE OF ACCEPTANCE (NOA)

MIAMI-DADE COUNTY
PRODUCT CONTROL SECTION
11805 SW 26 Street, Room 208
Miami, Florida 33175-2474
T (786) 315-2590 F (786) 315-2599
www.miamidade.gov/pera/

PGT Industries
1070 Technology Drive
North Venice, FL 34275

SCOPE:

This NOA is being issued under the applicable rules and regulations governing the use of construction materials. The documentation submitted has been reviewed and accepted by Miami-Dade County PERA - Product Control Section to be used in Miami Dade County and other areas where allowed by the Authority Having Jurisdiction (AHJ).

This NOA shall not be valid after the expiration date stated below. The Miami-Dade County Product Control Section (In Miami Dade County) and/or the AHJ (in areas other than Miami Dade County) reserve the right to have this product or material tested for quality assurance purposes. If this product or material fails to perform in the accepted manner, the manufacturer will incur the expense of such testing and the AHJ may immediately revoke, modify, or suspend the use of such product or material within their jurisdiction. PERA reserves the right to revoke this acceptance, if it is determined by Miami-Dade County Product Control Section that this product or material fails to meet the requirements of the applicable building code. This product is approved as described herein, and has been designed to comply with the Florida Building Code, including the High Velocity Hurricane Zone.

DESCRIPTION: Series "SH-200" Aluminum Single Hung Window – N.I.

APPROVAL DOCUMENT: Drawing No. MD-SH200-01, titled "Single Hung Window Installation" sheets 1 through 8 of 8, dated 05/11/11 with revision A dated 10/10/11, prepared by manufacturer, signed and sealed by Anthony Lynn Miller, P.E., bearing the Miami-Dade County Product Control Revision stamp with the Notice of Acceptance number and expiration date by the Miami-Dade County Product Control Section.

MISSILE IMPACT RATING: None

LABELING: Each unit shall bear a permanent label with the manufacturer's name or logo, city, state, model/series, and following statement: "Miami-Dade County Product Control Approved", unless otherwise noted herein.

RENEWAL of this NOA shall be considered after a renewal application has been filed and there has been no change in the applicable building code negatively affecting the performance of this product.

TERMINATION of this NOA will occur after the expiration date or if there has been a revision or change in the materials, use, and/or manufacture of the product or process. Misuse of this NOA as an endorsement of any product, for sales, advertising or any other purposes shall automatically terminate this NOA. Failure to comply with any section of this NOA shall be cause for termination and removal of NOA.

ADVERTISEMENT: The NOA number preceded by the words Miami-Dade County, Florida, and followed by the expiration date may be displayed in advertising literature. If any portion of the NOA is displayed, then it shall be done in its entirety.

INSPECTION: A copy of this entire NOA shall be provided to the user by the manufacturer or its distributors and shall be available for inspection at the job site at the request of the Building Official. This NOA revises NOA # 11-0614.01 and consists of this page 1 and evidence page E-1, as well as approval document mentioned above.

The submitted documentation was reviewed by **Manuel Perez, P.E.**



NOA No. 11-1013.12
Expiration Date: September 01, 2016
Approval Date: December 08, 2011
Page 1

NOTICE OF ACCEPTANCE: EVIDENCE SUBMITTED

A. DRAWINGS

1. Manufacturer's die drawings and sections.
2. Drawing No. **MD-SH200-01**, titled "Single Hung Window Installation" Sheets 1 through 8 of 8, dated 05/11/11 with revision A dated 10/10/11, prepared by manufacturer, signed and sealed by Anthony Lynn Miller, P.E.

B. TESTS

1. Test reports on: 1) Air Infiltration Test, per FBC, TAS 202-94
2) Uniform Static Air Pressure Test, Loading per FBC TAS 202-94
3) Water Resistance Test, per FBC, TAS 202-94
4) Forced Entry Test, per FBC 2411 3.2.1, TAS 202-94
along with marked-up drawings and installation diagram of series SH-200 aluminum single hung window, prepared by Fenestration Testing Laboratory, Inc., Test Report No. **FTL-6479**, specimens 1 thru 26, dated 03/28/11, signed and sealed by Marlin D. Brinson, P.E.
(Submitted under previous NOA #11-0614.01)

C. CALCULATIONS:

1. Anchor verification calculations and structural analysis, complying with FBC-2007 and FBC-2010, dated 06/08/11 and updated on 10/07/11, prepared, signed and sealed by Anthony Lynn Miller, P.E.
2. Glazing complies with ASTM E1300-04

D. QUALITY ASSURANCE

1. Miami-Dade Department of Permitting, Environment, and Regulatory Affairs (PERA).

E. MATERIAL CERTIFICATIONS

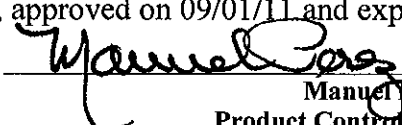
1. None.

F. STATEMENTS

1. Statement letter of conformance to the FBC-2007 and FBC-2010, dated 10/07/11, signed and sealed by Anthony Lynn Miller, P.E.
2. Statement letter of no financial interest, dated 10/07/11, signed and sealed by Anthony Lynn Miller, P.E.
3. Proposal No. **10-1066** issued by BNC, dated 11/09/10, signed by Ishaq Chanda, P. E.

G. OTHERS

1. Notice of Acceptance No. **11-0614.01**, issued to PGT Industries for their Series "SH-200" Aluminum Single Hung Window – N.I., approved on 09/01/11 and expiring on 09/01/16.


Manuel Perez, P.E.

Product Control Examiner
NOA No. 11-1013.12

Expiration Date: September 01, 2016

Approval Date: December 08, 2011

GENERAL NOTES: SERIES 200 NON-IMPACT SINGLE HUNG WINDOW

1) THIS PRODUCT HAS BEEN DESIGNED & TESTED TO COMPLY WITH THE REQUIREMENTS OF THE FLORIDA BUILDING CODE, INCLUDING THE HIGH VELOCITY HURRICANE ZONE (HVHZ).

2) SHUTTERS ARE REQUIRED WHEN USED IN WIND-BORNE DEBRIS REGIONS.

3) FOR MASONRY APPLICATIONS IN MIAMI-DADE COUNTY, USE ONLY MIAMI-DADE COUNTY APPROVED MASONRY ANCHORS. MATERIALS USED FOR ANCHOR EVALUATIONS WERE SOUTHERN PINE, ASTM C90 CONCRETE MASONRY UNITS AND CONCRETE WITH MIN. KSI PER ANCHOR TYPE, SEE TABLES 5 & 6, SHEET 4 & 5.

4) MASONRY ANCHORS MAY BE USED INTO WOOD AS PER TABLE 5, SHEET 4. ALL WOOD BUCKS LESS THAN 1-1/2" THICK ARE TO BE CONSIDERED 1X INSTALLATIONS. 1X WOOD BUCKS ARE OPTIONAL IF UNIT IS INSTALLED DIRECTLY TO SUBSTRATE. WOOD BUCKS DEPICTED AS 2X ARE 1-1/2" THICK OR GREATER. 1X AND 2X BUCKS (WHEN USED) SHALL BE DESIGNED TO PROPERLY TRANSFER LOADS TO THE STRUCTURE. WOOD BUCK DESIGN AND INSTALLATION IS THE RESPONSIBILITY OF THE ENGINEER OR ARCHITECT OF RECORD.

5) ANCHOR EMBEDMENT TO BASE MATERIAL SHALL BE BEYOND WALL DRESSING OR STUCCO. USE ANCHORS OF SUFFICIENT LENGTH AS SPECIFIED ON TABLE 5 & 6, SHEET 4 & 5. NARROW JOINT SEALANT IS USED ON ALL FOUR CORNERS OF THE FRAME. INSTALLATION ANCHORS SHOULD BE SEALED. OVERALL SEALING/FLASHING STRATEGY FOR WATER RESISTANCE OF INSTALLATION SHALL BE DONE BY OTHERS AND IS BEYOND THE SCOPE OF THESE INSTRUCTIONS.

6) SHIMS ARE REQUIRED AT EACH ANCHOR LOCATION WHERE THE PRODUCT IS NOT FLUSH TO THE SUBSTRATE. USE SHIMS CAPABLE OF TRANSFERRING APPLIED LOADS. WOOD BUCKS, BY OTHERS, MUST BE SUFFICIENTLY ANCHORED TO RESIST LOADS IMPOSED ON THEM BY THE WINDOW.

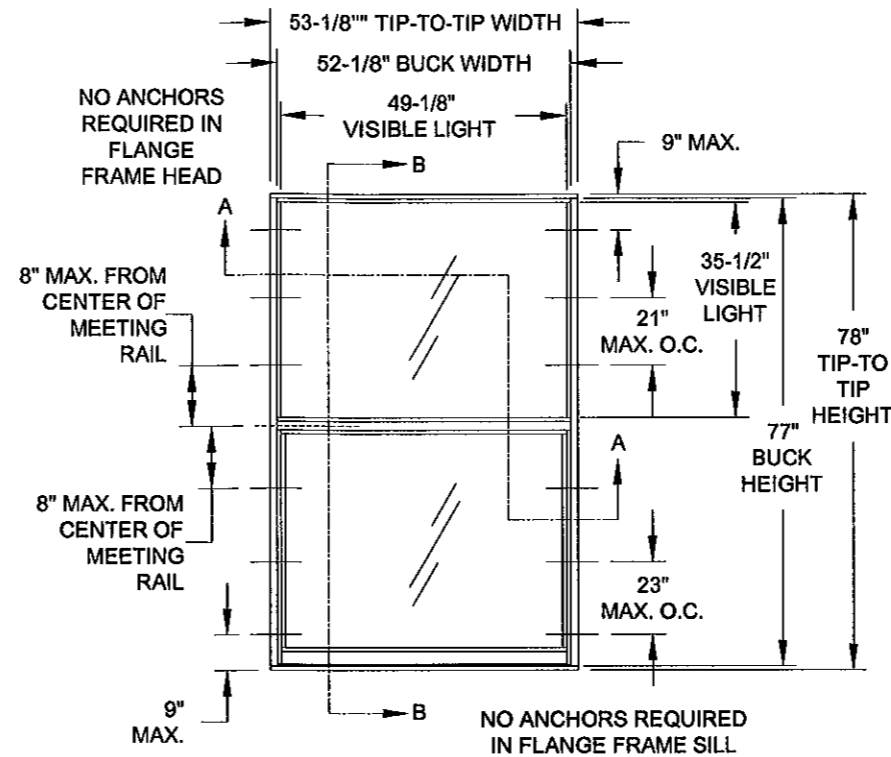
7) DESIGN PRESSURES:

- A. NEGATIVE DESIGN LOADS BASED ON STRUCTURAL TEST PRESSURE, FRAME ANALYSIS AND GLASS PER ASTM E1300.
- B. POSITIVE DESIGN LOADS BASED ON WATER TEST PRESSURE, STRUCTURAL TEST PRESSURE, FRAME ANALYSIS AND GLASS PER ASTM E1300.

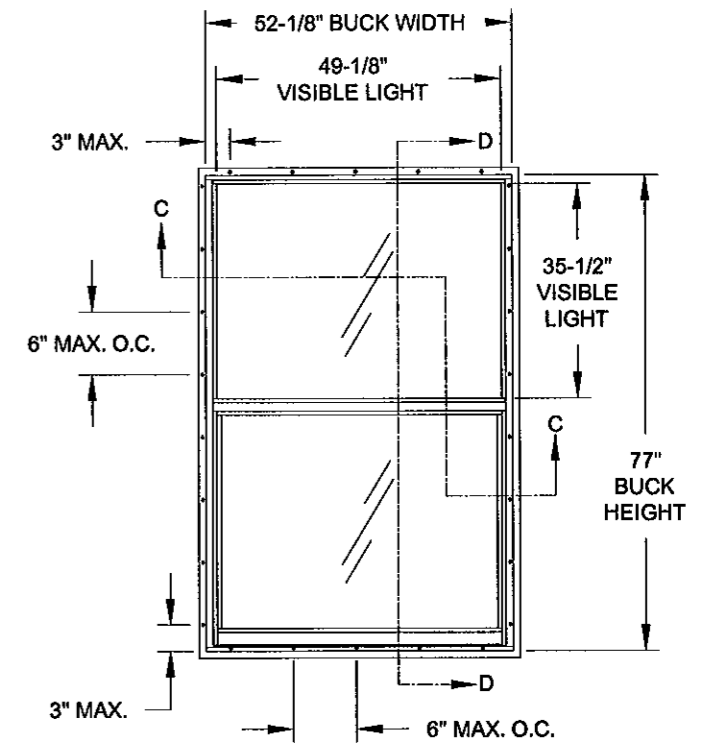
8) THE ANCHORAGE METHODS SHOWN HAVE BEEN DESIGNED TO RESIST THE WINDLOADS CORRESPONDING TO THE REQUIRED DESIGN PRESSURE. THE 33 1/3% STRESS INCREASE HAS NOT BEEN USED IN THE DESIGN OF THIS PRODUCT. THE 1.6 LOAD DURATION FACTOR WAS USED FOR THE EVALUATION OF ANCHORS INTO WOOD. ANCHORS THAT COME INTO CONTACT WITH OTHER DISSIMILAR MATERIALS SHALL MEET THE REQUIREMENTS OF THE FLORIDA BUILDING CODE FOR CORROSION RESISTANCE.

9) REFERENCES: TEST REPORTS FTL-6479; ELCO ULTRACON NOA; ELCO CRETEFLEX NOA; ANSI/AF&PA NDS-2005 FOR WOOD CONSTRUCTION AND ADM-2005 ALUMINUM DESIGN MANUAL.

10) THE 200 SERIES SINGLE HUNG WINDOW WAS FORMERLY KNOWN AS THE 4000 SERIES (FLANGE FRAME) OR 4001 SERIES (FIN FRAME).

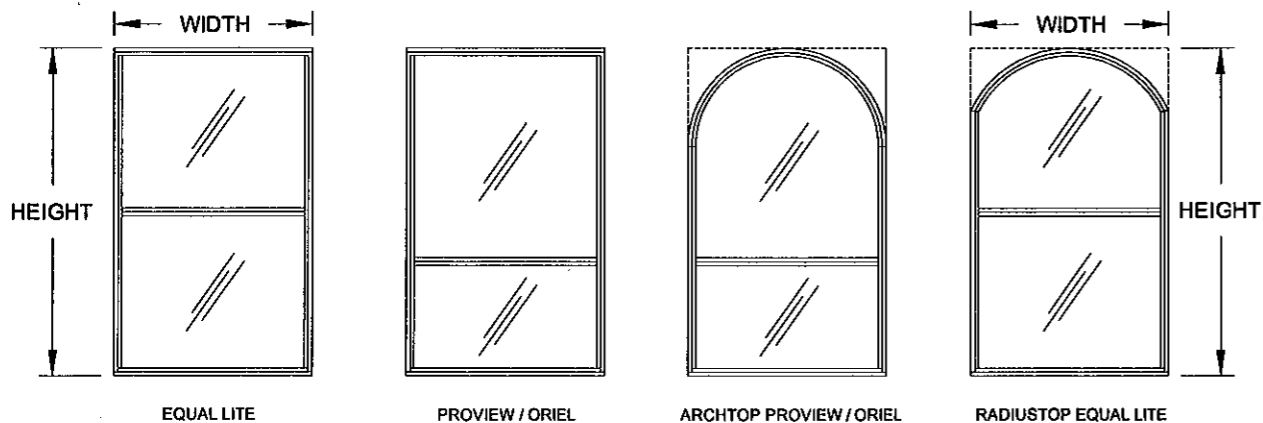


**TYP. FLANGE FRAME ELEVATION
(TESTED UNIT)**



**TYP. INTEGRAL FIN FRAME ELEVATION
(TESTED UNIT)**

WINDOW SHAPES AND SASH CONFIGURATIONS AS SHOWN BELOW OR SIMILAR, MAY BE USED BY INSCRIBING THE SHAPE IN A BLOCK AND OBTAINING DESIGN PRESSURES FOR THAT BLOCK SIZE FROM THE TABLES ON SHEETS 2 & 3.



DESIGN PRESSURE RATING	IMPACT RATING
VARIABLES, SEE SHEETS 2 & 3	NOT RATED FOR IMPACT RESISTANCE

GUIDE TO SHEETS:

- GENERAL NOTES..... 1
- ELEVATIONS..... 1
- DESIGN PRESSURES..... 2 & 3
- INSTALLATION, FLANGE..... 4
- INSTALLATION, INTEGRAL FIN... 5
- ANCHOR QUANTITIES..... 6
- GLAZING DETAILS..... 7
- CORNER ASSEMBLY..... 7
- EXTRUSION PROFILES..... 8
- PARTS LIST..... 8

PRODUCT REVISED
as complying with the Florida
Building Code
Acceptance No 11-1013.12
Expiration Date SEPT. 1, 2016
By *Maurice Perez*
Miami Dade Product Control

ANTHONY LYNN MILLER
LICENSE
No. 58705
10/10/11
STATE OF FLORIDA
PROFESSIONAL ENGINEER
A. LYNN MILLER, P.E.
P.E.# 58705

PGT
1070 TECHNOLOGY DRIVE
N. VENICE, FL 34275
P.O. BOX 1529
NOKOMIS, FL 34274
CERT. OF AUTH. #29296

Revised By: JJ	Date: 10/10/11	Revision: 2010 FBC NOTE
Revised By:	Date:	Revision:
Description: GENERAL NOTES & ELEVATION		Drawn By: J ROSOWSKI
Title: SINGLE HUNG WINDOW INSTALLATION		Date: 05/11/11
Series/Model: SH-200	Scale: NTS	Sheet: 1 OF 8
Drawing No. MD-SH200-01	Rev: A	

TABLE 1:

Maximum Window Height ¹	Sash Height ² (see Figure A, this sheet)	Design Pressure (lbs/ft ²) for Glass Type A, Fin & Flange Frame															
		Maximum Window Width ¹															
		19-1/8"	26-1/2"	33"	37"	41"	45"	49"	53-1/8"	19-1/8"	26-1/2"	33"	37"	41"	45"	49"	53-1/8"
23"	11-9/16" (Equal Lite)	+55.0	-90.0	+55.0	-90.0	+55.0	-90.0	+55.0	-90.0	+55.0	-90.0	+55.0	-90.0	+55.0	-90.0	+55.0	-90.0
37"	under 18-9/16"	+55.0	-90.0	+55.0	-90.0	+55.0	-75.2	+55.0	-65.5	+55.0	-57.3	+50.2	-50.2	+44.8	-44.8	+39.9	-39.9
	18-9/16" (Equal Lite)	+55.0	-90.0	+55.0	-90.0	+55.0	-84.2	+55.0	-74.5	+55.0	-66.5	+55.0	-61.0	+55.0	-57.7	+55.0	-55.0
38-3/8"	over 18-9/16"	+55.0	-90.0	+55.0	-90.0	+55.0	-75.2	+55.0	-65.5	+55.0	-57.3	+50.2	-50.2	+44.8	-44.8	+39.9	-39.9
	under 15-7/8"	+55.0	-90.0	+55.0	-87.1	+55.0	-73.4	+55.0	-63.8	+55.0	-56.8	+50.0	-50.0	+44.8	-44.8	+40.0	-40.0
	15-7/8" thru 19-3/16" ³	+55.0	-90.0	+55.0	-90.0	+55.0	-78.7	+55.0	-68.0	+55.0	-58.5	+51.1	-51.1	+45.9	-45.9	+41.3	-41.3
45"	19-1/4" (Equal Lite)	+55.0	-90.0	+55.0	-90.0	+55.0	-82.7	+55.0	-72.6	+55.0	-63.5	+55.0	-57.9	+54.2	-54.2	+51.5	-51.5
	over 19-1/4"	+55.0	-90.0	+55.0	-87.1	+55.0	-73.4	+55.0	-63.8	+55.0	-56.8	+50.0	-50.0	+44.8	-44.8	+40.0	-40.0
	under 19-9/16"	+55.0	-81.5	+55.0	-72.3	+55.0	-61.3	+55.0	-55.3	+50.5	-50.5	+45.8	-45.8	+42.0	-42.0	+38.7	-38.7
49"	19-9/16" thru 22-5/8" ³	+55.0	-90.0	+55.0	-87.9	+55.0	-74.0	+55.0	-64.3	+55.0	-56.9	+50.1	-50.1	+44.8	-44.8	+40.0	-40.0
	22-9/16" (Equal Lite)	+55.0	-90.0	+55.0	-90.0	+55.0	-78.8	+55.0	-68.1	+55.0	-58.5	+51.1	-51.1	+46.0	-46.0	+41.4	-41.4
	over 22-9/16"	+55.0	-81.5	+55.0	-72.3	+55.0	-61.3	+55.0	-55.3	+50.5	-50.5	+45.8	-45.8	+42.0	-42.0	+38.7	-38.7
50-5/8"	under 20-1/8"	+55.0	-71.6	+55.0	-62.8	+55.0	-55.4	+50.3	-50.3	+45.9	-45.9	+41.7	-41.7	+38.9	-38.9	+36.2	-36.2
	20-1/8" thru 24-1/2" ³	+55.0	-90.0	+55.0	-82.5	+55.0	-69.5	+55.0	-61.6	+55.0	-55.4	+49.3	-49.3	+44.6	-44.6	+40.0	-40.0
	24-9/16" (Equal Lite)	+55.0	-90.0	+55.0	-90.0	+55.0	-76.4	+55.0	-66.5	+55.0	-57.8	+50.4	-50.4	+45.0	-45.0	+40.1	-40.1
61"	over 24-9/16"	+55.0	-71.6	+55.0	-62.8	+55.0	-55.4	+50.3	-50.3	+45.9	-45.9	+41.7	-41.7	+38.9	-38.9	+36.2	-36.2
	under 20-13/16"	+55.0	-67.8	+55.0	-59.9	+53.3	-53.3	+48.5	-48.5	+44.1	-44.1	+40.2	-40.2	+37.6	-37.6	+34.8	-34.8
	20-13/16" thru 24-11/16" ³	+55.0	-89.6	+55.0	-80.3	+55.0	-67.7	+55.0	-60.6	+54.2	-54.2	+49.0	-49.0	+44.2	-44.2	+40.0	-40.0
63"	24-3/4" (Equal Lite)	+55.0	-90.0	+55.0	-90.0	+55.0	-75.4	+55.0	-65.7	+55.0	-57.4	+50.3	-50.3	+44.9	-44.9	+39.9	-39.9
	over 24-3/4"	+55.0	-67.8	+55.0	-59.9	+53.3	-53.3	+48.5	-48.5	+44.1	-44.1	+40.2	-40.2	+37.6	-37.6	+34.8	-34.8
	under 24-15/16"	+55.0	-56.0	+43.8	-43.8	+41.9	-41.9	+39.1	-39.1	+36.0	-36.0	+32.6	-32.6	+30.0	-30.0	+27.6	-27.6
73"	24-15/16" thru 30-5/8" ³	+55.0	-75.0	+55.0	-66.0	+55.0	-57.4	+51.9	-51.9	+47.4	-47.4	+43.2	-43.2	+39.9	-39.9	+37.3	-37.3
	30-9/16" (Equal Lite)	+55.0	-87.9	+55.0	-75.8	+55.0	-66.6	+55.0	-59.7	+53.5	-53.5	+48.7	-48.7	+43.9	-43.9	+39.9	-39.9
	over 30-9/16"	+55.0	-67.8	+55.0	-59.9	+53.3	-53.3	+48.5	-48.5	+44.1	-44.1	+40.2	-40.2	+37.6	-37.6	+34.8	-34.8
78"	under 25-3/4"	+54.7	-54.7	+41.2	-41.2	+40.3	-40.3	+37.8	-37.8	+34.6	-34.6	+31.3	-31.3	+28.9	-28.9	+26.5	-26.5
	25-3/4" thru 31-5/8" ³	+55.0	-72.0	+55.0	-63.2	+55.0	-55.7	+50.5	-50.5	+46.1	-46.1	+41.9	-41.9	+39.0	-39.0	+36.3	-36.3
	31-9/16" (Equal Lite)	+55.0	-83.9	+55.0	-71.7	+55.0	-64.8	+55.0	-58.2	+52.4	-52.4	+47.9	-47.9	+43.3	-43.3	+39.7	-39.7
78"	over 31-9/16"	+55.0	-67.8	+55.0	-59.9	+53.3	-53.3	+48.5	-48.5	+44.1	-44.1	+40.2	-40.2	+37.6	-37.6	+34.8	-34.8
	under 29-3/4"	+53.3	-53.3	+39.7	-39.7	+39.1	-39.1	+36.7	-36.7	+33.4	-33.4	+30.3	-30.3	+28.0	-28.0	+25.8	-25.8
	29-3/4" thru 36-5/8" ³	+55.0	-61.0	+52.0	-52.0	+48.2	-48.2	+44.0	-44.0	+40.1	-40.1	+37.0	-37.0	+34.1	-34.1	+31.4	-31.4
78"	36-9/16" (Equal Lite)	+55.0	-68.3	+55.0	-56.3	+52.1	-52.1	+51.5	-51.5	+47.0	-47.0	+42.7	-42.7	+39.6	-39.6	+37.0	-37.0
	over 36-9/16"	+55.0	-67.8	+55.0	-56.3	+52.1	-52.1	+48.5	-48.5	+44.1	-44.1	+40.2	-40.2	+37.6	-37.6	+34.8	-34.8
	under 31-3/4"	+53.3	-53.3	+39.7	-39.7	+39.1	-39.1	+36.7	-36.7	+33.4	-33.4	+30.3	-30.3	+28.0	-28.0	+25.8	-25.8
78"	31-3/4" thru 39" ³	+55.0	-58.3	+48.0	-48.0	+45.2	-45.2	+41.2	-41.2	+37.9	-37.9	+34.8	-34.8	+31.7	-31.7	+29.5	-29.5
	39-1/16" (Equal Lite)	+55.0	-62.5	+50.8	-50.8	+46.3	-46.3	+45.2	-45.2	+44.2	-44.2	+40.3	-40.3	+37.7	-37.7	+34.9	-34.9

¹ Tip-to-tip dimensions for flange windows shown. For fin windows or buck dimensions, subtract 1".
² Overall sash height. For clear daylight height, subtract 3-9/16".
³ Size range includes the standard Pro-View (3-over-2 configuration) for the given Window Height.
 For overall sash width, subtract 2-15/16" from the buck dimension.

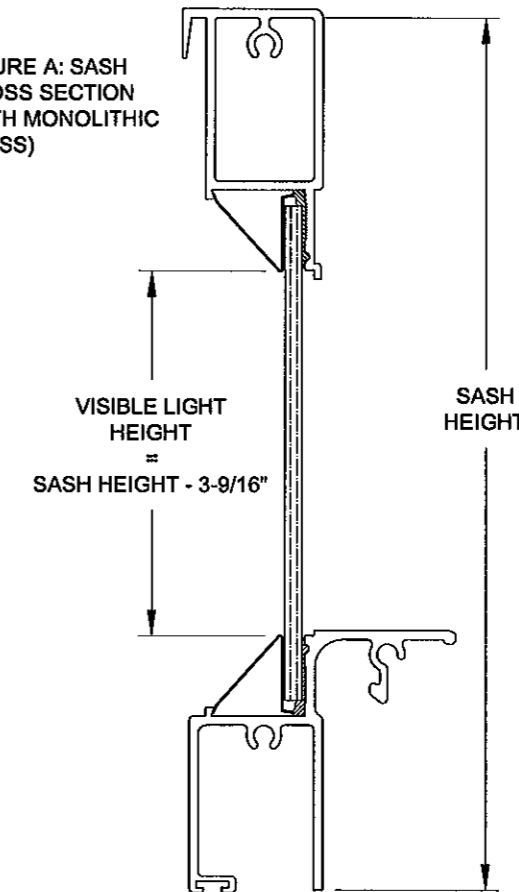
TABLE 2:

Monolithic Glass Types	
A	1/8" Annealed
B	1/8" Tempered
C	3/16" Annealed
D	3/16" Tempered
E	1/4" Annealed
F	1/4" Tempered

TABLE 3:

Insulated Glass Types	
G	1/8" Annealed, 1/4" Airspace, 1/8" Annealed
H	3/16" Annealed, 3/16" Airspace, 1/8" Annealed
I	1/8" Tempered, 1/4" Airspace, 1/8" Tempered
J	3/16" Tempered, 3/16" Airspace, 1/8" Tempered

FIGURE A: SASH CROSS SECTION (WITH MONOLITHIC GLASS)



NOTES

- 1) USE THIS TABLE FOR ALL WINDOWS THAT ARE GLAZED WITH 1/8" ANNEALED GLASS (TYPE A).
- 2) FOR SIZES NOT SHOWN, ROUND UP TO THE NEXT AVAILABLE WIDTH OR HEIGHT DIMENSION SHOWN ON THE TABLE.

PRODUCT REVISED as complying with the Florida Building Code Acceptance No. 11-1013.12 Expiration Date SEPT. 1, 2016
 By *Manuel Perez*
 Miami/Dade Product Control

Drawn By: J ROSOWSKI	Drawn Date: 05/11/11	Description: DESIGN PRESSURE A Title: SINGLE HUNG WINDOW INSTALLATION Series/Model: SH-200	Revision: NO CHANGE	Revision: 05/11/11	Sheet: 2 OF 8	Rev: A
Revised By: JJ	Revised Date: 10/10/11		Scale: NTS	Drawing No. MD-SH200-01		
			Cert. of Auth. #29296 A. LYNN MILLER, P.E. P.E.# 58705			

TABLE 4:

Maximum Window Height ¹	Sash Height ² (see Figure A, this sheet)	Design Pressure (lbs/ft ²) for Glass Type B - J, Fin & Flange Frame																
		Maximum Window Width ¹																
		19-1/8"	26-1/2"	33"	37"	41"	45"	49"	53-1/8"	19-1/8"	26-1/2"	33"	37"	41"	45"	49"	53-1/8"	
23"	11-9/16" (Equal Lite)	+55.0	-90.0	+55.0	-90.0	+55.0	-90.0	+55.0	-90.0	+55.0	-90.0	+55.0	-90.0	+55.0	-90.0	+55.0	-90.0	
37"	under 18-9/16"	+55.0	-90.0	+55.0	-90.0	+55.0	-90.0	+55.0	-90.0	+55.0	-90.0	+55.0	-84.3	+55.0	-78.0	+55.0	-72.9	
	18-9/16" (Equal Lite)	+55.0	-90.0	+55.0	-90.0	+55.0	-90.0	+55.0	-90.0	+55.0	-90.0	+55.0	-90.0	+55.0	-81.1	+55.0	-73.4	
38-3/8"	over 18-9/16"	+55.0	-90.0	+55.0	-90.0	+55.0	-90.0	+55.0	-90.0	+55.0	-90.0	+55.0	-84.3	+55.0	-78.0	+55.0	-72.9	
	under 15-7/8"	+55.0	-90.0	+55.0	-90.0	+55.0	-90.0	+55.0	-90.0	+55.0	-88.5	+55.0	-81.8	+55.0	-75.0	+55.0	-68.5	
	15-7/8" thru 19-3/16" ³	+55.0	-90.0	+55.0	-90.0	+55.0	-90.0	+55.0	-90.0	+55.0	-90.0	+55.0	-87.9	+55.0	-78.8	+55.0	-71.2	
45"	19-1/4" (Equal Lite)	+55.0	-90.0	+55.0	-90.0	+55.0	-90.0	+55.0	-90.0	+55.0	-90.0	+55.0	-87.9	+55.0	-78.8	+55.0	-71.2	
	over 19-1/4"	+55.0	-90.0	+55.0	-90.0	+55.0	-90.0	+55.0	-90.0	+55.0	-88.5	+55.0	-81.8	+55.0	-75.0	+55.0	-68.5	
	under 19-9/16"	+55.0	-90.0	+55.0	-90.0	+55.0	-90.0	+55.0	-90.0	+55.0	-86.5	+55.0	-80.2	+55.0	-73.2	+55.0	-59.7	
49"	19-9/16" thru 22-5/8" ³	+55.0	-90.0	+55.0	-90.0	+55.0	-90.0	+55.0	-90.0	+55.0	-89.1	+55.0	-78.5	+55.0	-70.0	+55.0	-63.0	
	22-9/16" (Equal Lite)	+55.0	-90.0	+55.0	-90.0	+55.0	-90.0	+55.0	-90.0	+55.0	-89.3	+55.0	-78.5	+55.0	-70.0	+55.0	-63.0	
	over 22-9/16"	+55.0	-90.0	+55.0	-90.0	+55.0	-90.0	+55.0	-86.5	+55.0	-80.2	+55.0	-73.2	+55.0	-66.3	+55.0	-59.7	
50-5/8"	under 20-1/8"	+55.0	-90.0	+55.0	-90.0	+55.0	-86.0	+55.0	-81.8	+55.0	-75.7	+55.0	-69.2	+55.0	-62.8	+55.0	-57.7	
	20-1/8" thru 24-1/2" ³	+55.0	-90.0	+55.0	-90.0	+55.0	-90.0	+55.0	-90.0	+55.0	-84.8	+55.0	-74.2	+55.0	-65.9	+55.0	-59.1	
	24-9/16" (Equal Lite)	+55.0	-90.0	+55.0	-90.0	+55.0	-90.0	+55.0	-90.0	+55.0	-84.8	+55.0	-74.2	+55.0	-65.9	+55.0	-59.1	
61"	over 24-9/16"	+55.0	-90.0	+55.0	-90.0	+55.0	-86.0	+55.0	-81.8	+55.0	-75.7	+55.0	-69.2	+55.0	-62.8	+55.0	-57.7	
	under 20-13/16"	+55.0	-90.0	+55.0	-90.0	+55.0	-83.5	+55.0	-79.1	+55.0	-74.0	+55.0	-67.3	+55.0	-61.9	+55.0	-56.8	
	20-13/16" thru 24-11/16" ³	+55.0	-90.0	+55.0	-90.0	+55.0	-90.0	+55.0	-90.0	+55.0	-83.2	+55.0	-72.7	+55.0	-64.5	+55.0	-57.8	
63"	24-3/4" (Equal Lite)	+55.0	-90.0	+55.0	-90.0	+55.0	-90.0	+55.0	-90.0	+55.0	-83.2	+55.0	-72.7	+55.0	-64.5	+55.0	-57.8	
	over 24-3/4"	+55.0	-90.0	+55.0	-90.0	+55.0	-83.5	+55.0	-79.1	+55.0	-74.0	+55.0	-67.3	+55.0	-61.9	+55.0	-56.8	
	under 24-15/16"	+55.0	-87.9	+55.0	-75.6	+55.0	-65.7	+55.0	-62.3	+55.0	-60.0	+55.0	-56.5	+53.2	-53.2	+49.6	-49.6	
73"	24-15/16" thru 30-5/8" ³	+55.0	-87.9	+55.0	-75.8	+55.0	-74.1	+55.0	-74.1	+55.0	-74.1	+55.0	-65.5	+55.0	-57.5	+51.1	-51.1	
	30-9/16" (Equal Lite)	+55.0	-87.9	+55.0	-75.8	+55.0	-74.1	+55.0	-74.1	+55.0	-74.1	+55.0	-65.5	+55.0	-57.5	+51.1	-51.1	
	over 30-9/16"	+55.0	-87.9	+55.0	-75.8	+55.0	-74.1	+55.0	-74.1	+55.0	-74.0	+55.0	-65.5	+55.0	-57.5	+51.1	-51.1	
78"	under 25-3/4"	+55.0	-83.9	+55.0	-71.7	+55.0	-62.0	+55.0	-59.9	+55.0	-57.8	+54.5	-54.5	+51.3	-51.3	+48.3	-48.3	
	25-3/4" thru 31-5/8" ³	+55.0	-83.9	+55.0	-71.7	+55.0	-69.4	+55.0	-69.4	+55.0	-69.4	+55.0	-64.5	+55.0	-56.5	+50.2	-50.2	
	31-9/16" (Equal Lite)	+55.0	-83.9	+55.0	-71.7	+55.0	-69.4	+55.0	-69.4	+55.0	-69.4	+55.0	-64.5	+55.0	-56.5	+50.2	-50.2	
78"	over 31-9/16"	+55.0	-83.9	+55.0	-71.7	+55.0	-69.4	+55.0	-69.4	+55.0	-69.4	+55.0	-64.5	+55.0	-56.5	+50.2	-50.2	
	under 29-3/4"	+55.0	-68.3	+55.0	-56.3	+52.1	-52.1	+51.5	-51.5	+51.5	-51.5	+51.5	-51.5	+51.5	-51.5	+50.0	-46.4	-46.4
	29-3/4" thru 36-5/8" ³	+55.0	-68.3	+55.0	-56.3	+52.1	-52.1	+51.5	-51.5	+51.5	-51.5	+51.5	-51.5	+51.5	-51.5	+50.0	-46.4	-46.4
78"	36-9/16" (Equal Lite)	+55.0	-68.3	+55.0	-56.3	+52.1	-52.1	+51.5	-51.5	+51.5	-51.5	+51.5	-51.5	+51.5	-51.5	+50.0	-46.4	-46.4
	over 36-9/16"	+55.0	-68.3	+55.0	-56.3	+52.1	-52.1	+51.5	-51.5	+51.5	-51.5	+51.5	-51.5	+51.5	-51.5	+50.0	-46.4	-46.4
	under 31-3/4"	+55.0	-62.5	+50.8	-50.8	+46.3	-46.3	+45.2	-45.2	+45.0	-45.0	+45.0	-45.0	+45.0	-45.0	+45.0	-45.0	-45.0
78"	31-3/4" thru 39" ³	+55.0	-62.5	+50.8	-50.8	+46.3	-46.3	+45.2	-45.2	+45.0	-45.0	+45.0	-45.0	+45.0	-45.0	+45.0	-45.0	-45.0
	39-1/16" (Equal Lite)	+55.0	-62.5	+50.8	-50.8	+46.3	-46.3	+45.2	-45.2	+45.0	-45.0	+45.0	-45.0	+45.0	-45.0	+45.0	-45.0	-45.0

¹ Tip-to-tip dimensions for flange windows shown. For fin windows or buck dimensions, subtract 1".
² Overall sash height. For clear daylight height, subtract 3-9/16".
³ Size range includes the standard Pro-View (3-over-2 configuration) for the given Window Height.
 For overall sash width, subtract 2-15/16" from the buck dimension.

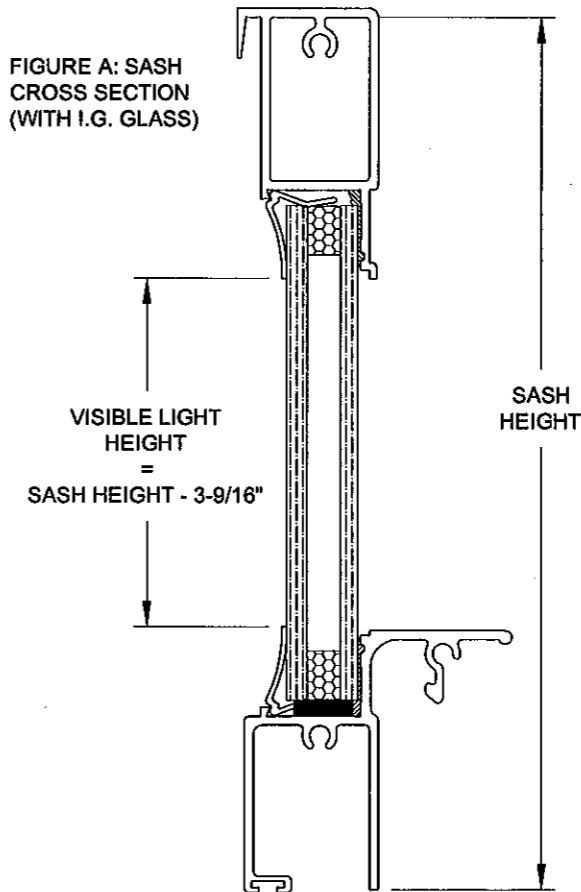
TABLE 2:

Monolithic Glass Types	
A	1/8" Annealed
B	1/8" Tempered
C	3/16" Annealed
D	3/16" Tempered
E	1/4" Annealed
F	1/4" Tempered

TABLE 3:

Insulated Glass Types	
G	1/8" Annealed, 1/4" Airspace, 1/8" Annealed
H	3/16" Annealed, 3/16" Airspace, 1/8" Annealed
I	1/8" Tempered, 1/4" Airspace, 1/8" Tempered
J	3/16" Tempered, 3/16" Airspace, 1/8" Tempered

FIGURE A: SASH CROSS SECTION (WITH I.G. GLASS)



NOTES

- 1) USE THIS TABLE FOR ALL WINDOWS THAT ARE GLAZED WITH GLASS TYPES B - J. NOT APPLICABLE WITH 1/8" ANNEALED GLASS (TYPE A).
- 2) FOR SIZES NOT SHOWN, ROUND UP TO THE NEXT AVAILABLE WIDTH OR HEIGHT DIMENSION SHOWN ON THE TABLE.

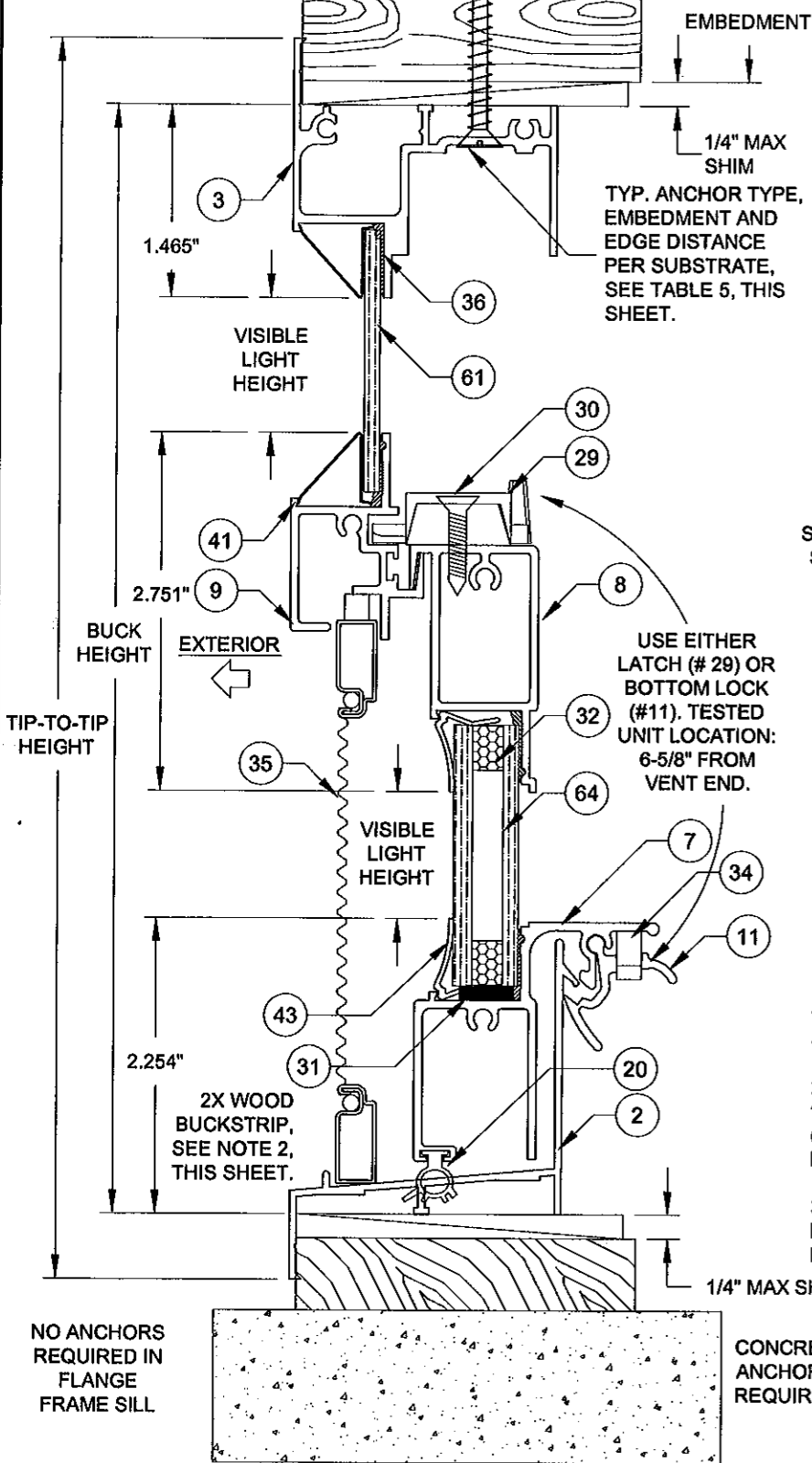
PRODUCT REVISED as complying with the Florida Building Code Acceptance No. 11-1013.12 Expiration Date SEPT. 1, 2016
 By *Marcus P. Miller*
 Miami Dade Product Control

Drawn By: J ROSOWSKI	Drawn Date: 05/11/11	Description: DESIGN PRESSURE B-J	Title: SINGLE HUNG WINDOW INSTALLATION	Series/Model: SH-200	Scale: NTS	Sheet: 3 OF 8	Rev: A
Revised By: JJ	Revised Date: 10/10/11						
Revision: NO CHANGE	Revision:						
Drawn Date: 05/11/11	Revision:						
		1070 TECHNOLOGY DRIVE N. VENICE, FL 34275 P.O. BOX 1529 NOKOMIS, FL 34274		CERT. OF AUTH. #29296			
		A. LYNN MILLER, P.E. P.E.# 58705					

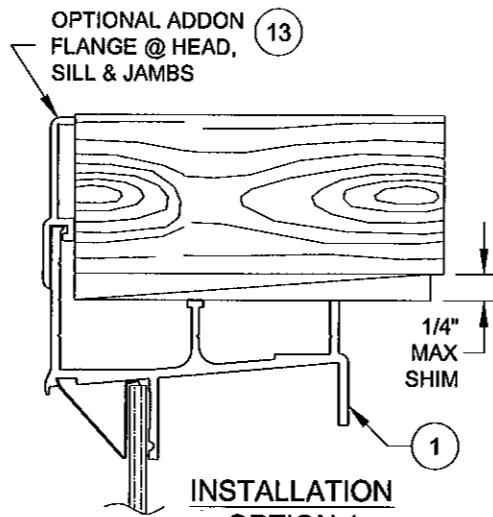
INSTALLATION DETAILS FOR FLANGE FRAMES

INSTALLATION OPTION 1 CURVED HEADER

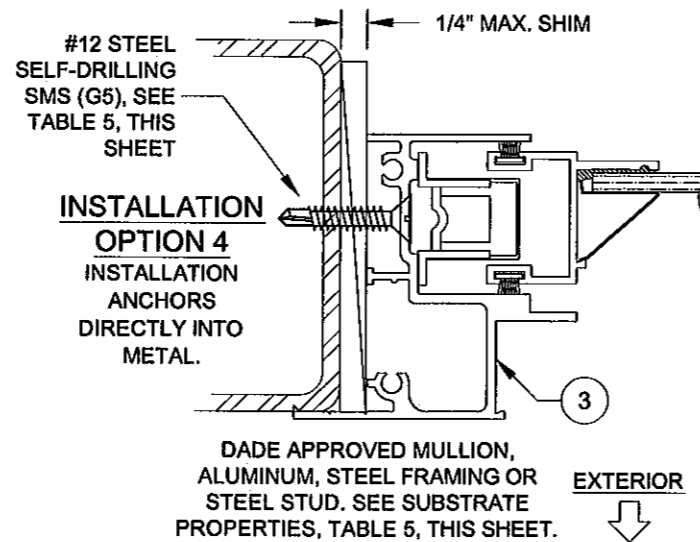
INSTALLATION INTO WOOD 2X, SEE NOTE 2, THIS SHEET.



VERTICAL SECTION B-B

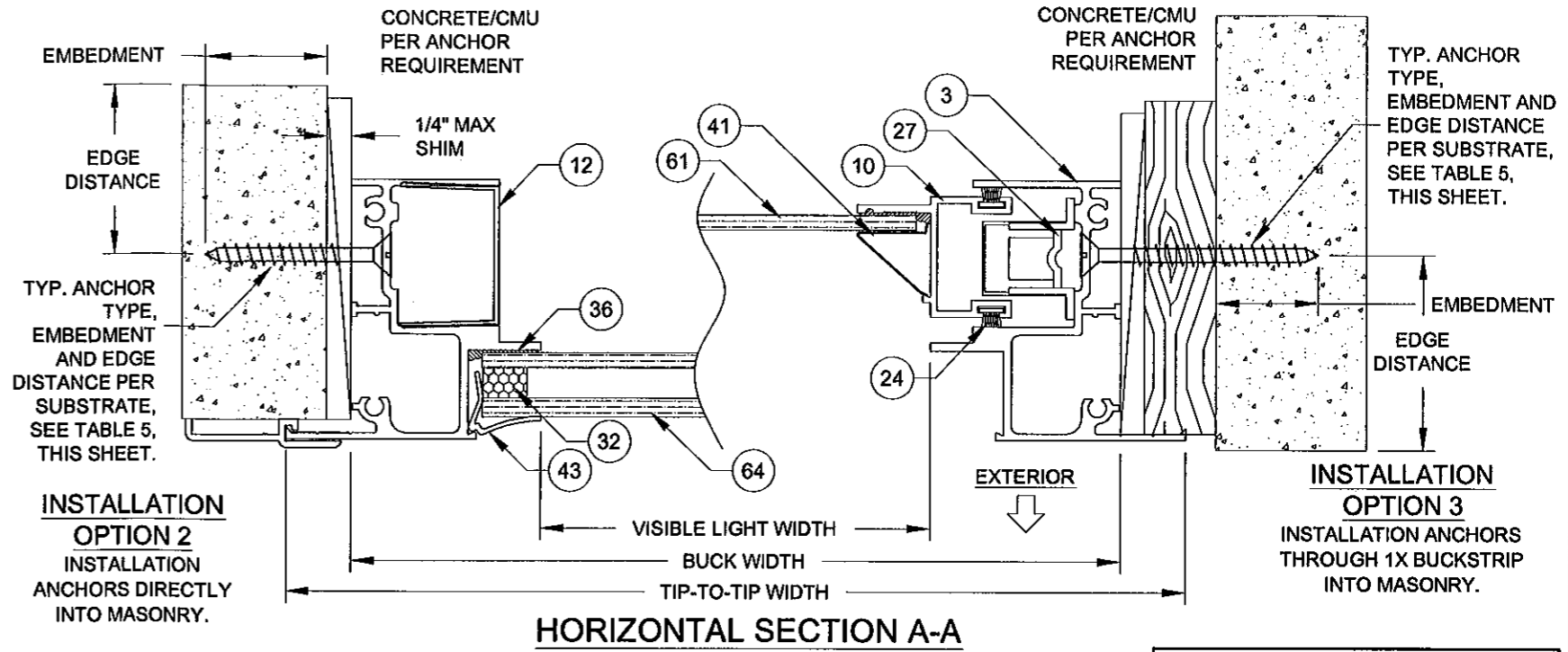


INSTALLATION OPTION 1 STRAIGHT HEADER INSTALLATION ONTO WOOD 2X. NO ANCHORS REQUIRED AT HEADER.



NOTES

- 1) USE ONLY SUBSTRATE-APPROPRIATE ANCHORS LISTED ON TABLE 5 OF THIS SHEET. FOLLOW EMBEDMENT AND EDGE DISTANCE LIMITS. ANY INSTALLATION OPTION SHOWN MAY BE USED ON ANY SIDE OF THE WINDOW.
- 2) MASONRY ANCHORS MAY BE USED INTO WOOD AS PER TABLE 5, THIS SHEET. ALL WOOD BUCKS LESS THAN 1-1/2" THICK ARE TO BE CONSIDERED 1X INSTALLATIONS. 1X WOOD BUCKS ARE OPTIONAL IF UNIT IS INSTALLED DIRECTLY TO SUBSTRATE. WOOD BUCKS DEPICTED AS 2X ARE 1-1/2" THICK OR GREATER. 1X AND 2X BUCKS (WHEN USED) SHALL BE DESIGNED TO PROPERLY TRANSFER LOADS TO THE STRUCTURE. WOOD BUCK DESIGN AND INSTALLATION IS THE RESPONSIBILITY OF THE ENGINEER OR ARCHITECT OF RECORD.
- 3) VISIBLE LIGHT WIDTH OR HEIGHT (ALSO REFERRED TO AS DAYLIGHT OPENING) IS MEASURED FROM BEADING TO BEADING.



HORIZONTAL SECTION A-A

TABLE 5:

Anchor Group	Anchor	Substrate	Min. Edge Distance	Min. Embedment
A	1/4" 410 SS CreteFlex	UngROUTED CMU, (ASTM C-90)	1"	1-1/4"
B	#12 Steel SMS Screw (G5)	P.T. Southern Pine (SG = .55)	9/16"	1-3/8"
		Aluminum, 6063-T5 min.	3/8"	1/8"*
		Steel Stud, Gr. 33 min.	3/8"	0.0346 (20 Ga)*
C	1/4" 410 SS CreteFlex	A36 Steel	3/8"	1/8"*
		P.T. Southern Pine (SG = .55)	1"	1-3/8"
		Concrete (min. 3.35 ksi)	1"	1"
C	1/4" Steel Ultracon	UngROUTED CMU, (ASTM C-90)	1-3/4"	1-1/4"
		P.T. Southern Pine (SG = .55)	1"	1-3/8"
		Concrete (min. 2.7 ksi)	1"	1-3/8"
C	1/4" Steel Ultracon	UngROUTED CMU, (ASTM C-90)	1"	1-1/4"

* MINIMUM OF 3 THREADS BEYOND THE METAL SUBSTRATE.

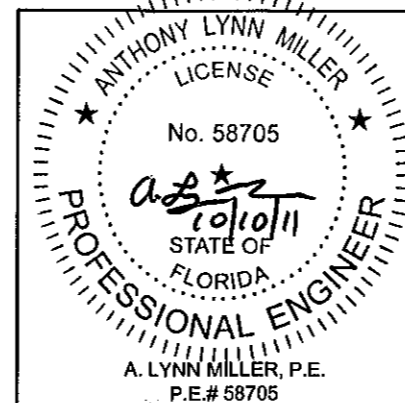
EGRESS FORMULAS (EQUAL-LITE)

WIDTH: TIP-TO-TIP WIDTH - 4"
HEIGHT: TIP-TO-TIP WIDTH/2 - 6-5/16"

VISIBLE LIGHT FORMULAS (EQUAL-LITE)

WIDTH (SASH): TIP-TO-TIP WIDTH - 5-1/16"
WIDTH (FIXED): TIP-TO-TIP WIDTH - 4"
HEIGHT: (TIP-TO-TIP HEIGHT - 7-1/16")/2

PRODUCT REVISED as complying with the Florida Building Code
Acceptance No. 11-1013.12
Expiration Date SEPT. 1, 2016
By *Manuel Perez*
Miami Dade Product Control

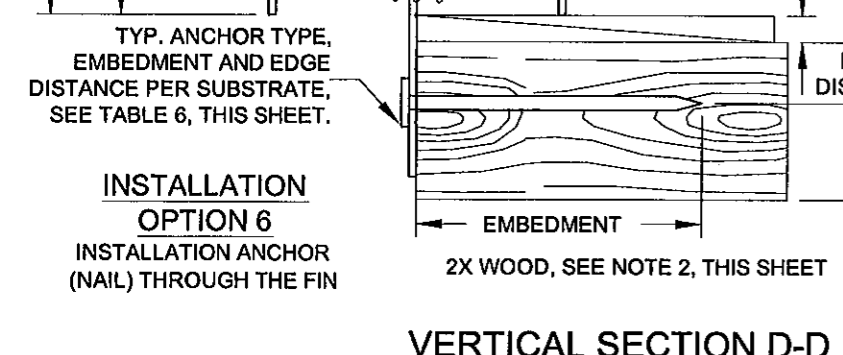
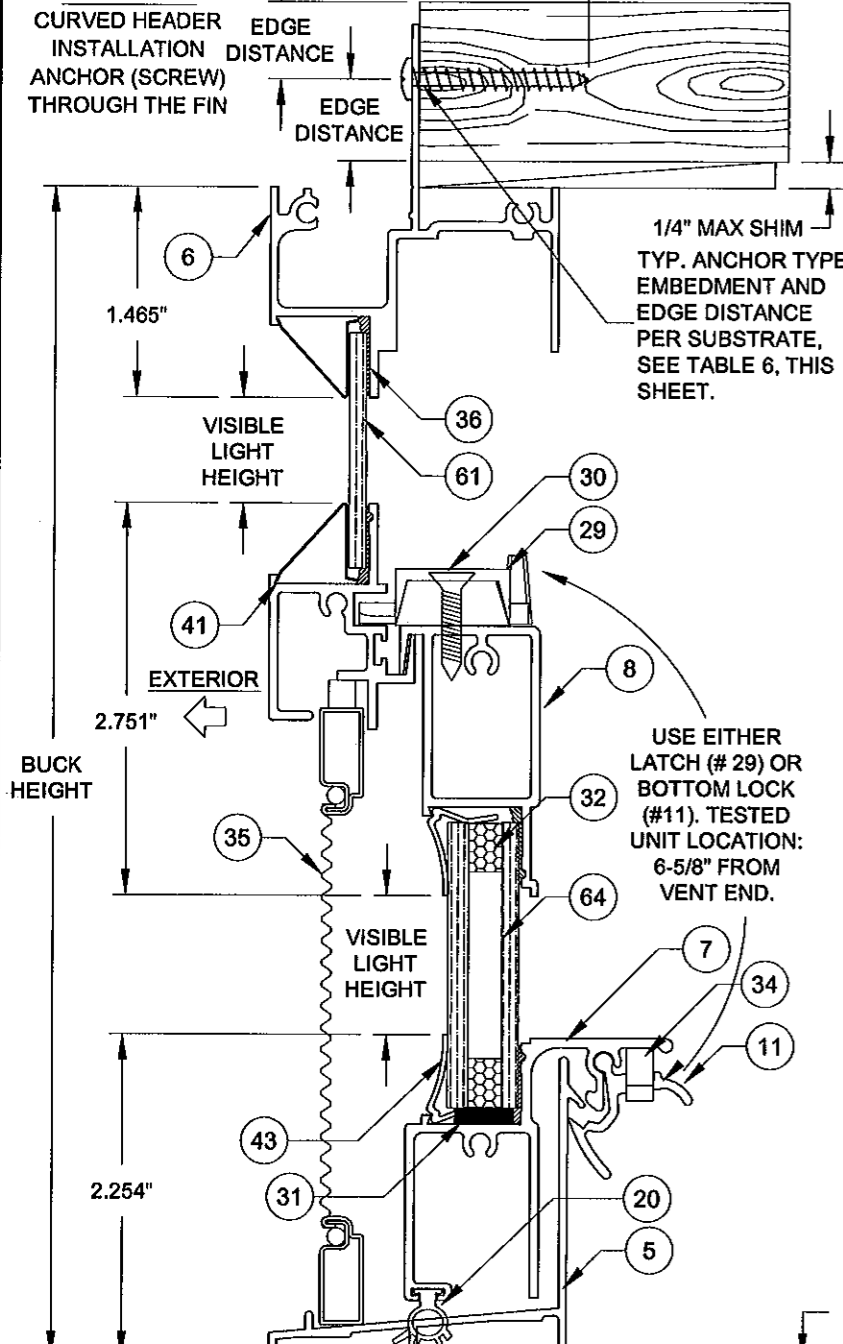


1070 TECHNOLOGY DRIVE
N. VENICE, FL 34275
P.O. BOX 1529
NOKOMIS, FL 34274
CERT. OF AUTH. #29296

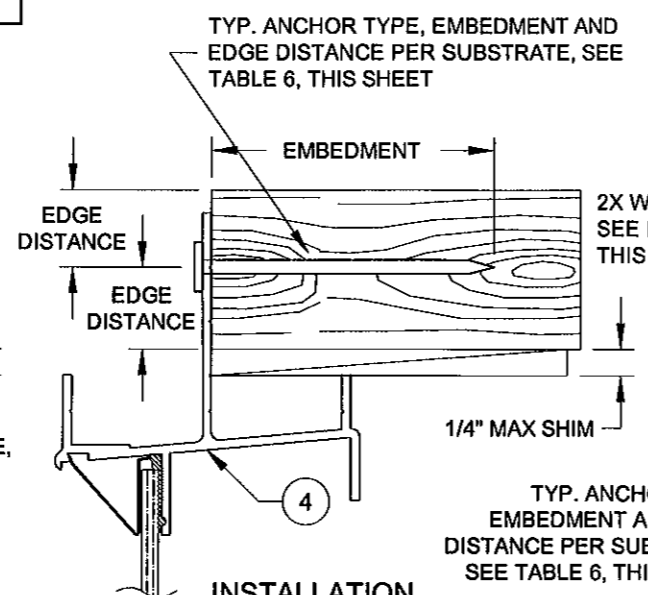
Revised By: JJ	Date: 10/10/11	Revision: NO CHANGE
Revised By:	Date:	Revision:
Description: FLANGE FRAME INSTALLATION DETAILS		Drawn By: J ROSOWSKI
Title: SINGLE HUNG WINDOW INSTALLATION		Date: 05/11/11
Series/Model: SH-200	Scale: NTS	Sheet: 4 OF 8
Drawing No. MD-SH200-01		Rev: A

INSTALLATION DETAILS FOR FIN FRAMES

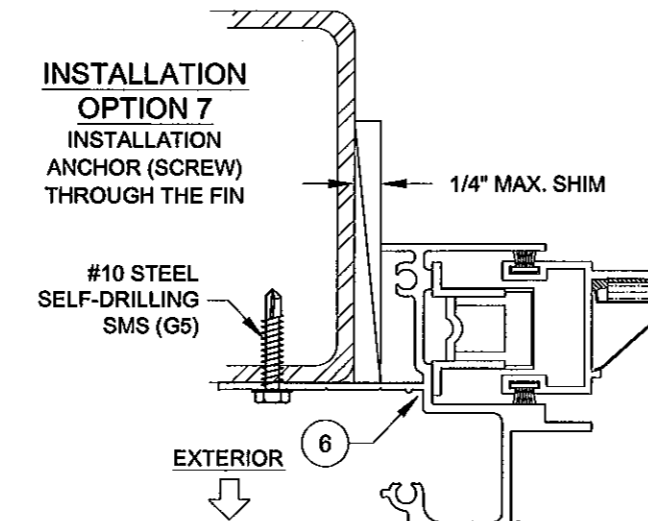
INSTALLATION OPTION 5
CURVED HEADER
INSTALLATION ANCHOR (SCREW)
THROUGH THE FIN



VERTICAL SECTION D-D



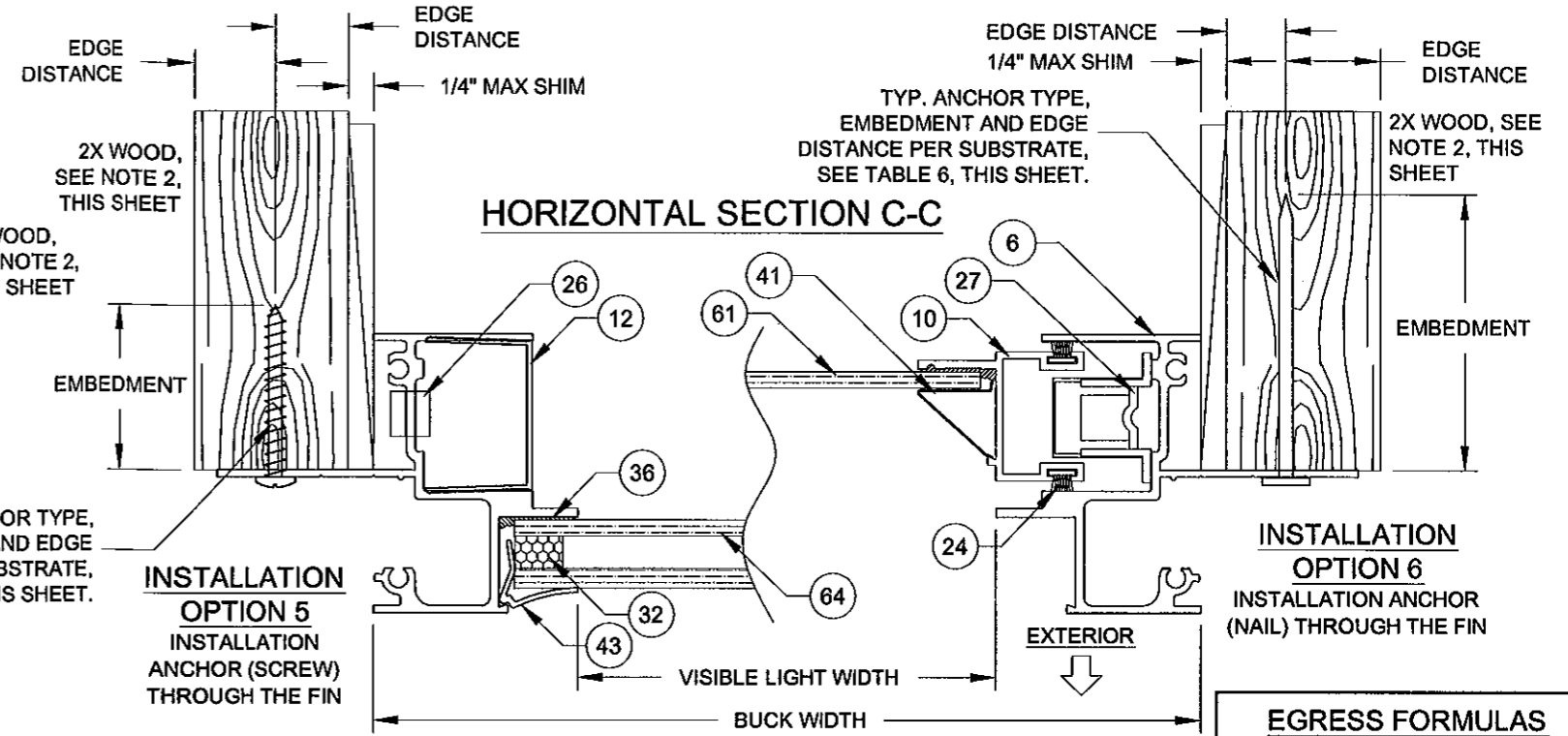
INSTALLATION OPTION E
STRAIGHT HEADER
INSTALLATION ANCHOR (SCREW)
THROUGH THE FIN



INSTALLATION OPTION 7
INSTALLATION ANCHOR (SCREW)
THROUGH THE FIN

ALUMINUM/STEEL FRAMING OR STEEL STUD. SEE SUBSTRATE PROPERTIES, TABLE 6, THIS SHEET.

- NOTES**
- 1) USE ONLY SUBSTRATE APPROPRIATE ANCHORS LISTED ON TABLE 6 OF THIS SHEET. FOLLOW EMBEDMENT AND EDGE DISTANCE LIMITS. ANY INSTALLATION OPTION SHOWN MAY BE USED ON ANY SIDE OF THE WINDOW.
 - 2) 2X WOOD FRAMING OR BUCK, 1-1/2" THICK OR GREATER.
 - 3) VISIBLE LIGHT WIDTH OR HEIGHT (ALSO REFERRED TO AS DAYLIGHT OPENING) IS MEASURED FROM BEADING TO BEADING.



INSTALLATION OPTION 5
INSTALLATION ANCHOR (SCREW)
THROUGH THE FIN

INSTALLATION OPTION 6
INSTALLATION ANCHOR (NAIL)
THROUGH THE FIN

MULLION SECTION

DADE APPROVED MULLION, MAY BE VERTICAL OR HORIZONTAL. MAX. 1/4" SHIM. SEE SUBSTRATE PROPERTIES, TABLE 6, THIS SHEET.

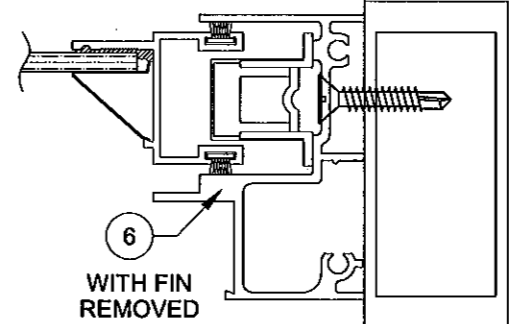
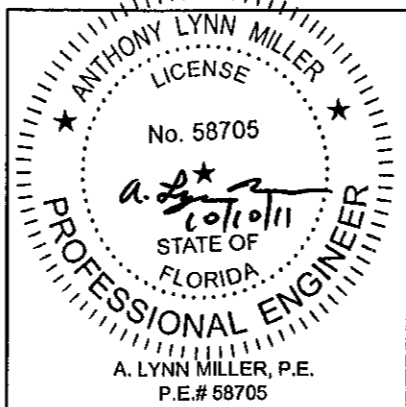


TABLE 6:

Anchor	Substrate	Min. Edge Distance	Min. Embedment
2-1/2" x .113" Box Nail	P.T. Southern Pine (SG = .55)	1/2"	2-7/16"
2-1/2" x .131" Common Nail	P.T. Southern Pine (SG = .55)	9/16"	2-7/16"
2-1/2" x .145" Roofing Nail	P.T. Southern Pine (SG = .55)	9/16"	2-7/16"
#10 Steel SMS Screw (G5)	P.T. Southern Pine (SG = .55)	3/4"	1-3/8"
	Aluminum, 6063-T5 min.	3/8"	1/8"
	Steel Stud, Gr. 33 min.	3/8"	0.036
	A36 Steel	3/8"	1/8"

* MINIMUM OF 3 THREADS BEYOND THE METAL SUBSTRATE.



1070 TECHNOLOGY DRIVE
N. VENICE, FL 34275
P.O. BOX 1529
NOKOMIS, FL 34274

CERT. OF AUTH. #29296

Revised By: JJ	Date: 10/10/11	Revision: NO CHANGE
Revised By:	Date:	Revision:
Description: FIN FRAME INSTALLATION DETAILS		Drawn By: J ROSOWSKI
Title: SINGLE HUNG WINDOW INSTALLATION		Date: 05/11/11
Series/Model: SH-200	Scale: NTS	Sheet: 5 OF 8
Drawing No. MD-SH200-01	Rev: A	

EGRESS FORMULAS (EQUAL-LITE)
WIDTH: BUCK WIDTH - 3"
HEIGHT: BUCK HEIGHT/2 - 5-13/16"

VISIBLE LIGHT FORMULAS (EQUAL-LITE)
WIDTH (SASH): BUCK WIDTH - 4-1/16"
WIDTH (FIXED): BUCK WIDTH - 3"
HEIGHT: (BUCK HEIGHT - 6-1/16") / 2

PRODUCT REVISED as complying with the Florida Building Code Acceptance No 11-1013.12 Expiration Date SEPT. 1, 2016
By *Maureen Jerez*
Miami Dade Product Control

TABLE 7:

		Anchor Quantities Required, Flange Frame																							
Maximum Window Height ¹	Sash Height ² (see Figure A, this sheet)	Maximum Window Width ¹																							
		19-1/8"			26-1/2"			33"			37"			41"			45"			49"			53-1/8"		
		Group A	Group B	Group C	Group A	Group B	Group C	Group A	Group B	Group C	Group A	Group B	Group C	Group A	Group B	Group C	Group A	Group B	Group C	Group A	Group B	Group C	Group A	Group B	Group C
Above MR	Below MR	Above MR	Below MR	Above MR	Below MR	Above MR	Below MR	Above MR	Below MR	Above MR	Below MR	Above MR	Below MR	Above MR	Below MR	Above MR	Below MR	Above MR	Below MR	Above MR	Below MR	Above MR	Below MR	Above MR	Below MR
23"	11-9/16" (Equal Lite)	2	2	2	2	2	2	2	2	2	2	2	2	2	2	2	2	2	2	2	2	2	2	2	2
37"	under 18-9/16"	2	2	2	2	2	2	2	2	2	2	2	2	2	2	2	2	2	2	2	2	2	2	2	2
	18-9/16" (Equal Lite)	2	2	2	2	2	2	2	2	2	2	2	2	2	2	2	2	2	2	2	2	2	2	2	2
	over 18-9/16"	2	2	2	2	2	2	2	2	2	2	2	2	2	2	2	2	2	2	2	2	2	2	2	2
38-3/8"	under 15-7/8"	2	2	2	2	2	2	2	2	2	2	2	2	2	2	2	2	2	2	2	2	2	2	2	2
	15-7/8" thru 19-3/16" ³	2	2	2	2	2	2	2	2	2	2	2	2	2	2	2	2	2	2	2	2	2	2	2	2
	19-1/4" (Equal Lite)	2	2	2	2	2	2	2	2	2	2	2	2	2	2	2	2	2	2	2	2	2	2	2	2
45"	under 19-9/16"	2	2	2	2	2	2	2	2	2	2	2	2	2	2	2	2	2	2	2	2	2	2	2	2
	19-9/16" thru 22-5/8" ³	2	2	2	2	2	2	2	2	2	2	2	2	2	2	2	2	2	2	2	2	2	2	2	2
	22-9/16" (Equal Lite)	2	2	2	2	2	2	2	2	2	2	2	2	2	2	2	2	2	2	2	2	2	2	2	2
49"	under 20-1/8"	2	2	2	2	2	2	2	2	2	2	2	2	2	2	2	2	2	2	2	2	2	2	2	2
	20-1/8" thru 24-1/2" ³	2	2	2	2	2	2	2	2	2	2	2	2	2	2	2	2	2	2	2	2	2	2	2	2
	24-9/16" (Equal Lite)	2	2	2	2	2	2	2	2	2	2	2	2	2	2	2	2	2	2	2	2	2	2	2	2
50-5/8"	under 20-13/16"	3	2	2	2	2	2	2	2	2	2	2	2	2	2	2	2	2	2	2	2	2	2	2	2
	20-13/16" thru 24-11/16" ³	2	2	2	2	2	2	2	2	2	2	2	2	2	2	2	2	2	2	2	2	2	2	2	2
	24-3/4" (Equal Lite)	2	2	2	2	2	2	2	2	2	2	2	2	2	2	2	2	2	2	2	2	2	2	2	2
61"	under 24-15/16"	3	3	3	3	3	3	3	3	3	3	3	3	3	3	3	3	3	3	3	3	3	3	3	3
	24-15/16" thru 30-5/8" ³	2	2	2	2	2	2	2	2	2	2	2	2	2	2	2	2	2	2	2	2	2	2	2	2
	30-9/16" (Equal Lite)	2	2	2	2	2	2	2	2	2	2	2	2	2	2	2	2	2	2	2	2	2	2	2	2
63"	under 25-3/4"	3	2	3	2	3	2	4	2	3	2	3	2	4	2	3	2	4	2	3	2	5	2	4	2
	25-3/4" thru 31-5/8" ³	2	2	2	2	2	2	2	2	2	2	2	2	2	2	2	2	2	2	2	2	2	2	2	2
	31-9/16" (Equal Lite)	2	2	2	2	2	2	2	2	2	2	2	2	2	2	2	2	2	2	2	2	2	2	2	2
73"	under 29-3/4"	3	2	3	2	3	2	3	2	3	2	3	2	3	2	3	2	3	2	3	2	3	2	3	2
	29-3/4" thru 36-5/8" ³	3	2	3	2	3	2	3	2	3	2	3	2	3	2	3	2	3	2	3	2	3	2	3	2
	36-9/16" (Equal Lite)	2	2	2	2	2	2	2	2	2	2	2	2	2	2	2	2	2	2	2	2	2	2	2	2
78"	under 31-3/4"	3	2	3	2	3	2	3	2	3	2	3	2	3	2	3	2	3	2	3	2	3	2	3	2
	31-3/4" thru 39" ³	3	2	3	2	3	2	3	2	3	2	3	2	3	2	3	2	3	2	3	2	3	2	3	2
	39-1/16" (Equal Lite)	2	2	2	2	2	2	2	2	2	2	2	2	2	2	2	2	2	2	2	2	2	2	2	2

¹ Tip-to-tip dimensions for flange windows shown. For buck dimensions, subtract 1".
² Overall sash height. For clear daylight height, subtract 3-9/16".
³ Size range includes the standard Pro-View (3-over-2 configuration) for the given Window Height. "MR" refers to "Meeting Rail".
 For overall sash width, subtract 2-15/16" from the buck dimension.

- NOTES**
- 1) USE THIS TABLE FOR ALL FLANGED WINDOWS PER THE ELEVATION ON SHEET 1. DIMENSIONS SHOWN ARE TIP-TO-TIP.
 - 2) FOR FIN FRAMED WINDOWS, SEE NAIL PATTERN ON SHEET 1.
 - 3) FOR SIZES NOT SHOWN, ROUND UP TO THE NEXT AVAILABLE WIDTH OR HEIGHT DIMENSION SHOWN ON THE TABLE.
 - 4) REFER TO TABLE 5, SHEET 4 FOR ANCHOR GROUP DESCRIPTIONS.

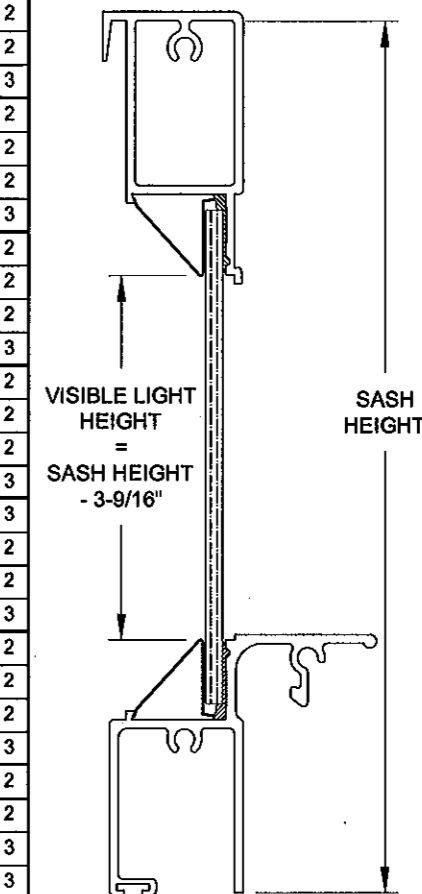
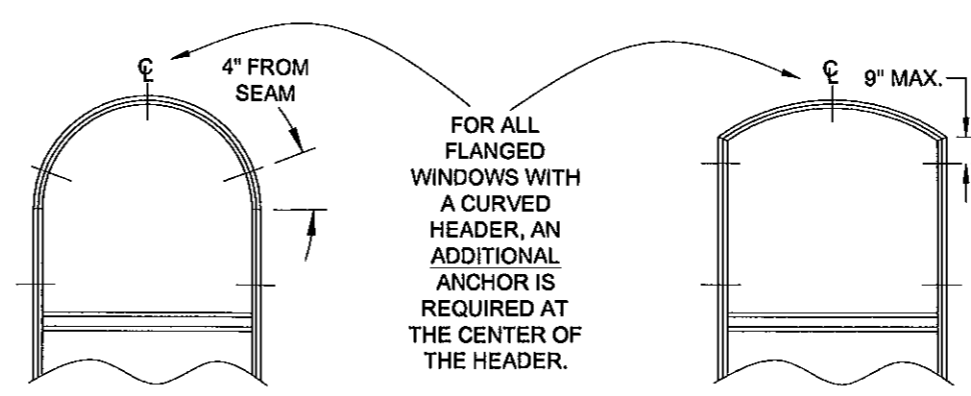


FIGURE A: SASH CROSS SECTION (WITH MONOLITHIC GLASS)

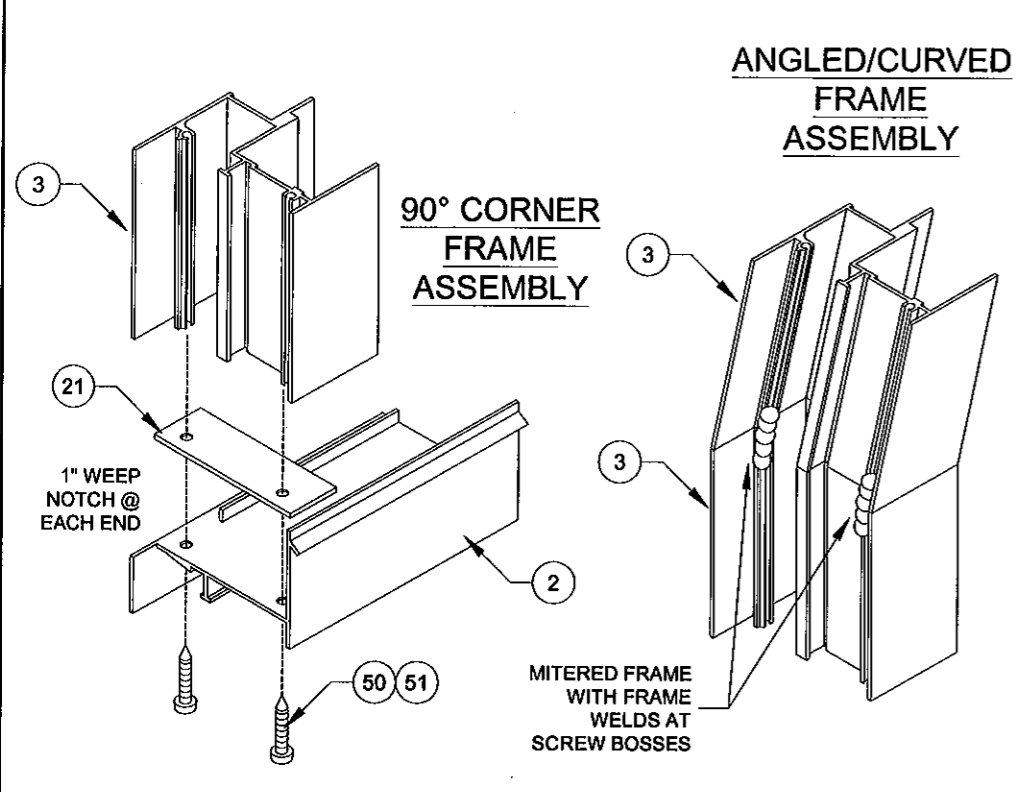
PRODUCT REVISED as complying with the Florida Building Code
 Acceptance No. 11-1013.12
 Expiration Date SEPT. 1, 2016
 By *Manuel Perez*
 Miami Dade Product Control

Drawn By: J ROSOWSKI	Drawn Date: 05/11/11
Revised By: NO CHANGE	Revised Date:
Revised By: JJ	Revised Date: 10/10/11
Description: ANCHOR SPACING	
Title: SINGLE HUNG WINDOW INSTALLATION	Sheet: 6 OF 8
Scale: NTS	Drawing No.: MD-SH200-01
Series/Model: SH-200	Rev: A

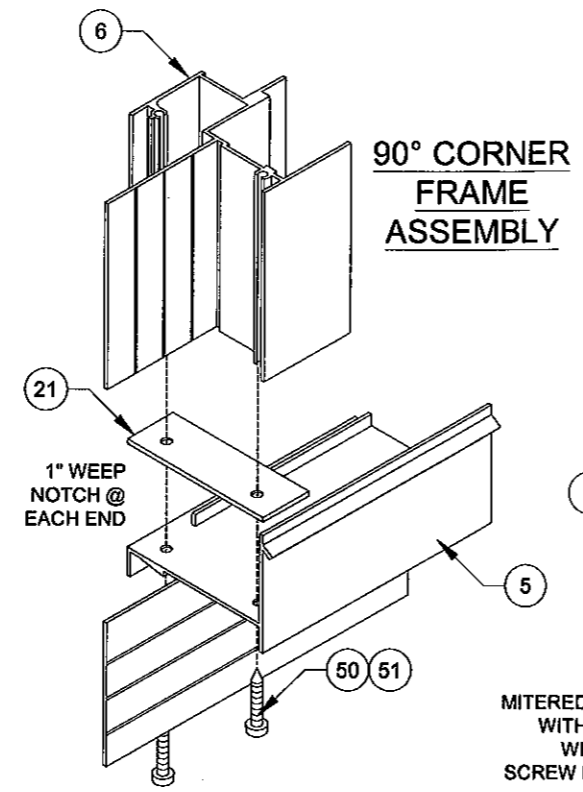
1070 TECHNOLOGY DRIVE
 N. VENICE, FL 34275
 P.O. BOX 1529
 NOKOMIS, FL 34274
 CERT. OF AUTH. #29296

ANTHONY LYNN MILLER
 LICENSE NO. 58705
 STATE OF FLORIDA
 PROFESSIONAL ENGINEER
 A. LYNN MILLER, P.E.
 P.E.# 58705

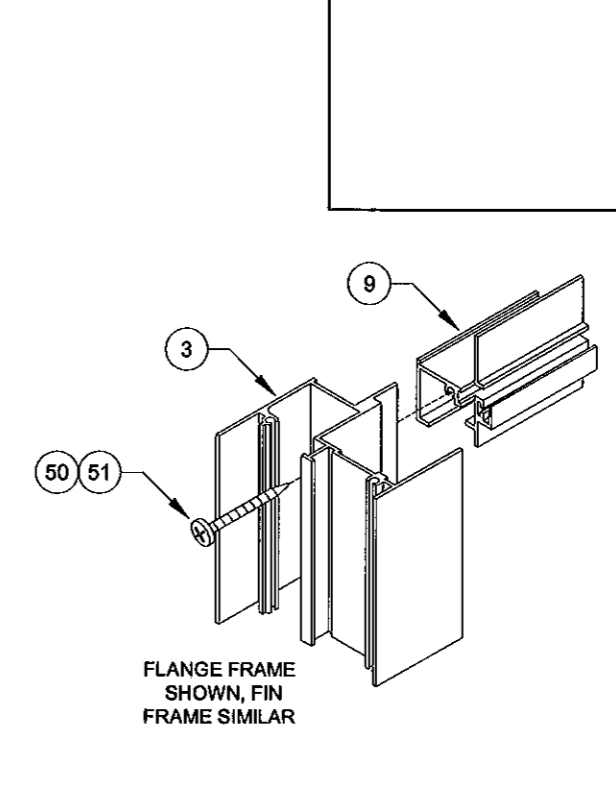
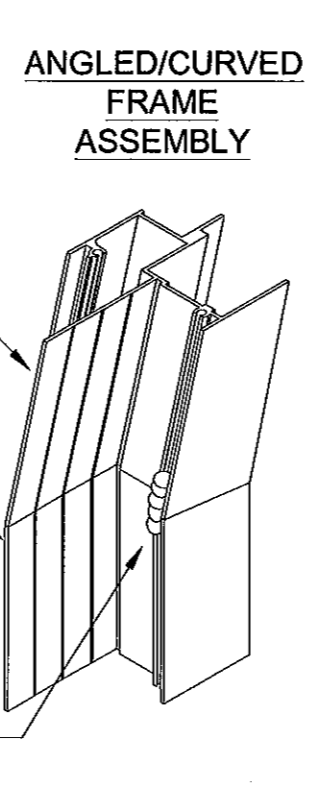
PRODUCT REVISED
 as complying with the Florida
 Building Code
 Acceptance No. 11-1013.17
 Expiration Date SEPT. 1, 2016
 By *Manuel Perez*
 Miami Dade Product Control



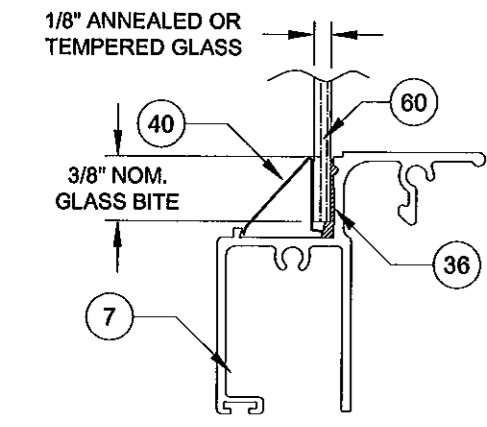
ASSEMBLY DETAILS FOR
 FLANGE FRAME CORNERS



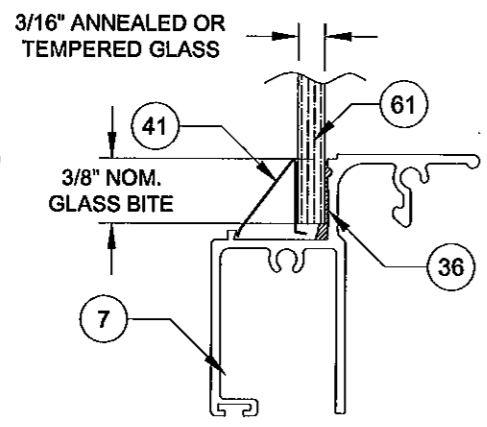
ASSEMBLY DETAILS FOR
 FIN FRAME CORNERS



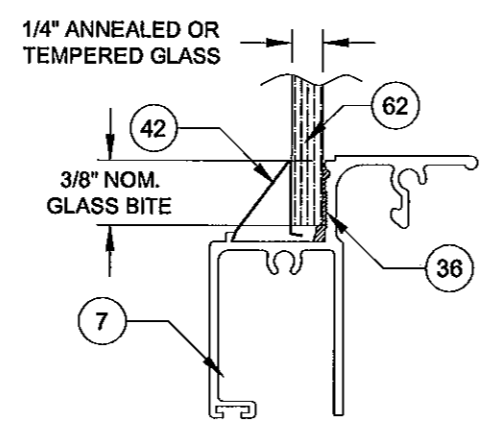
ASSEMBLY DETAILS FOR
 FRAME TO MEETING RAIL



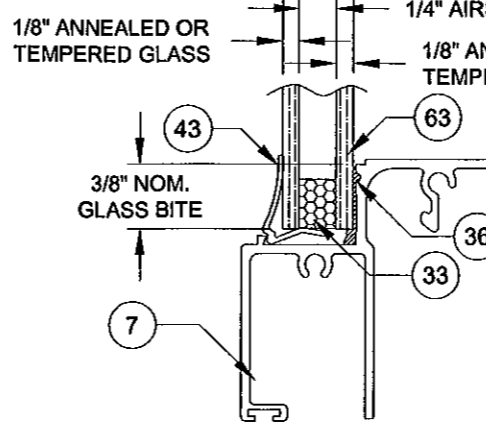
1/8" GLAZING DETAIL
 GLASS TYPES A & B



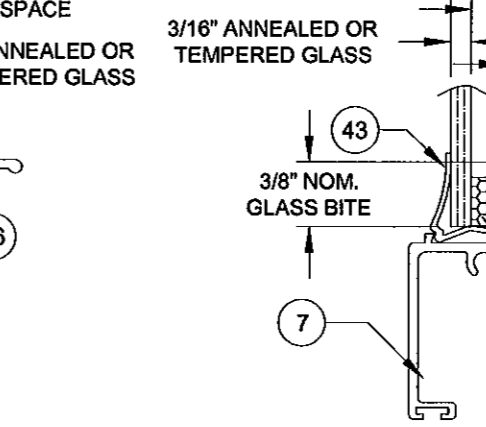
3/16" GLAZING DETAIL
 GLASS TYPES C & D



1/4" GLAZING DETAIL
 GLASS TYPES E & F

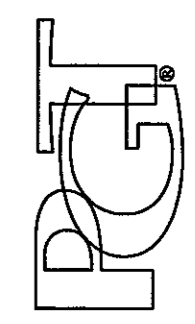


1/2" I.G. GLAZING DETAIL
 GLASS TYPES G & I

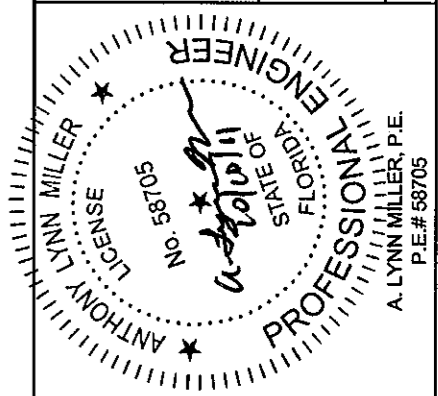


1/2" I.G. GLAZING DETAIL
 GLASS TYPES H & J

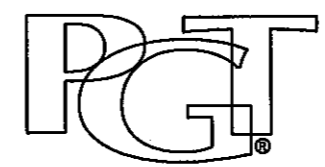
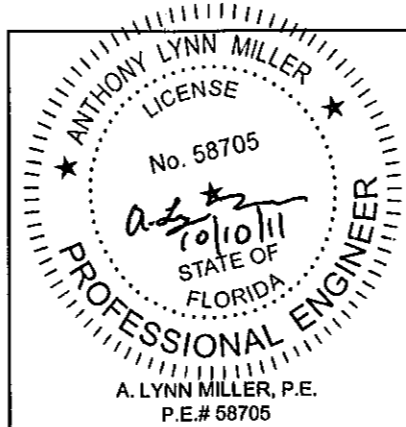
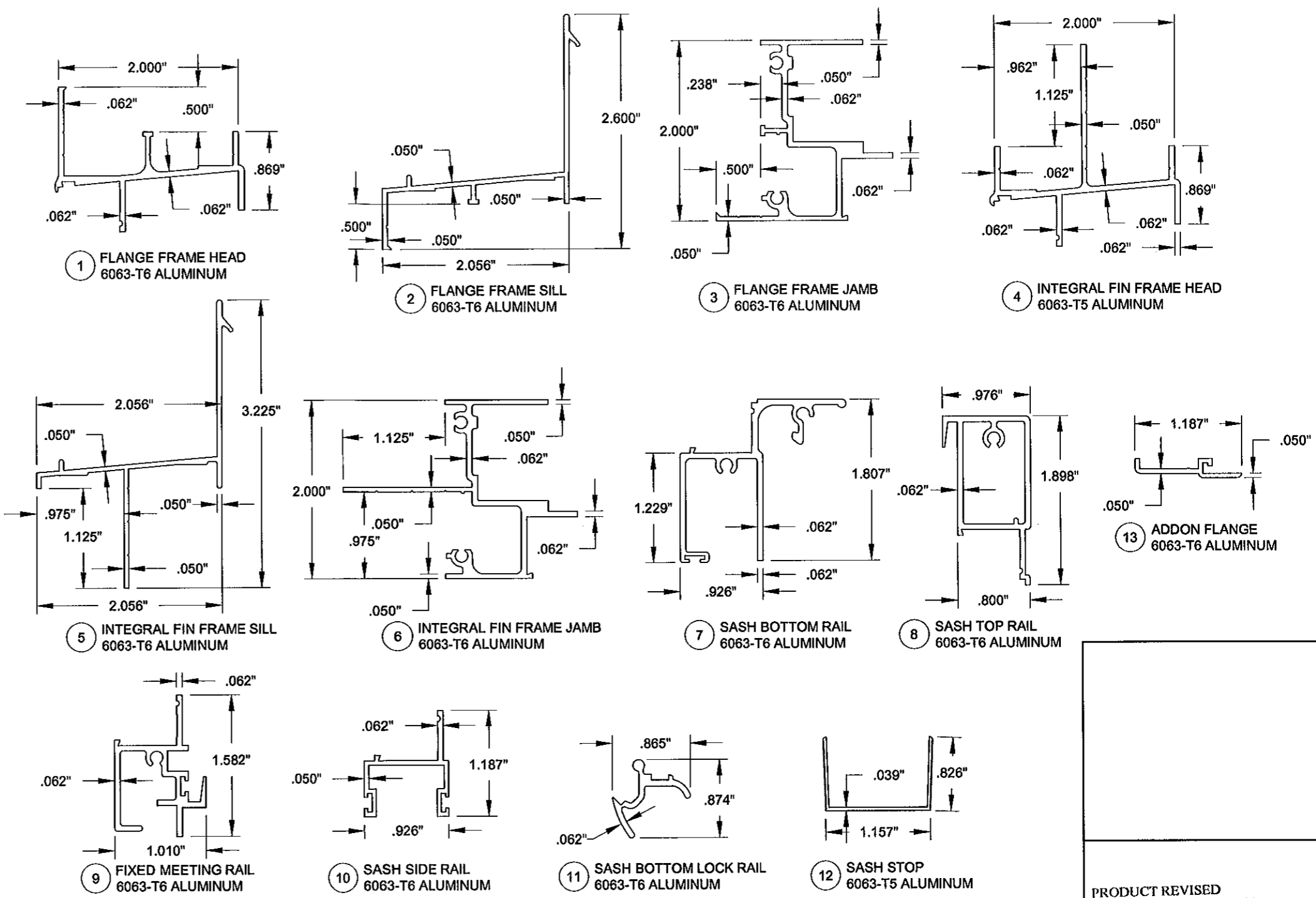
Revised By: JJ	Date: 10/10/11	Revised By: J ROSOWSKI	Date: 05/11/11
Revised By:	Date:	Revised By:	Date:
Description: CORNER ASSEMBLY & GLASS DETAILS		Revision: NO CHANGE	
Title: SINGLE HUNG WINDOW INSTALLATION		Revision: 05/11/11	
Series/Model: SH-200	Scale: NTS	Sheet: 7 OF 8	Rev: A
Drawing No. MD-SH200-01		Drawing No. MD-SH200-01	



1070 TECHNOLOGY DRIVE
 N. VENICE, FL 34275
 P.O. BOX 1529
 NOKOMIS, FL 34274
 CERT. OF AUTH. #29296



Item #	PGT Dwg. #	PGT Part #	Description
1	2703E	62703EW	Flange Frame Head
2	2751B	62751BW	Flange Frame Sill
3	2781	62781W	Flange Frame Jamb
4	2713	62713BW	Integral Fin Frame Head
5	2714E	62714EW	Integral Fin Frame Sill
6	2782	62782W	Integral Fin Frame Jamb
7	2706	62706DW	Sash Bottom Rail
8	2707	62707CW	Sash Top Rail
9	2739	62739W	Fixed Meeting Rail
10	2709	62709CW	Sash Side Rail
11	2740B	742740AW	Sash Bottom Lock
12	2785	62785W	Sash Stop
13	134	66615	Addon Flange
20	1226	61226DW	Vinyl Bulb, Flex PVC 70
21	1662C	71662CW	Head/Sill Gasket, Polyethelyne
22	1270	7PAD118	Open Cell Foam Pad
23	2772	72772SHK	Fixed Meeting Rail Plug Gasket, Rigid PVC
24	4066	64066G	Wstp., 187 X .230 Fin Seal
25	2784	72784W	Sash Side Rail Gasket, Polyethelyne
26	1078	7121UM	Balance Take-out Clip
27	Varies per Size		Balance
28	2711	42800W	Sash Cam, Nylon
29	1096	71096W	Sweep Latch, Zinc
30	1016	7858WW	#8 X .625 Ph. Fl. SMS Latch Screws
31	1267	71267N	Setting Block 1/8" x 1/2" x 1", EPDM
32		6DURAK316	Duraseal - 3/16"
33		6DURAK14	Duraseal - 1/4"
34			Sash Bottom Lock Spring
35			Screen Cloth, Fiberglass
36			Dow Corning 899 Silicone Glazing Sealant
40	1625	61625B	Glass Bead (1/8" Glass)
41	2719	62719B	Glass Bead (3/16" Glass)
42	1263	61263B	Glass Bead (1/4" Glass)
43	1253	6VT48B	Glass Bead (I.G.)
50		781PQA	#8 X 1" QUAD Pn SMS
51		781PSTX	#8 X 1" Sq. Pn Twin Fast SMS - 410 S.S.
52	1184	781LHPQA	#8-15 x 1 LH Twinfast Screw Zinc
53	1186	781LHPQX	#8-15 x 1 LH Twinfast Screw Zinc (S.S.)
54		78X1PFTFUA	#8 X 1" Ph Fl u/cut SMS
55		78X1FPAX	#8 X 1" Ph Fl - Stainless Steel
60			1/8" Annealed or Tempered Glass
61			3/16" Annealed or Tempered Glass
62			1/4" Annealed or Tempered Glass
63			1/8" - 1/4" Air - 1/8" An. or Temp. I.G.
64			1/8" - 3/16" Air - 3/16" An. or Temp. I.G.



1070 TECHNOLOGY DRIVE
N. VENICE, FL 34275
P.O. BOX 1529
NOKOMIS, FL 34274

CERT. OF AUTH. #29296

Revised By:	Date:	Revision:
JJ	10/10/11	NO CHANGE
Revised By:	Date:	Revision:
Description:		Drawn By:
BOM & PART DETAILS		J ROSOWSKI
Title:		Date:
SINGLE HUNG WINDOW INSTALLATION		05/11/11
Series/Model:	Scale:	Sheet:
SH-200	NTS	8 OF 8
Drawing No.		Rev:
MD-SH200-01		A

PRODUCT REVISED
as complying with the Florida
Building Code
Acceptance No. 11-1013.12
Expiration Date Sept. 1, 2016
By *Manuel...*
Miami/Dade Product Control