

REVISIONS			
REV	DESCRIPTION	DATE	APPROVED

Maximum design pressure capacity chart (psf)

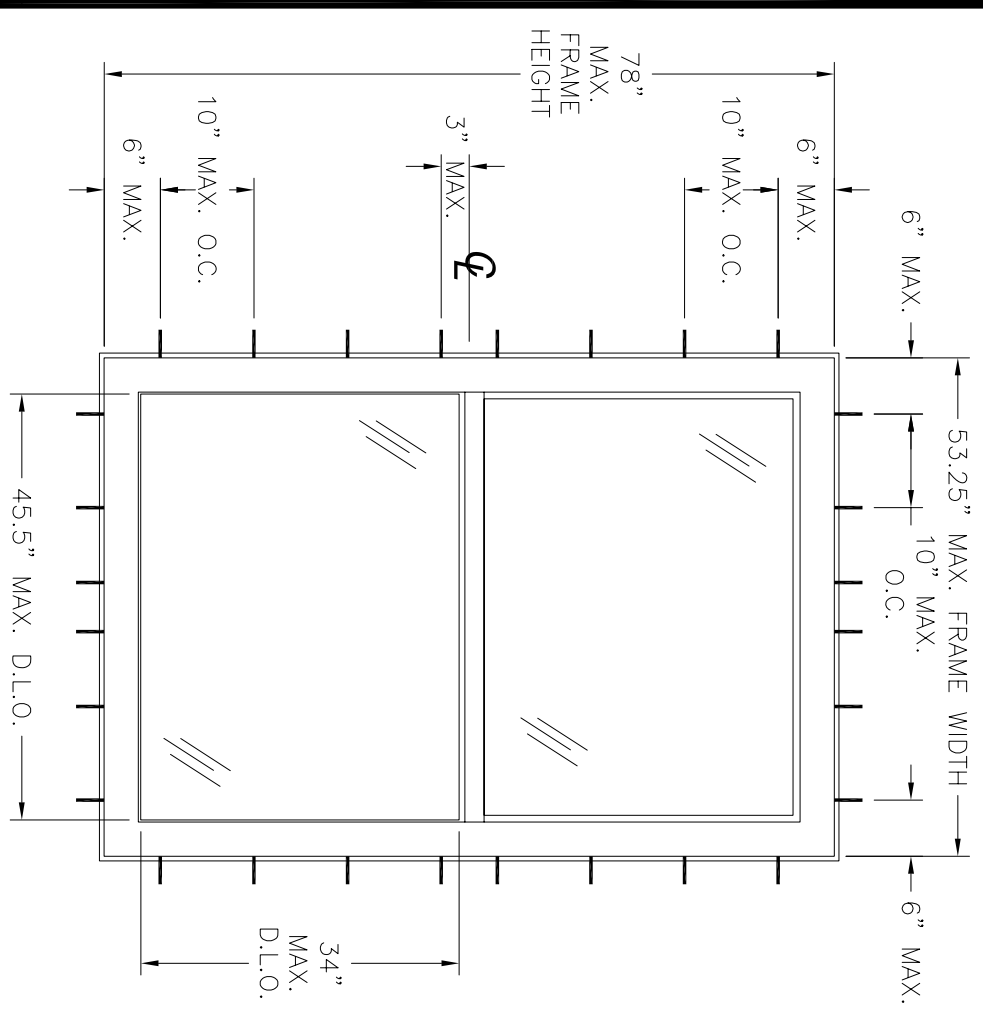
Unit width (in)

Height (in)	18.00		24.00		30.00		36.00		42.00		48.00		53.25	
	Pos	Neg	Pos	Neg	Pos	Neg	Pos	Neg	Pos	Neg	Pos	Neg	Pos	Neg
24.0	65.0	120.0	65.0	120.0	65.0	120.0	65.0	120.0	65.0	120.0	65.0	120.0	65.0	120.0
30.0	65.0	120.0	65.0	120.0	65.0	120.0	65.0	120.0	65.0	120.0	65.0	120.0	65.0	120.0
36.0	65.0	120.0	65.0	120.0	65.0	120.0	65.0	120.0	65.0	120.0	65.0	120.0	65.0	120.0
42.0	65.0	120.0	65.0	120.0	65.0	120.0	65.0	120.0	65.0	120.0	65.0	120.0	65.0	117.3
48.0	65.0	120.0	65.0	120.0	65.0	120.0	65.0	120.0	65.0	120.0	65.0	120.0	65.0	106.4
54.0	65.0	120.0	65.0	120.0	65.0	120.0	65.0	120.0	65.0	120.0	65.0	113.0	65.0	98.1
60.0	65.0	120.0	65.0	120.0	65.0	120.0	65.0	120.0	65.0	120.0	65.0	106.4	65.0	91.8
66.0	65.0	120.0	65.0	120.0	65.0	120.0	65.0	120.0	65.0	120.0	65.0	101.3	65.0	86.8
72.0	65.0	120.0	65.0	120.0	65.0	120.0	65.0	120.0	65.0	120.0	65.0	97.5	65.0	83.0
78.0	65.0	120.0	65.0	120.0	65.0	120.0	65.0	120.0	65.0	120.0	65.0	94.7	65.0	80.0

Number of anchors required, based on design pressure and tested spacing.
Units anchored using #8 wood screw or 3/16" Eico Tapcon or #10 TEK Screw

Height (in)	Unit width (in)													
	18.0	24.0	30.0	36.0	42.0	48.0	53.25	18.0	24.0	30.0	36.0	42.0	48.0	53.25
24.0	2	3	3	3	3	3	3	2	3	3	3	3	3	3
30.0	2	3	3	3	3	3	3	2	3	3	3	3	3	3
36.0	2	4	3	4	3	4	4	2	4	3	4	4	4	4
42.0	2	4	3	4	3	4	4	2	4	4	4	4	4	4
48.0	2	5	3	5	3	5	4	2	5	4	5	5	5	5
54.0	2	6	3	6	3	6	4	2	6	4	6	6	6	6
60.0	2	6	3	6	3	6	4	2	6	4	6	6	6	6
66.0	2	7	3	7	3	7	4	2	7	4	7	7	7	7
72.0	2	7	3	7	3	7	4	2	7	4	7	7	7	7
78.0	2	8	3	8	3	8	4	2	8	4	8	8	8	8

- NOTES:
- 1) THE PRODUCT SHOWN HEREIN IS DESIGNED AND MANUFACTURED TO COMPLY WITH THE CURRENT FLORIDA BUILDING CODE INCLUDING THE HVHZ
 - 2) WOOD FRAMING AND MASONRY OPENING TO BE DESIGNED AND ANCHORED TO PROPERLY TRANSFER ALL LOADS TO STRUCTURE. FRAMING AND MASONRY OPENING IS THE RESPONSIBILITY OF THE ARCHITECT OR ENGINEER OF RECORD.
 - 3) CONTRACTOR IS RESPONSIBLE FOR MAINTAINING STRUCTURAL INTEGRITY OF WINDOW OPENING AND ALL WOOD FRAMING AROUND WINDOW.
 - 4) UNITS MUST BE GLAZED PER ASTM E1300 SEE SHEET 5 FOR APPROVED GLASS.
 - 5) APPROVED IMPACT PROTECTIVE SYSTEM IS NOT REQUIRED FOR THIS PRODUCT IN WIND-BORNE DEBRIS REGIONS.
 - 6) SHIM AS REQUIRED AT EACH INSTALLATION ANCHOR WITH LOAD BEARING SHIM. SHIM WHERE SPACE OF 1/16" OR GREATER OCCURS. MAXIMUM ALLOWABLE SHIM STACK TO BE 1/4".
 - 7) FOR INSTALLATION INTO WOOD FRAMING OR 2X BUCK USE #10 WOOD SCREW WITH SUFFICIENT LENGTH TO ACHIEVE A 1 3/8" MINIMUM EMBEDMENT INTO SUBSTRATE. LOCATE ANCHORS AS SHOWN IN ELEVATIONS AND INSTALLATION DETAILS.
 - 8) FOR INSTALLATION INTO CONCRETE/MASONRY USE 3/16" ITW TAPCON WITH SUFFICIENT LENGTH TO ACHIEVE A 1 1/4" MINIMUM EMBEDMENT INTO SUBSTRATE. LOCATE ANCHORS AS SHOWN IN ELEVATIONS AND INSTALLATION DETAILS.
 - 9) FOR ANCHORING INTO METAL FRAMING USE #10 TEK SELF TAPPING SCREWS WITH SUFFICIENT LENGTH TO ACHIEVE A MINIMUM EMBEDMENT OF THREE THREADS PAST THE FRAME THICKNESS. LOCATE ANCHORS AS SHOWN IN ELEVATIONS AND INSTALLATION DETAILS.
 - 10) ALL FASTENERS TO BE CORROSION RESISTANT.
 - 11) INSTALLATION ANCHORS SHALL BE INSTALLED IN ACCORDANCE WITH ANCHOR MANUFACTURER'S INSTALLATION INSTRUCTIONS, AND ANCHORS SHALL NOT BE USED IN SUBSTRATES WITH STRENGTHS LESS THAN THE MINIMUM STRENGTH SPECIFIED BELOW:
 - A. WOOD – MINIMUM SPECIFIC GRAVITY OF G=0.42
 - B. CONCRETE – MINIMUM COMPRESSIVE STRENGTH OF 3,200 PSI.
 - C. MASONRY – STRENGTH CONFORMANCE TO ASTM C-90, GRADE N, TYPE 1 (OR GREATER).
 - D. METAL FRAMING – 16GA (.060) MINIMUM THICKNESS
 - 12) ALLOWABLE STRESS INCREASE OF 1/3 WAS NOT USED IN THE DESIGN OF THE PRODUCT SHOWN HEREIN. WIND LOAD DURATION FACTOR Cd=1.6 WAS USED FOR WOOD ANCHOR CALCULATIONS.
 - 13) FRAME AND SASH MATERIAL: RIGID PVC



DESIGN PRESSURE RATING	IMPACT RATING
+ 65.0 PSF - 80.0 PSF	LARGE AND SMALL MISSILE IMPACT

DH2760 AND DH2860 WINDOW
EXTERIOR VIEW

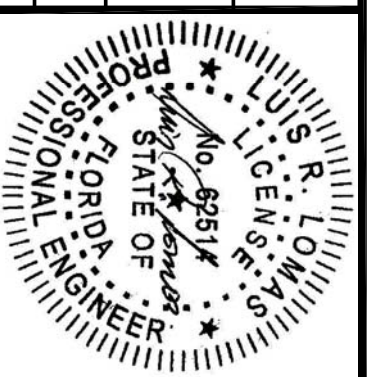
TABLE OF CONTENTS

SHEET NO.	DESCRIPTION
1	ELEVATION AND GENERAL NOTES
2 - 4	INSTALLATION DETAILS
5	COMPONENTS AND GLAZING DETAILS

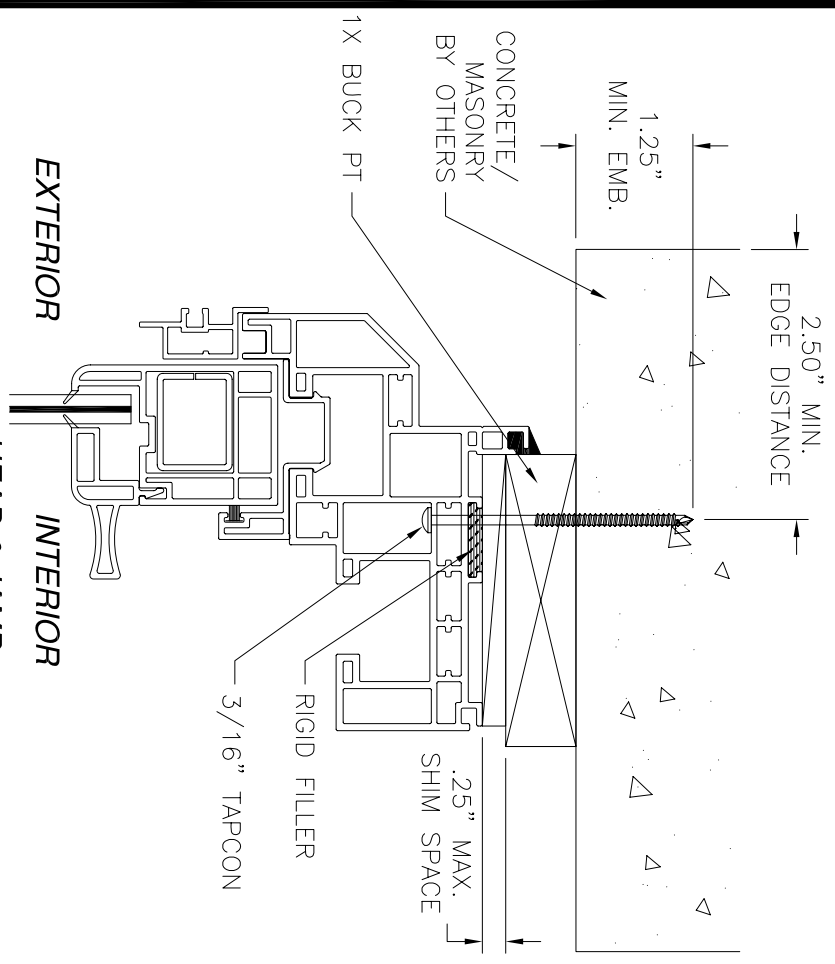
PGT INDUSTRIES
1070 TECHNOLOGY DRIVE
NOKOMIS, FL 34275

DH2760 PVC DOUBLE HUNG WINDOW
DH2860 PVC DOUBLE HUNG WINDOW
ELEVATION AND NOTES

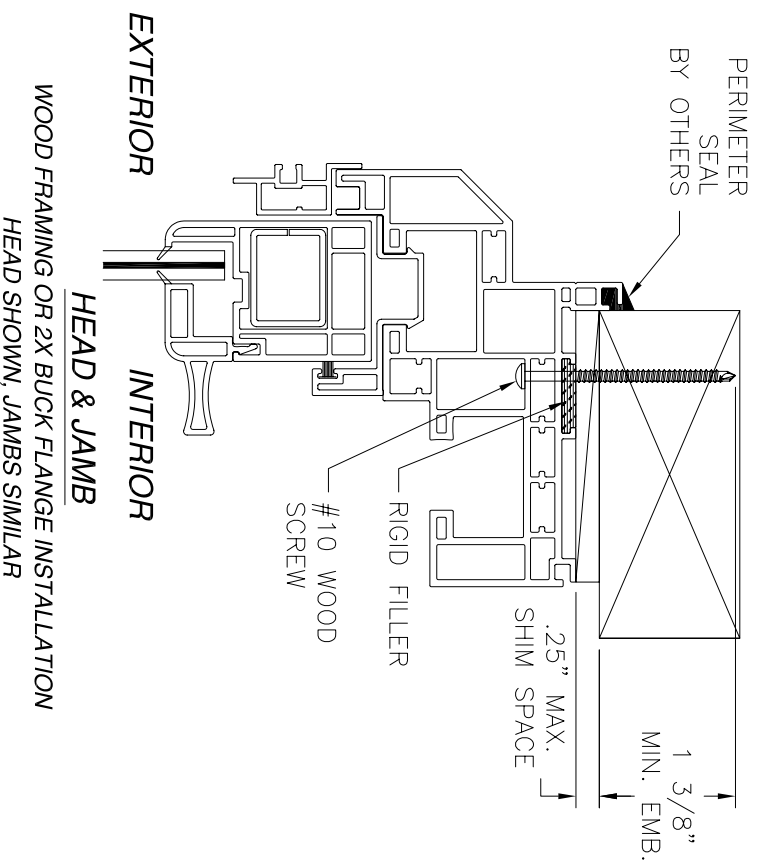
DRAWN: R.L.	DWG. NO. 08/00845	REV
SCALE NTS	DATE 09/02/09	SHEET 1 OF 5



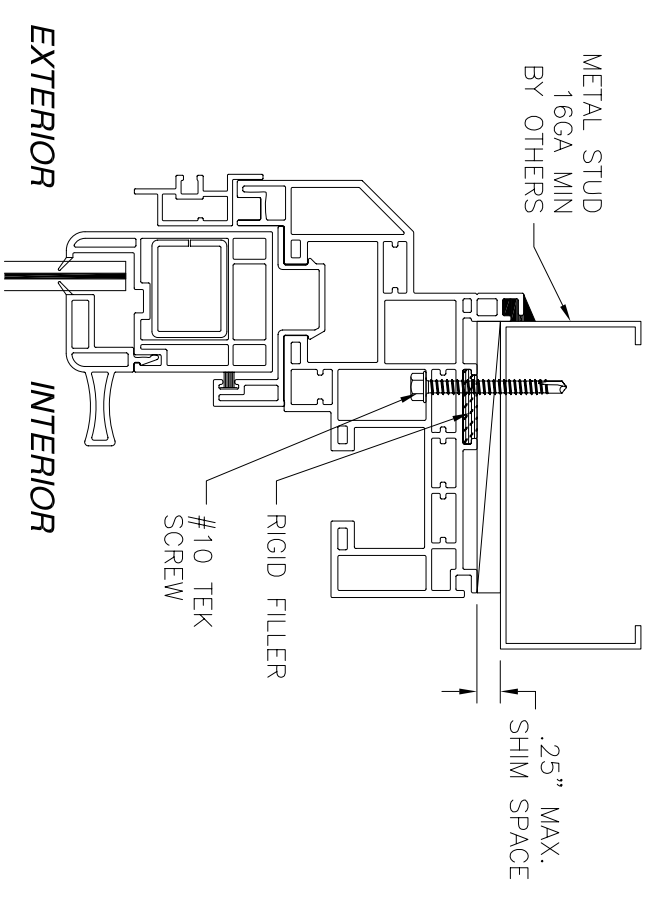
REVISIONS			
REV	DESCRIPTION	DATE	APPROVED



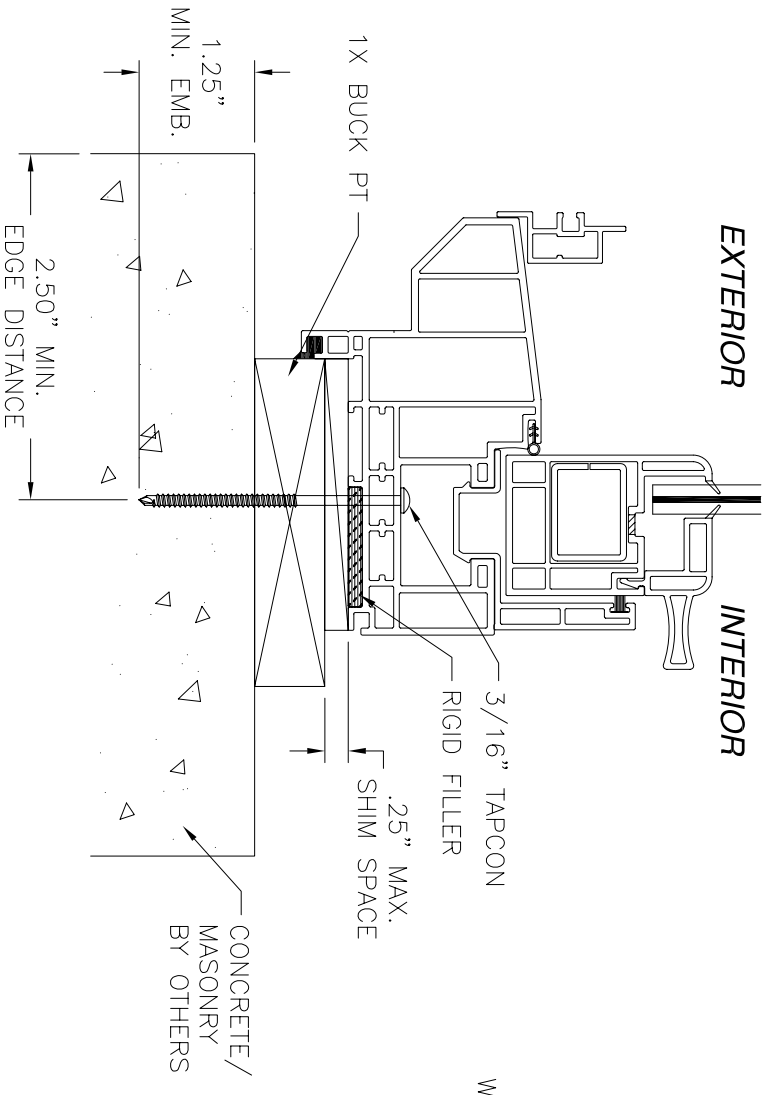
CONCRETE/MASONRY FLANGE INSTALLATION
HEAD & JAMB
HEAD SHOWN, JAMBS SIMILAR



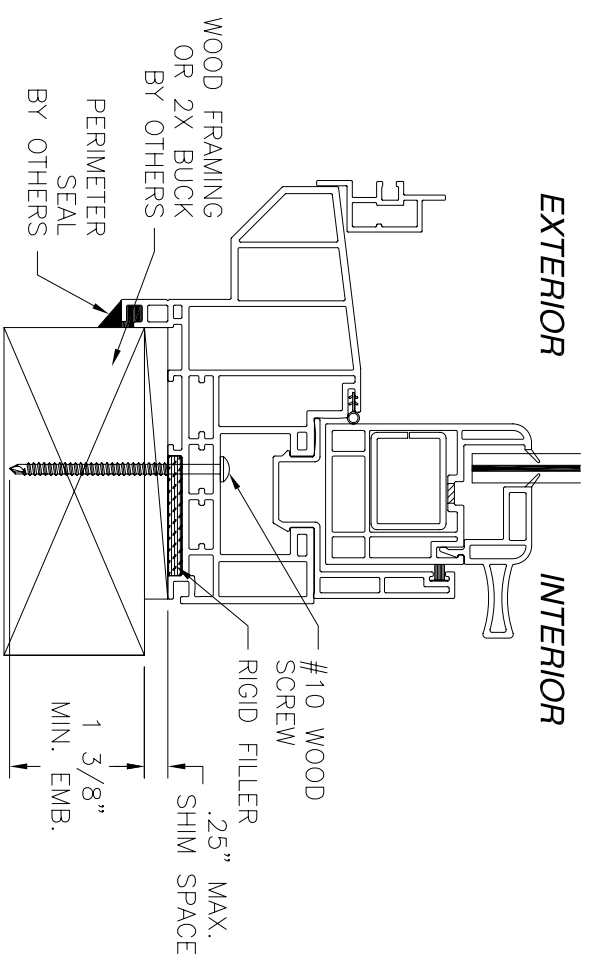
WOOD FRAMING OR 2X BUCK FLANGE INSTALLATION
HEAD & JAMB
HEAD SHOWN, JAMBS SIMILAR



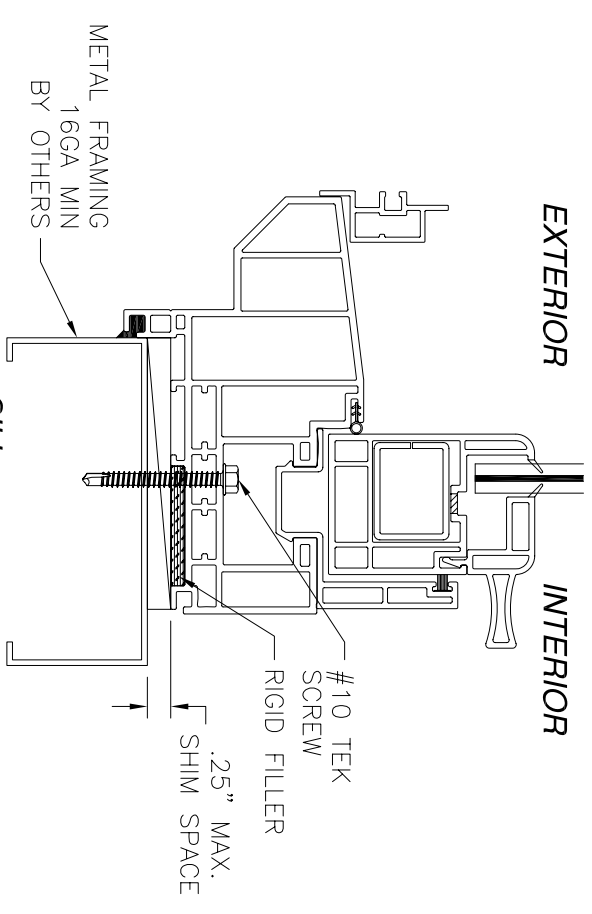
METAL FRAMING FLANGE INSTALLATION
HEAD & JAMB
HEAD SHOWN, JAMBS SIMILAR



CONCRETE/MASONRY FLANGE INSTALLATION
SILL

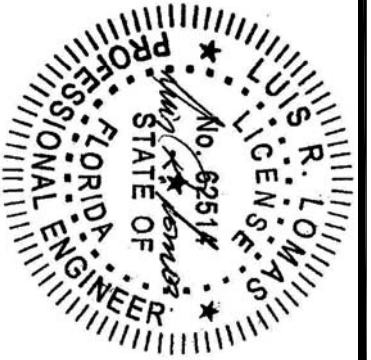


WOOD FRAMING OR 2X BUCK FLANGE
INSTALLATION
SILL

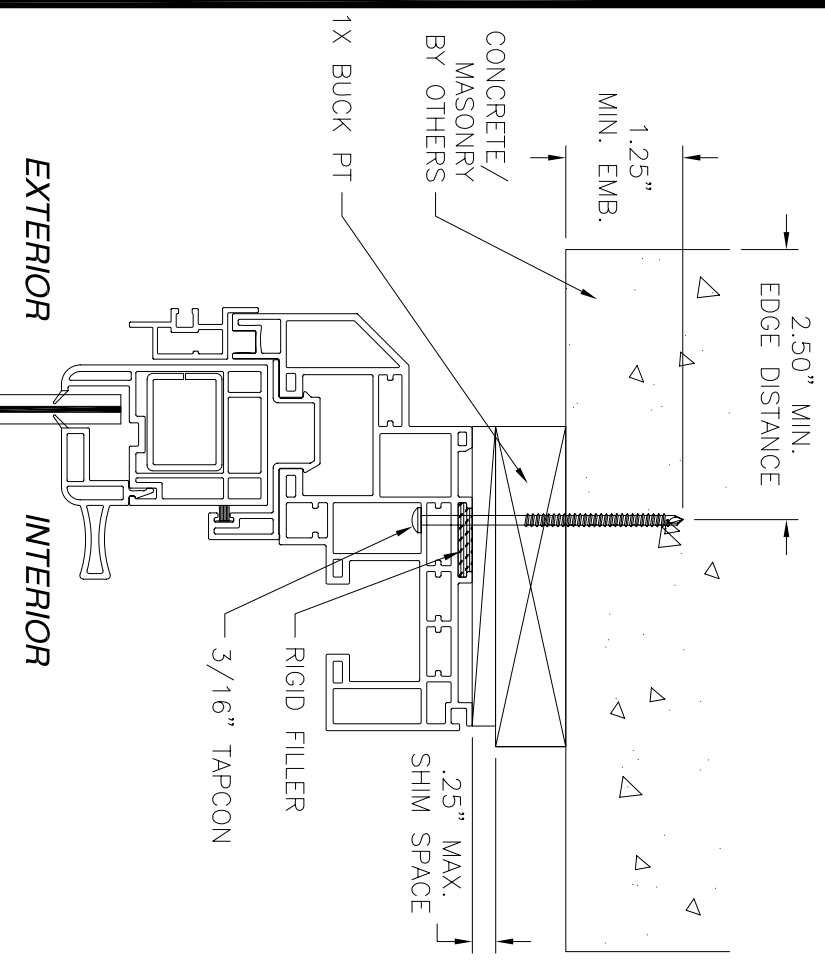


METAL FRAMING FLANGE INSTALLATION
SILL

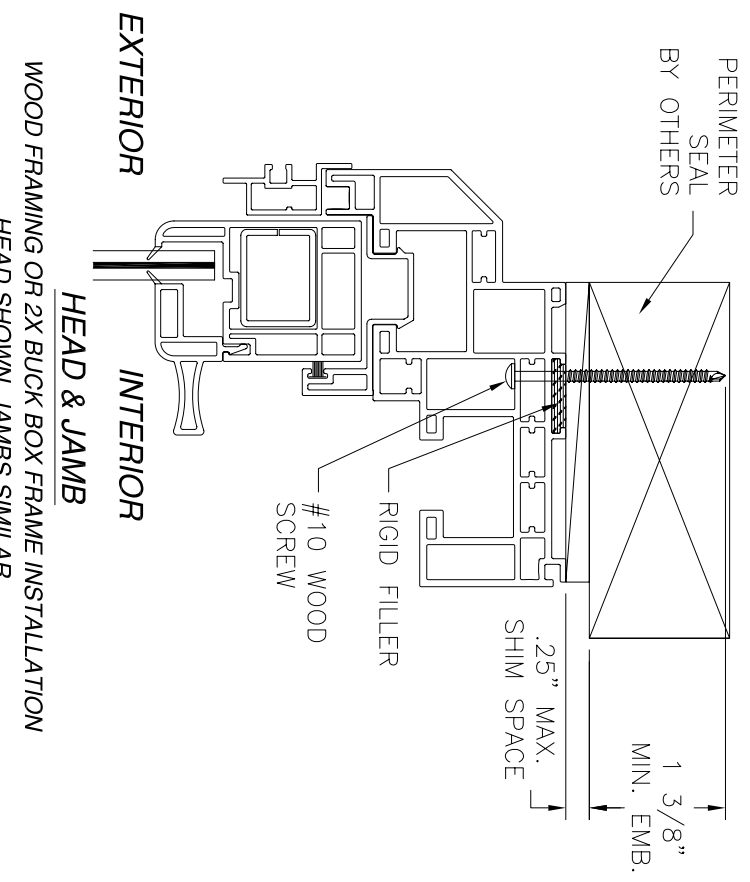
PGT INDUSTRIES 1070 TECHNOLOGY DRIVE NOKOMIS, FL 34275	
DH2760 PVC DOUBLE HUNG WINDOW DH2860 PVC DOUBLE HUNG WINDOW FLANGE INSTALLATION DETAILS	DWG. NO. 08/00845
DRAWN: R.L.	REV
SCALE NTS	DATE 09/02/09
SHEET 2 OF 5	SHEET 2 OF 5



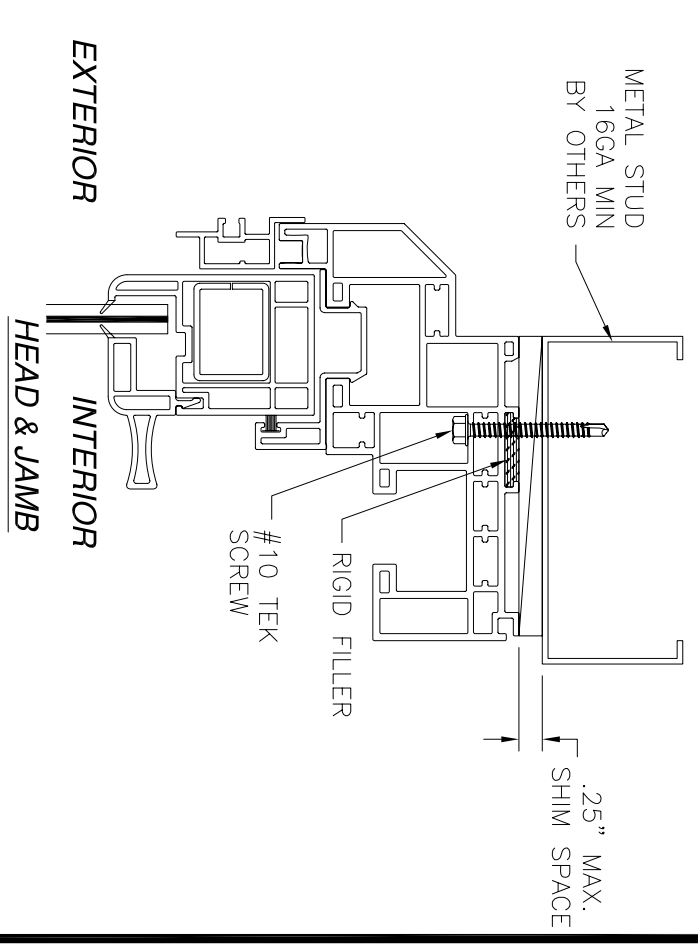
REVISIONS			
REV	DESCRIPTION	DATE	APPROVED



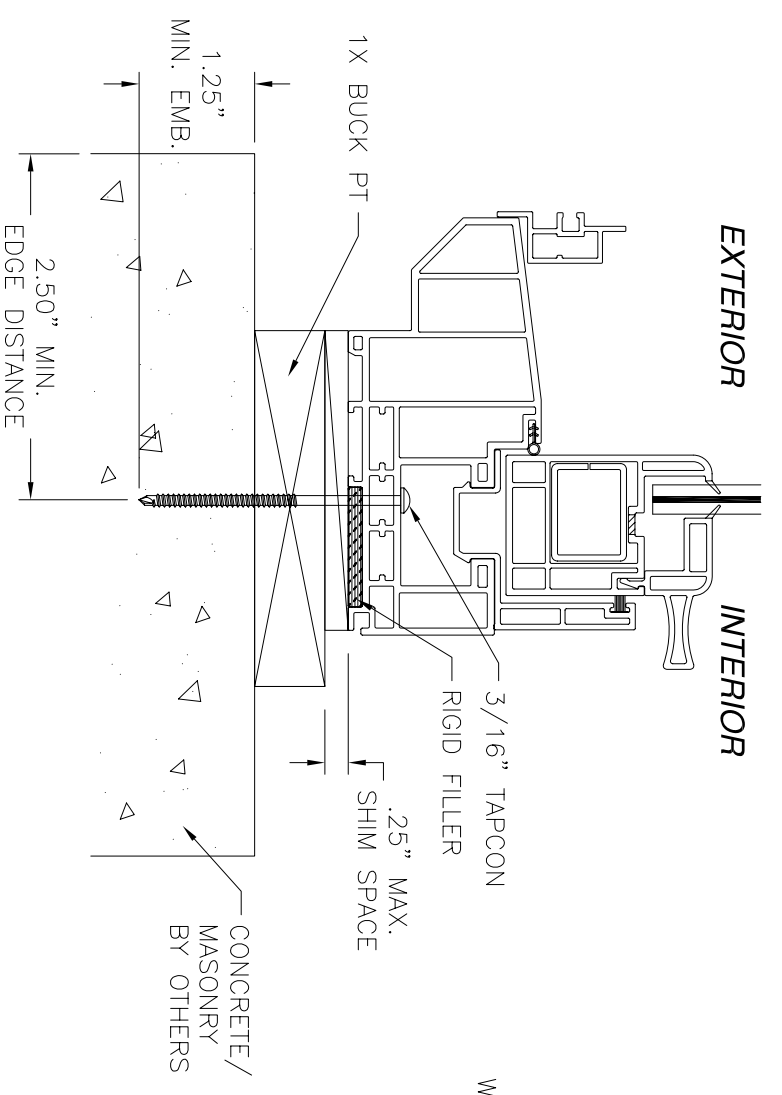
CONCRETE/MASONRY BOX FRAME INSTALLATION
HEAD & JAMB
HEAD SHOWN, JAMBS SIMILAR



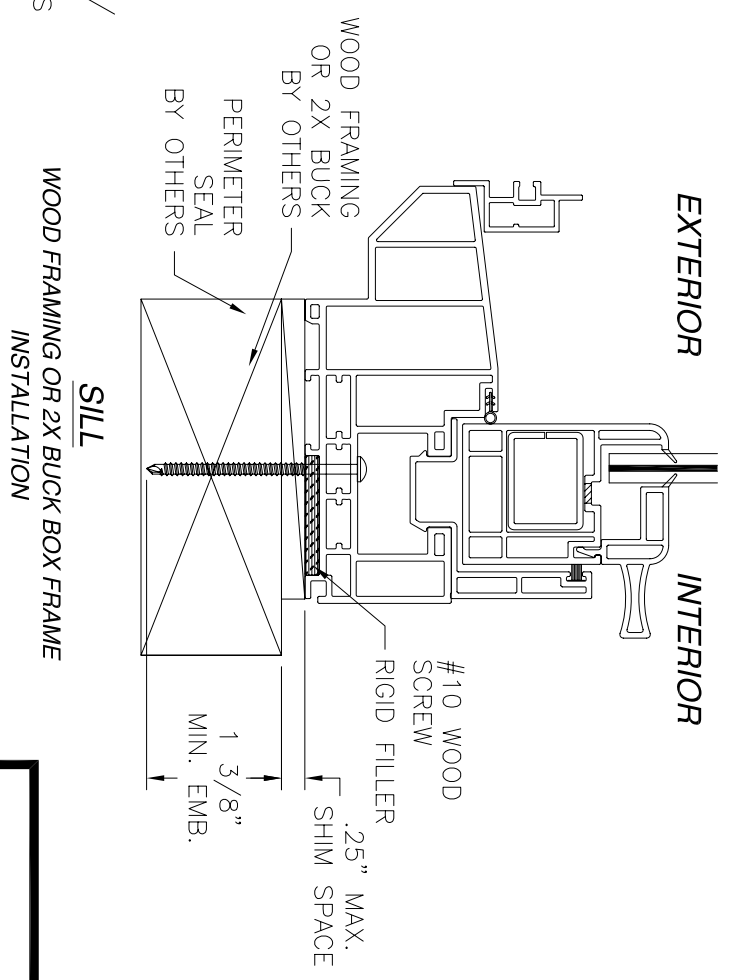
WOOD FRAMING OR 2X BUCK BOX FRAME INSTALLATION
HEAD & JAMB
HEAD SHOWN, JAMBS SIMILAR



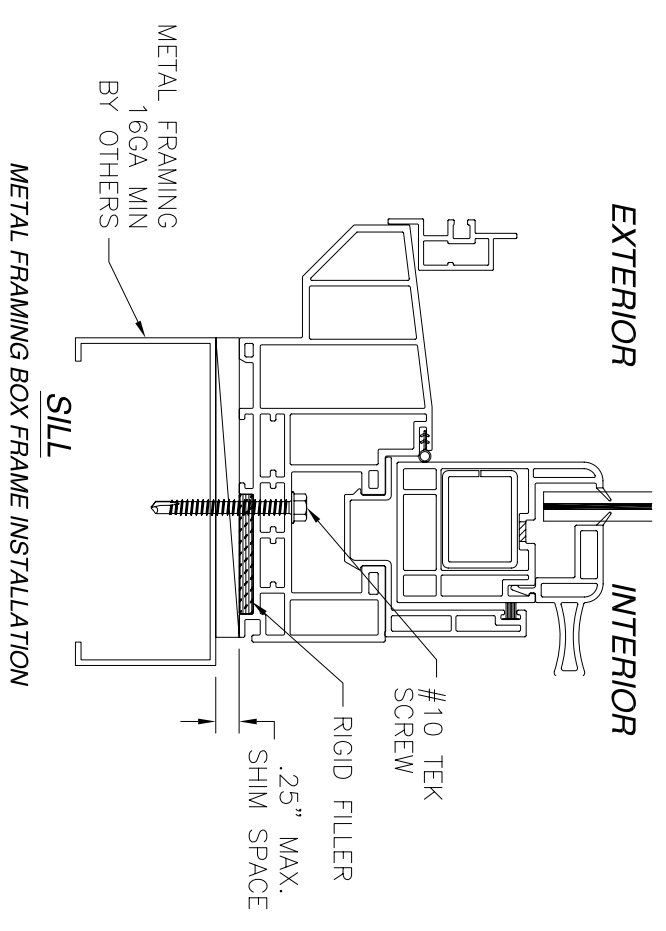
METAL FRAMING BOX FRAME INSTALLATION
HEAD & JAMB
HEAD SHOWN, JAMBS SIMILAR



CONCRETE/MASONRY BOX FRAME INSTALLATION
SILL

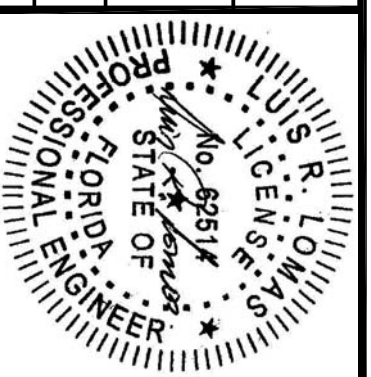


WOOD FRAMING OR 2X BUCK BOX FRAME
INSTALLATION
SILL

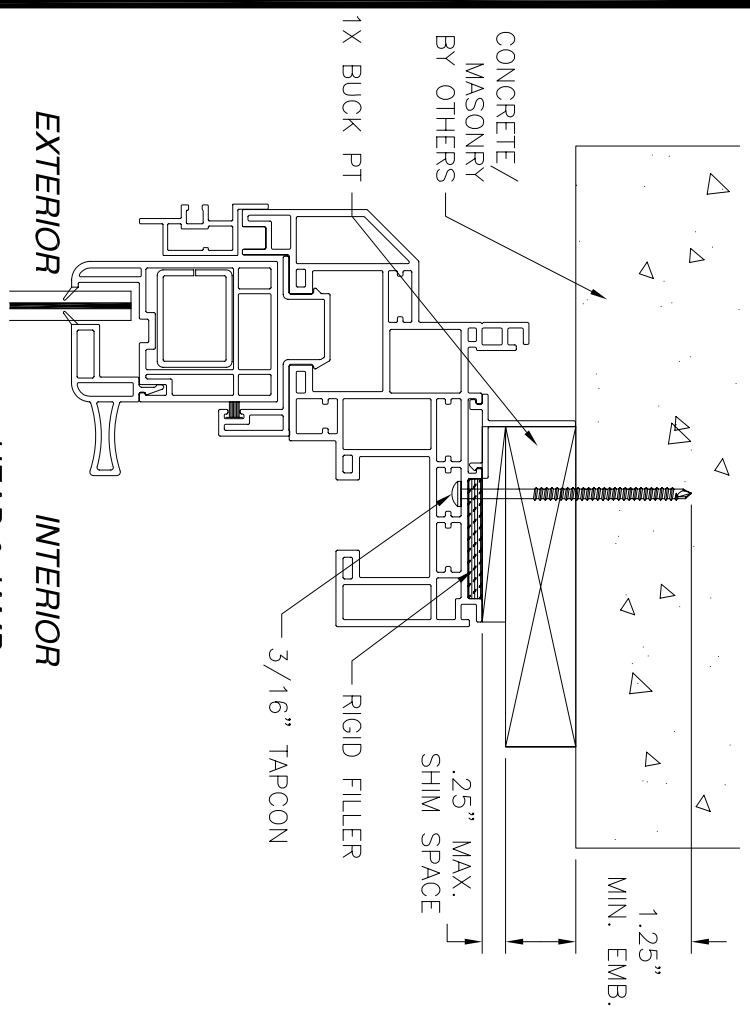


METAL FRAMING BOX FRAME INSTALLATION
SILL

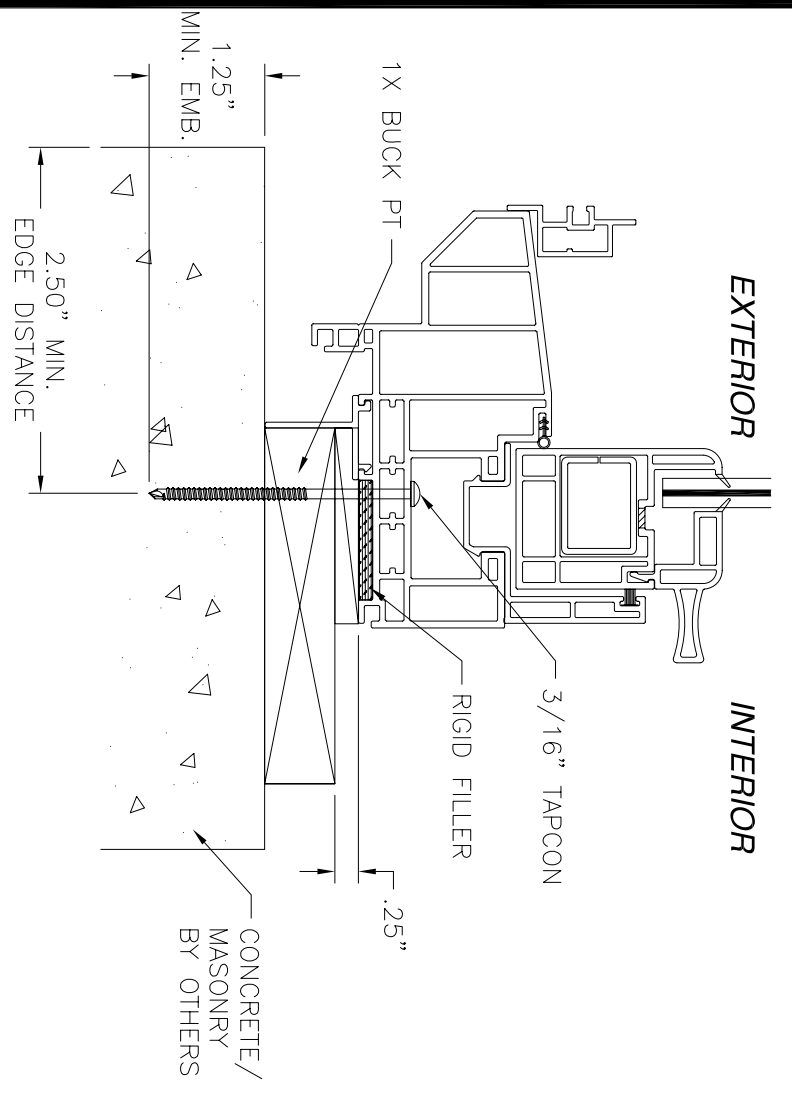
PGT INDUSTRIES 1070 TECHNOLOGY DRIVE NOKOMIS, FL 34275	
DH2760 PVC DOUBLE HUNG WINDOW DH2860 PVC DOUBLE HUNG WINDOW BOX FRAME INSTALLATION DETAILS	DWG. NO. 08/00845
DRAWN: R.L. SCALE: NTS	DATE: 09/02/09 SHEET: 3 OF 5



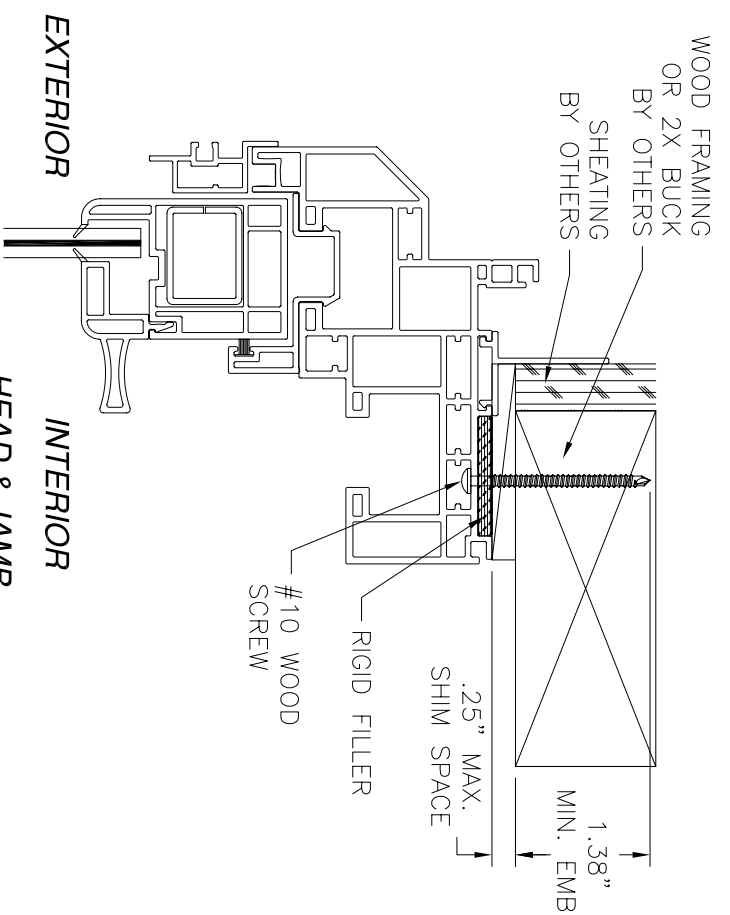
REVISIONS			
REV	DESCRIPTION	DATE	APPROVED



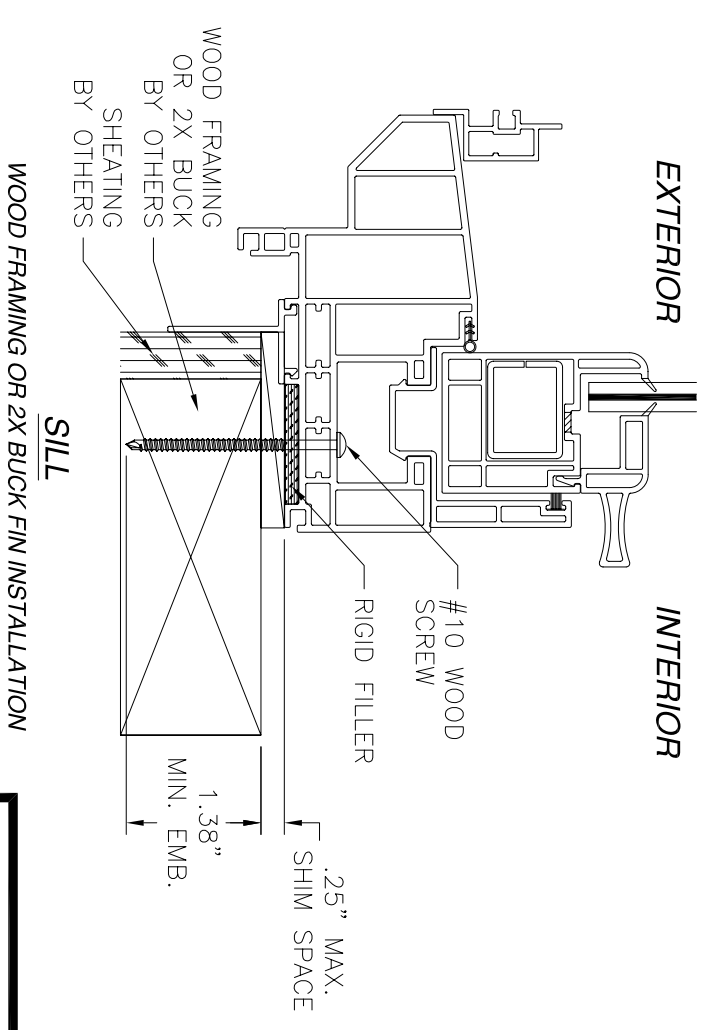
HEAD & JAMB
CONCRETE/MASONRY FIN INSTALLATION
HEAD SHOWN, JAMBS SIMILAR



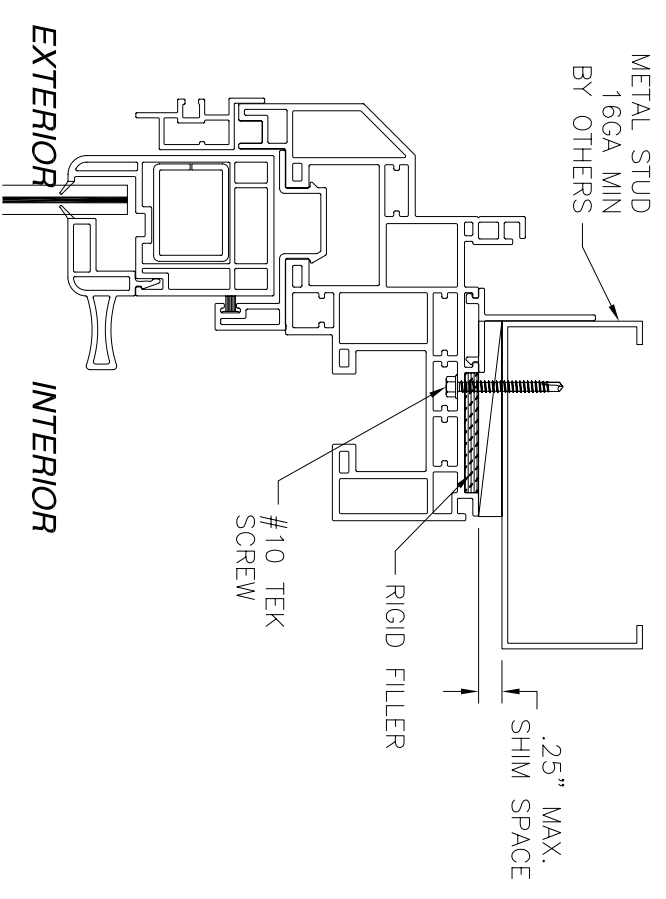
SILL
CONCRETE/MASONRY FIN INSTALLATION



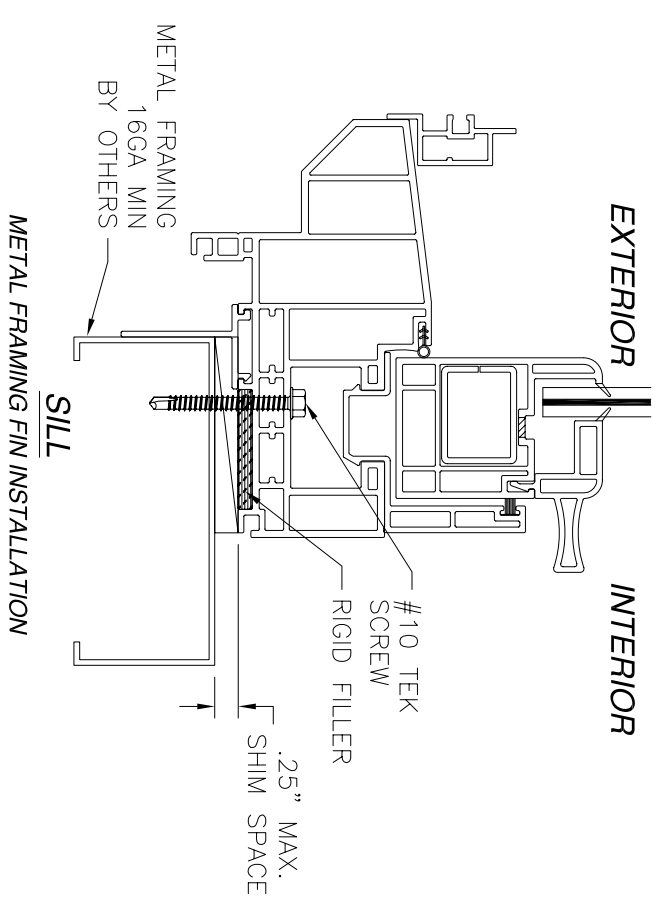
HEAD & JAMB
WOOD FRAMING OR 2X BUCK FIN INSTALLATION
HEAD SHOWN, JAMBS SIMILAR



SILL
WOOD FRAMING OR 2X BUCK FIN INSTALLATION

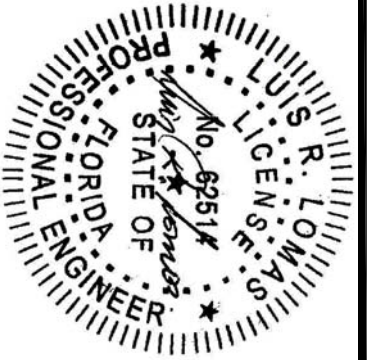


HEAD & JAMB
METAL FRAMING FIN INSTALLATION
HEAD SHOWN, JAMBS SIMILAR

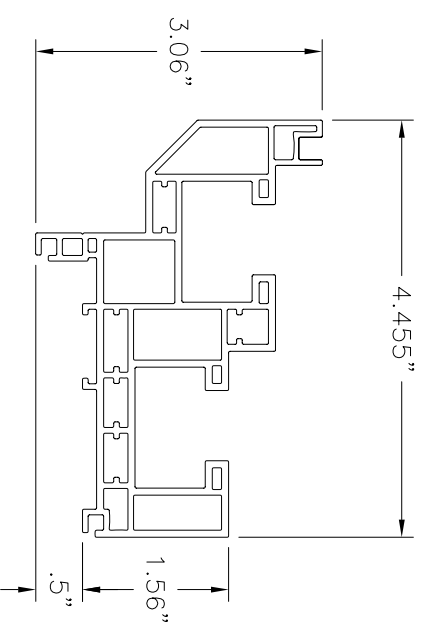


SILL
METAL FRAMING FIN INSTALLATION

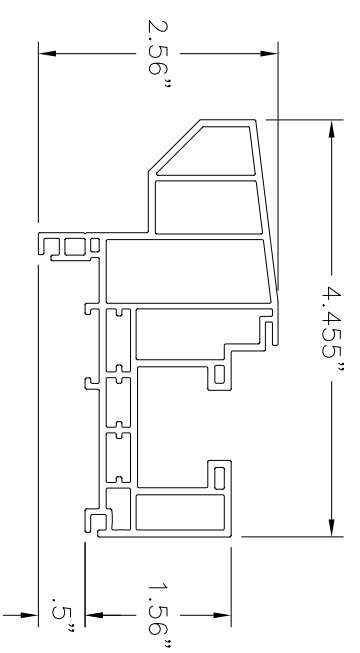
PGT INDUSTRIES 1070 TECHNOLOGY DRIVE NOKOMIS, FL 34275		DWG. NO.	08/00845
DH2760 PVC DOUBLE HUNG WINDOW DH2860 PVC DOUBLE HUNG WINDOW FIN INSTALLATION DETAILS		REV	
DRAWN:	R.L.	SCALE	NTS
DATE	09/02/09	SHEET	4 OF 5



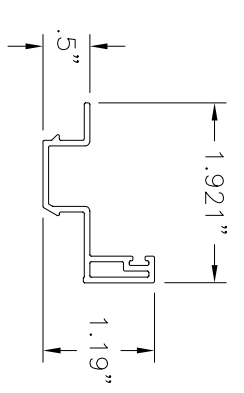
REVISIONS			
REV	DESCRIPTION	DATE	APPROVED



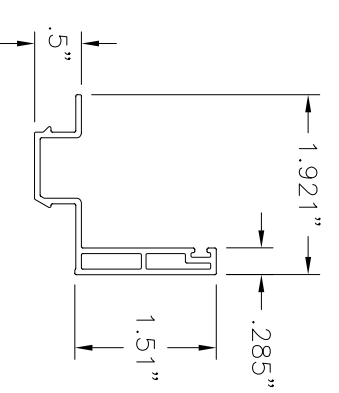
HEAD & JAMB (8301)
VINYL PVC .075" THICK



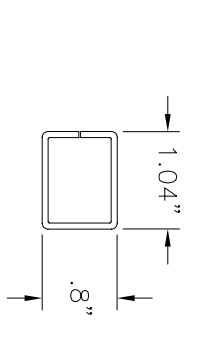
SILL (8302)
VINYL PVC .075" THICK



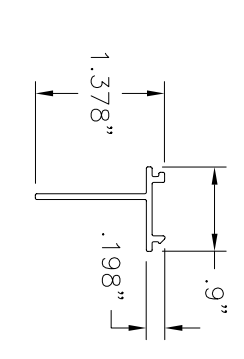
HEAD ADAPTER (8341)
VINYL PVC .06" THICK



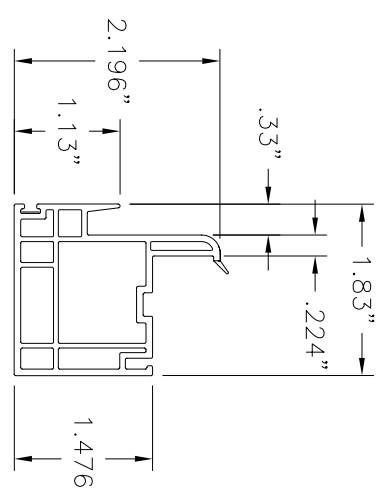
SILL ADAPTER (8342)
VINYL PVC .06" THICK



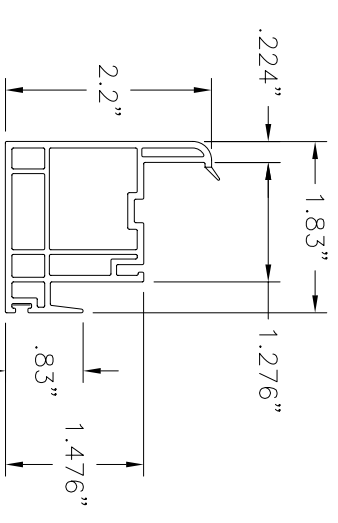
STIFFENER (ST1007B)
16GA GALVANIZED STEEL



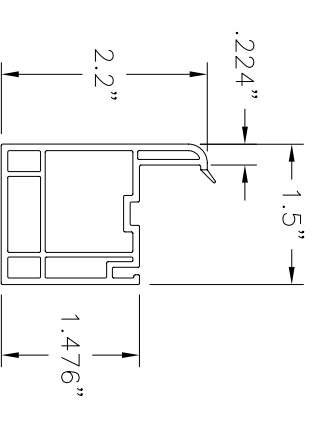
FIN ADAPTER
VINYL PVC .062" THICK



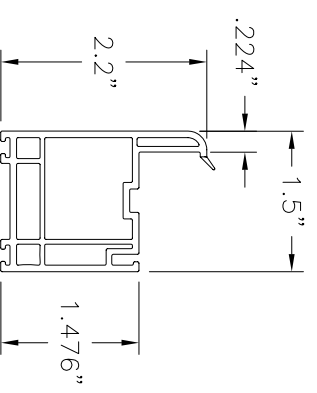
INNER INTERLOCK RAIL (8308)
VINYL PVC .07" THICK



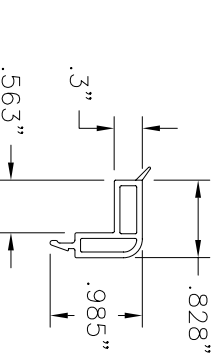
OUTER INTERLOCK RAIL (8307)
VINYL PVC .07" THICK



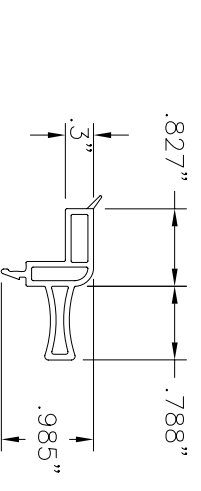
HORIZONTAL SASH (8305)
VINYL PVC .07" THICK



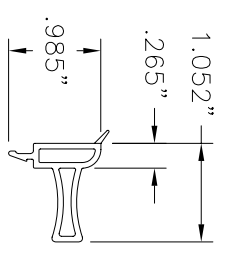
VERTICAL SASH (8306)
VINYL PVC .07" THICK



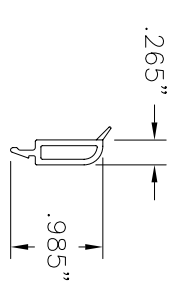
5/16" PLAIN BEAD (8321)
VINYL PVC .06" THICK



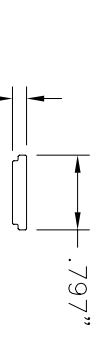
5/16" LIFT BEAD (8320)
VINYL PVC .06" THICK



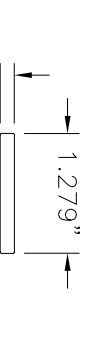
7/8" LIFT BEAD (8324)
VINYL PVC .06" THICK



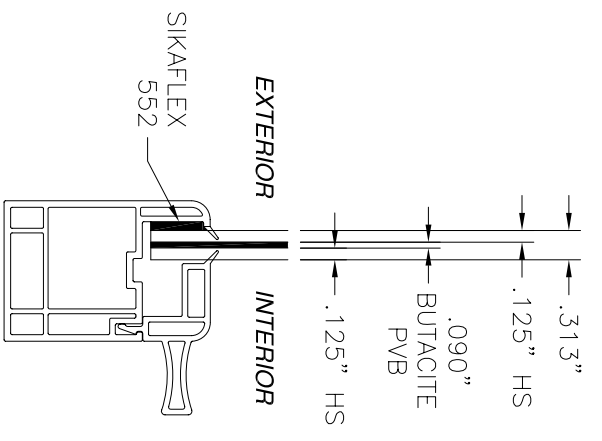
7/8" LIFT BEAD (8325)
VINYL PVC .06" THICK



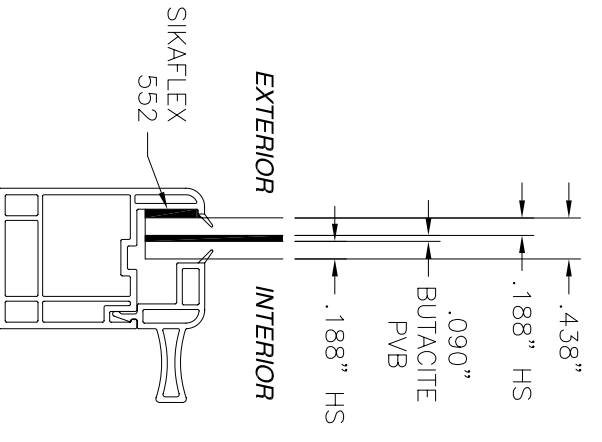
RIGID FILLER
VINYL PVC .15" THICK



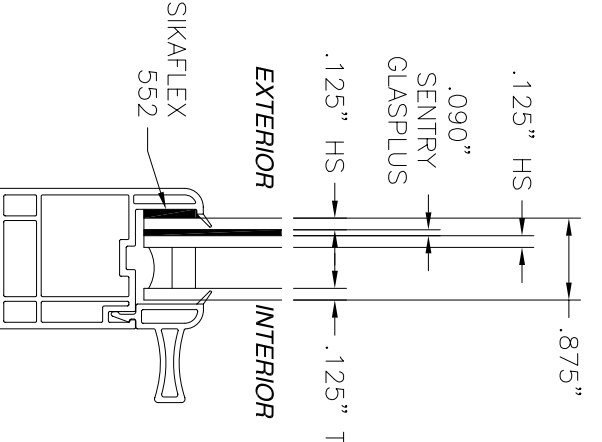
RIGID FILLER
VINYL PVC .15" THICK



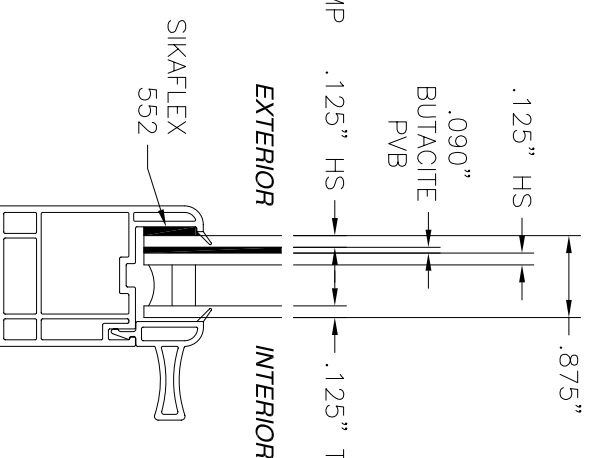
GLASS TYPE A
TO BE USED IN DH1000P



GLASS TYPE B
TO BE USED IN DH1000P



GLASS TYPE C
TO BE USED IN DH 1000S



GLASS TYPE D
TO BE USED IN DH1000P

PGT INDUSTRIES 1070 TECHNOLOGY DRIVE NOKOMIS, FL 34275	
DH2760 PVC DOUBLE HUNG WINDOW DH2860 PVC DOUBLE HUNG WINDOW COMPONENTS AND GLAZING DETAILS	DWG. NO. 08/00845
DRAWN: R.L. SCALE: NTS	DATE: 09/02/09 SHEET: 5 OF 5

