



**BUILDING CODE COMPLIANCE OFFICE (BCCO)
PRODUCT CONTROL DIVISION**

MIAMI-DADE COUNTY, FLORIDA
METRO-DADE FLAGLER BUILDING
140 WEST FLAGLER STREET, SUITE 1603
MIAMI, FLORIDA 33130-1563
(305) 375-2901 FAX (305) 375-2908

NOTICE OF ACCEPTANCE (NOA)

**PGT Industries
1070 Technology Drive
Nokomis, FL 34275**

SCOPE:

This NOA is being issued under the applicable rules and regulations governing the use of construction materials. The documentation submitted has been reviewed by Miami-Dade County Product Control Division and accepted by the Board of Rules and Appeals (BORA) to be used in Miami Dade County and other areas where allowed by the Authority Having Jurisdiction (AHJ).

This NOA shall not be valid after the expiration date stated below. The Miami-Dade County Product Control Division (In Miami Dade County) and/or the AHJ (in areas other than Miami Dade County) reserve the right to have this product or material tested for quality assurance purposes. If this product or material fails to perform in the accepted manner, the manufacturer will incur the expense of such testing and the AHJ may immediately revoke, modify, or suspend the use of such product or material within their jurisdiction. BORA reserves the right to revoke this acceptance, if it is determined by Miami-Dade County Product Control Division that this product or material fails to meet the requirements of the applicable building code.

This product is approved as described herein, and has been designed to comply with the Florida Building Code, including High Velocity Hurricane Zone of the Florida Building Code.

DESCRIPTION: Series SH-4000 Aluminum Single Hung Window W/H.D. MTG. Rail

APPROVAL DOCUMENT: Drawing No. 2737, titled "Aluminum Single Hung Window, W/H.D. MTG. RAIL", dated 04/18/01 with revision "H" on 09/20/06, sheets 1 through 7 of 7, prepared by manufacturer, signed and sealed by Robert L. Clark, P.E., bearing the Miami-Dade County Product Control Renewal stamp with the Notice of Acceptance number and expiration date by the Miami-Dade County Product Control Division.

MISSILE IMPACT RATING: None

LABELING: Each unit shall bear a permanent label with the manufacturer's name or logo, city, state and following statement: "Miami-Dade County Product Control Approved", unless otherwise noted herein.

RENEWAL of this NOA shall be considered after a renewal application has been filed and there has been no change in the applicable building code negatively affecting the performance of this product.

TERMINATION of this NOA will occur after the expiration date or if there has been a revision or change in the materials, use, and/or manufacture of the product or process. Misuse of this NOA as an endorsement of any product, for sales, advertising or any other purposes shall automatically terminate this NOA. Failure to comply with any section of this NOA shall be cause for termination and removal of NOA.

ADVERTISEMENT: The NOA number preceded by the words Miami-Dade County, Florida, and followed by the expiration date may be displayed in advertising literature. If any portion of the NOA is displayed, then it shall be done in its entirety.

INSPECTION: A copy of this entire NOA shall be provided to the user by the manufacturer or its distributors and shall be available for inspection at the job site at the request of the Building Official.

This NOA renews NOA # 05-0112.01 and, consists of this page 1 and evidence pages E-1, and E-2, as well as approval document mentioned above.

The submitted documentation was reviewed by **Jaime D. Gascon, P.E.**



*J. Gascon
9/29/06*

NOA No 06-0706.03
Expiration Date: October 08, 2011
Approval Date: October 19, 2006
Page 1

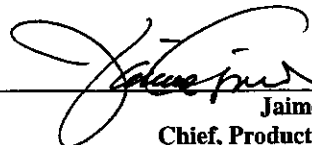
NOTICE OF ACCEPTANCE: EVIDENCE SUBMITTED

A. DRAWINGS

1. Manufacturers die drawings and sections.
2. Drawing No. 2737, titled "Aluminum Single Hung Window, W/H.D. MTG. RAIL", dated 04/18/01 with revision "H" on 09/20/06, sheets 1 through 7 of 7, prepared by manufacturer, signed and sealed by Robert L. Clark, P.E.

B. TESTS

1. Test reports on 1) Air Infiltration Test, per FBC, TAS 202-94
2) Uniform Static Air Pressure Test, Loading per FBC, TAS 202-94
3) Water Resistance Test, per FBC, TAS 202-94
4) Forced Entry Test, per FBC 2411.3.2.1 (b) and TAS 202-94
along with marked-up drawings and installation diagram of aluminum single hung windows, prepared by Fenestration Testing Laboratory, Inc., Test Report No. **FTL-4378**, dated 11/04/04, signed and sealed by Edmundo J. Largaespada, P.E.
2. Test reports on 1) Air Infiltration Test, per FBC, TAS 202-94
2) Uniform Static Air Pressure Test, Loading per FBC, TAS 202-94
3) Water Resistance Test, per FBC, TAS 202-94
4) Forced Entry Test, per FBC 2411.3.2.1 (b) and TAS 202-94
along with marked-up drawings and installation diagram of aluminum single hung windows, prepared by Fenestration Testing Laboratory, Inc., Test Report No. **FTL-2957, 2959, 2965, and 2967** dated various, signed and sealed by Antonio Acevedo, P.E. "*Submitted under NOA# 05-0112.01*"
3. Test report on 1) Uniform Static Air Pressure Test, Loading per FBC, TAS 202-94
along with marked-up drawings and installation diagram of aluminum single hung window, prepared by Fenestration Testing Laboratory, Inc., Test Report No. **FTL-2958, 2961, 2963, 2964, 2966, 2968, and 2969**, dated 01/17/01, signed and sealed by Antonio Acevedo, P.E. "*Submitted under NOA# 05-0112.01*"
4. Test report on 1) Uniform Static Air Pressure Test, Loading per FBC, TAS 202-94
along with marked-up drawings and installation diagram of aluminum single hung window, prepared by Fenestration Testing Laboratory, Inc., Test Report No. **FTL-3986**, dated 01/17/01, signed and sealed by Edmundo J. Largaespada, P.E. "*Submitted under NOA# 05-0112.01*"
5. Test report on 1) Uniform Static Air Pressure Test, Loading per FBC, TAS 202-94
along with marked-up drawings and installation diagram of aluminum single hung window, prepared by Fenestration Testing Laboratory, Inc., Test Report No. **FTL-4253**, dated 06/21/04, signed and sealed by Edmundo J. Largaespada, P.E. "*Submitted under NOA# 05-0112.01*"



Jaime D. Gascon, P.E.

Chief, Product Control Division

NOA No 06-0706.03

Expiration Date: October 08, 2011

Approval Date: October 19, 2006

NOTICE OF ACCEPTANCE: EVIDENCE SUBMITTED

6. Test reports on
 - 1) Air Infiltration Test, per FBC, TAS 202-94
 - 2) Uniform Static Air Pressure Test, Loading per FBC, TAS 202-94
 - 3) Water Resistance Test, per FBC, TAS 202-94
 - 4) Forced Entry Test, per FBC 2411.3.2.1 (b) and TAS 202-94along with marked-up drawings and installation diagram of aluminum single hung windows, prepared by Fenestration Testing Laboratory, Inc., Test Report No. **FTL-4178** dated 04/07/04, signed and sealed by Edmundo J. Largaespada, P.E.
"Submitted under NOA# 05-0112.01"

- C. **CALCULATIONS**
 1. Revised Anchor Calculations, ASTM-E1300-02, and structural analysis, prepared by PGT Engineering, dated 09/22/06, signed and sealed by Robert L. Clark, P.E.

- D. **QUALITY ASSURANCE**
 1. Miami Dade Building Code Compliance Office (BCCO).

- E. **MATERIAL CERTIFICATIONS**
 1. None

- F. **STATEMENTS**
 1. Statement letter of conformance and no financial interest, dated March 17, 2004, signed by Robert L. Clark, P.E. *"Submitted under NOA# 04-0319.02"*
 2. Laboratory compliance statement as part of test reports for Test Report No. **FTL-2957**, and **2958**, issued by Fenestration Testing Laboratory, Inc., signed and sealed by signed and sealed by Antonio Acevedo, P.E.
"Submitted under NOA# 04-0319.02"

- G. **OTHER**
 1. Letter from the consultant stating that the product is in compliance with the Florida Building Code (Code).
 2. Notice of Acceptance No. **05-0112.01**, issued to PGT Industries, for "SH-4000 Alum. Single Hung Window W/H.D. MTG. Rail", approved on 3/31/05 and expiring 10/08/06.



Jaime D. Gascon, P.E.
Chief, Product Control Division
NOA No 06-0706.03

Expiration Date: October 08, 2011
Approval Date: October 19, 2006

Revised By	Date	Revisions
F.K.	08/20/06	H ADD AIR SPARGE DIM. TO I.G. GLASS REQUIRES.
J.L.	08/04/05	G REVISE NOTE 6, 7 & MAR. ADD NOTE 6.
F.K.	12/16/04	F ADD ALT. EXTRUSIONS
Checked By	Date	Checked By
J.J.	07/18/01	W/14/06

100 TECHNOLOGY DRIVE
NOKOMIS FL 34473
P.O. BOX 1528
NOKOMIS FL 34274

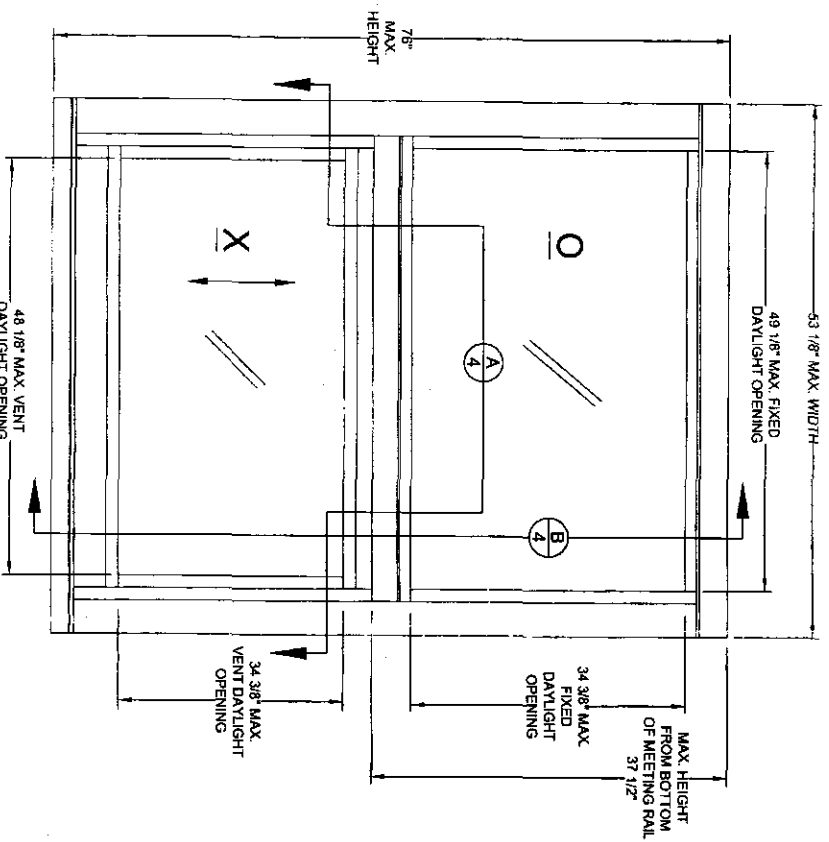


Description	
ELEVATION & NOTES	
THE ALLUM. SINGLE HUNG WINDOW, W/ H.D. MTG. RAIL	
Manufacturer	NTS
Scale	1" = 7'
Drawing No.	2737
Rev.	H

PRODUCT REVIEWED
as complying with the Florida
Building Code
Date: 01/20/09
Approved By: [Signature]
Professional Seal: [Signature]
Registered Professional Engineer
Division

Robert L. Clark, P.E.
PE #39172
Structural

9/2/06

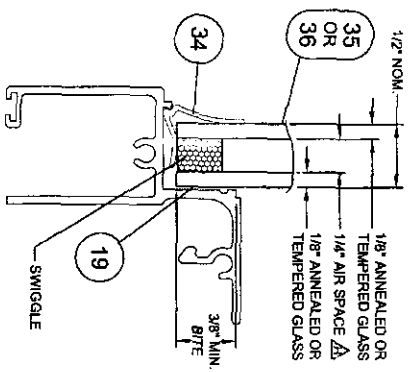


OUTSIDE ELEVATION

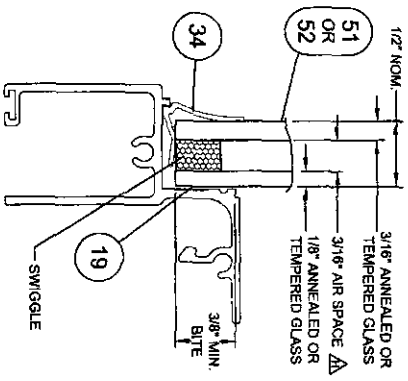
- NOTES: NON-IMPACT WINDOWS
- GLAZING OPTIONS: (SEE TABLES, SHEET 3 FOR DESIGN PRESSURES)
 - 3/16" TEMPERED GLASS
 - 3/16" ANNEALED GLASS
 - 1/2" I.G. GLASS (1/8" TEMPERED, 1/4" AIR SPACE, 1/8" TEMPERED)
 - 1/2" I.G. GLASS (1/8" ANNEALED, 1/4" AIR SPACE, 1/8" ANNEALED)
 - 1/2" I.G. GLASS (3/16" TEMPERED, 3/16" AIR SPACE, 1/8" TEMPERED)
 - 1/2" I.G. GLASS (3/16" ANNEALED, 3/16" AIR SPACE, 1/8" ANNEALED)
 - 1/4" TEMPERED GLASS
 - 1/4" ANNEALED GLASS
 - MANUFACTURED WITH HEAVY DUTY MEETING RAIL
 - SHUTTERS ARE REQUIRED WHERE IMPACT RESISTANCE IS REQUIRED. SHUTTERS MUST BE MIAMI-DADE COUNTY APPROVED FOR INSTALLATION IN MIAMI-DADE COUNTY.
 - SEE SHEET 4 FOR SECTION DETAILS.
 - FOR ANCHORAGE REQUIREMENTS SEE SHEETS 6 AND 7. THE 33 1/3 STRESS INCREASE HAS NOT BEEN USED IN THE DESIGN OF THIS PRODUCT
 - SEALANTS: FRAME CORNERS, FIXED MEETING RAIL SEAMS AND VENT CORNERS WITH CLEAR COLORED SEALANT.
 - REFERENCES: TEST REPORTS FTL-2967, FTL-2958, FTL-3996, FTL-3987, FTL-4263 AND FTL-4378
ELCO TEXTRON NOK: 04-0721.01, 03-0225.05
ANSI/AIAA NDS-2001 FOR WOOD CONSTRUCTION
ADM-2000 ALUMINUM DESIGN MANUAL.
 - THIS PRODUCT HAS BEEN DESIGNED & TESTED TO COMPLY WITH THE REQUIREMENTS OF THE FLORIDA BUILDING CODE, 2004 EDITION FOR THE HIGH VELOCITY HURRICANE ZONE (HVHZ).

NOA DRAWING MAP

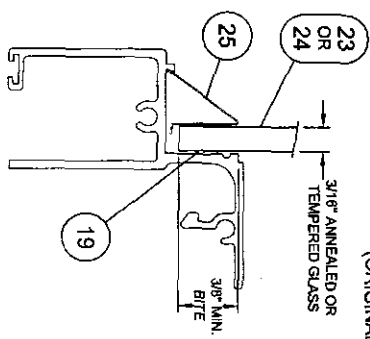
SHEET	
GENERAL NOTES	1
ELEVATIONS	1
GLAZING DETAILS	2
DESIGN PRESSURES	3
VERT. SECTIONS	4
HORIZ. SECTIONS	4
PARTS LIST	5
EXTRUSIONS	5
ANCHORAGE	6-7



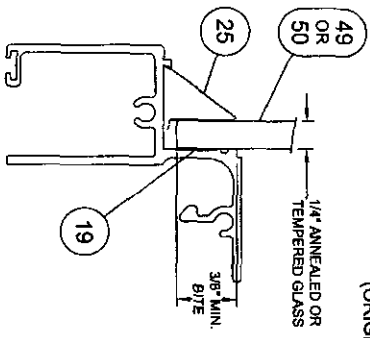
1/2" I.G. GLAZING DETAIL
(ORIGINAL DESIGN)



1/2" I.G. GLAZING DETAIL
(ORIGINAL DESIGN)



3/16" GLAZING DETAIL
(ORIGINAL DESIGN)



1/4" GLAZING DETAIL
(ORIGINAL DESIGN)

Revised By: F.K.	Date: 09/20/06	Revisions: H	ADD AIR SPACE DIM. TO I.G. GLASS DETAILS.
Revised By: J.J.	Date: 08/04/05	Revisions: G	REMOVED OBSOLETE ALT. EXT.
Drawn By: F.K.	Date: 12/16/04	Revisions: F	ADD ALT. EXTR. & GLAZING
Checked By: F.K.	Date: 4/18/01	Revisions: J.J.	ADD ALT. EXTR. & GLAZING

1070 TECHNOLOGY DRIVE
NOKOMIS, FL 34275
P.O. BOX 1628
NOKOMIS, FL 34274



GLAZING DETAILS			
Material:	Size:	Quantity:	Notes:
ALUM. SINGLE HUNG WINDOW, W/ H.D. MTG. RAIL	Full	2 x 7	2737
SH4000			H

PRODUCT ENGINEERED
IN ACCORDANCE WITH THE FEDERAL
BUILDING CODE
Approved By: *[Signature]*
Expiration Date: 10/20/11
The Glazing Products Council
Division

[Signature]
9/22/06
Robert L. Clark, P.E.
E-363/72
Structural

COMPARATIVE ANALYSIS:

TABLE 1.

WINDOW WIDTH	GLASS TYPE	WINDOW HEIGHT					
		26"	38 3/8"	50 6/8"	63"	76"	
19 1/8"	A, G	+56.7	-90.0	+56.7	-90.0	+56.7	-90.0
	B	+56.7	-90.0	+56.7	-90.0	+56.7	-90.0
	H	+56.7	-90.0	+56.7	-90.0	+56.7	-90.0
	C, E	+56.7	-90.0	+56.7	-90.0	+56.7	-90.0
24"	D, F	+56.7	-90.0	+56.7	-90.0	+56.7	-90.0
	A, G	+56.7	-90.0	+56.7	-90.0	+56.7	-90.0
	B	+56.7	-90.0	+56.7	-90.0	+56.7	-90.0
	H	+56.7	-90.0	+56.7	-90.0	+56.7	-90.0
26 1/2"	C, E	+56.7	-90.0	+56.7	-90.0	+56.7	-90.0
	D, F	+56.7	-90.0	+56.7	-90.0	+56.7	-90.0
	A, G	+56.7	-90.0	+56.7	-90.0	+56.7	-90.0
	H	+56.7	-90.0	+56.7	-90.0	+56.7	-90.0
32"	C, E	+56.7	-90.0	+56.7	-90.0	+56.7	-90.0
	D, F	+56.7	-90.0	+56.7	-90.0	+56.7	-90.0
	A, G	+56.7	-90.0	+56.7	-90.0	+56.7	-90.0
	H	+56.7	-90.0	+56.7	-90.0	+56.7	-90.0
37"	C, E	+56.7	-90.0	+56.7	-90.0	+56.7	-90.0
	D, F	+56.7	-90.0	+56.7	-90.0	+56.7	-90.0
	A, G	+56.7	-90.0	+56.7	-90.0	+56.7	-90.0
	H	+56.7	-90.0	+56.7	-90.0	+56.7	-90.0
40"	C, E	+56.7	-90.0	+56.7	-90.0	+56.7	-90.0
	D, F	+56.7	-90.0	+56.7	-90.0	+56.7	-90.0
	A, G	+56.7	-90.0	+56.7	-90.0	+56.7	-90.0
	H	+56.7	-90.0	+56.7	-90.0	+56.7	-90.0
44"	C, E	+56.7	-90.0	+56.7	-90.0	+56.7	-90.0
	D, F	+56.7	-90.0	+56.7	-90.0	+56.7	-90.0
	A, G	+56.7	-90.0	+56.7	-90.0	+56.7	-90.0
	H	+56.7	-90.0	+56.7	-90.0	+56.7	-90.0
48"	C, E	+56.7	-90.0	+56.7	-90.0	+56.7	-90.0
	D, F	+56.7	-90.0	+56.7	-90.0	+56.7	-90.0
	A, G	+56.7	-90.0	+56.7	-90.0	+56.7	-90.0
	H	+56.7	-90.0	+56.7	-90.0	+56.7	-90.0
53 1/8"	C, E	+56.7	-90.0	+56.7	-90.0	+56.7	-90.0
	D, F	+56.7	-90.0	+56.7	-90.0	+56.7	-90.0
	A, G	+56.7	-90.0	+56.7	-90.0	+56.7	-90.0
	H	+56.7	-90.0	+56.7	-90.0	+56.7	-90.0

NOTES:

- 1. GLASS TYPES: A, 3/16" TEMPERED
B, 3/16" ANNEALED
C, 1/2" LG. (1/8" T, 1/4" AIR SPACE, 1/8" T)
D, 1/2" LG. (1/8" A, 1/4" AIR SPACE, 1/8" T)
E, 1/2" LG. (3/16" T, 3/16" AIR SPACE, 1/8" T)
F, 1/2" LG. (3/16" A, 3/16" AIR SPACE, 1/8" T)
G, 1/4" TEMPERED
H, 1/4" ANNEALED
- 2. NEGATIVE DESIGN LOADS BASED ON TESTED PRESSURE AND GLASS TABLES ASTM E 1300-02. Δ
- 3. POSITIVE DESIGN LOADS BASED ON WATER TESTED PRESSURE AND GLASS TABLES ASTM E 1300-02. Δ
- 4. SEE SHEETS 6 AND 7 FOR ANCHORAGE INFORMATION.

RATED BY: 08/20/06
 REVISION: 03/25/06
 DATE: 12/16/04
 F.K. 4/18/01
 J.J. 6/14/06
 ADD GLASS TYPES AND NOTE 3.

REMOVE EXISTING GLASS AND REINSTALL NEW GLASS INTO ONE OF THE FOLLOWING TYPES:
 A. 3/16" TEMPERED
 B. 3/16" ANNEALED
 C. 1/2" LG. (1/8" T, 1/4" AIR SPACE, 1/8" T)
 D. 1/2" LG. (1/8" A, 1/4" AIR SPACE, 1/8" T)
 E. 1/2" LG. (3/16" T, 3/16" AIR SPACE, 1/8" T)
 F. 1/2" LG. (3/16" A, 3/16" AIR SPACE, 1/8" T)
 G. 1/4" TEMPERED
 H. 1/4" ANNEALED

1070 TECHNOLOGY DRIVE
 P.O. BOX 1939
 NOKOMIS, FL 32474

PQT
 Valby Reiter

DESIGN PRESSURES
 ALUM. SINGLE HUNG WINDOW, W/H.D. MTG. RAIL
 SH4000
 DATE: NTS
 3 7
 2737

PRODUCT SERVICES
 We are committed to providing you with the products and services you need to meet your needs. We are committed to providing you with the products and services you need to meet your needs.

Approved by: *[Signature]*
 Date: 12/16/04
 Title: Project Engineer
 Division:

KENNETH L. CLARK, P.E.
 TEL: 139712
 Structural

Revised By	Date	Revisions
J.L.	08/04/05	NO CHANGE THIS SHEET
Issued By	Date	Revisions
F.K.	12/16/04	UPDATE EXTRUSIONS AND CORRECT NOTE 2, ITEM 23 NOT 25.
Drawn By	Date	Revisions
F.K.	07/18/01	UPDATE EXTRA NOTES
Checked By	Date	Revisions
J.J.	07/14/06	

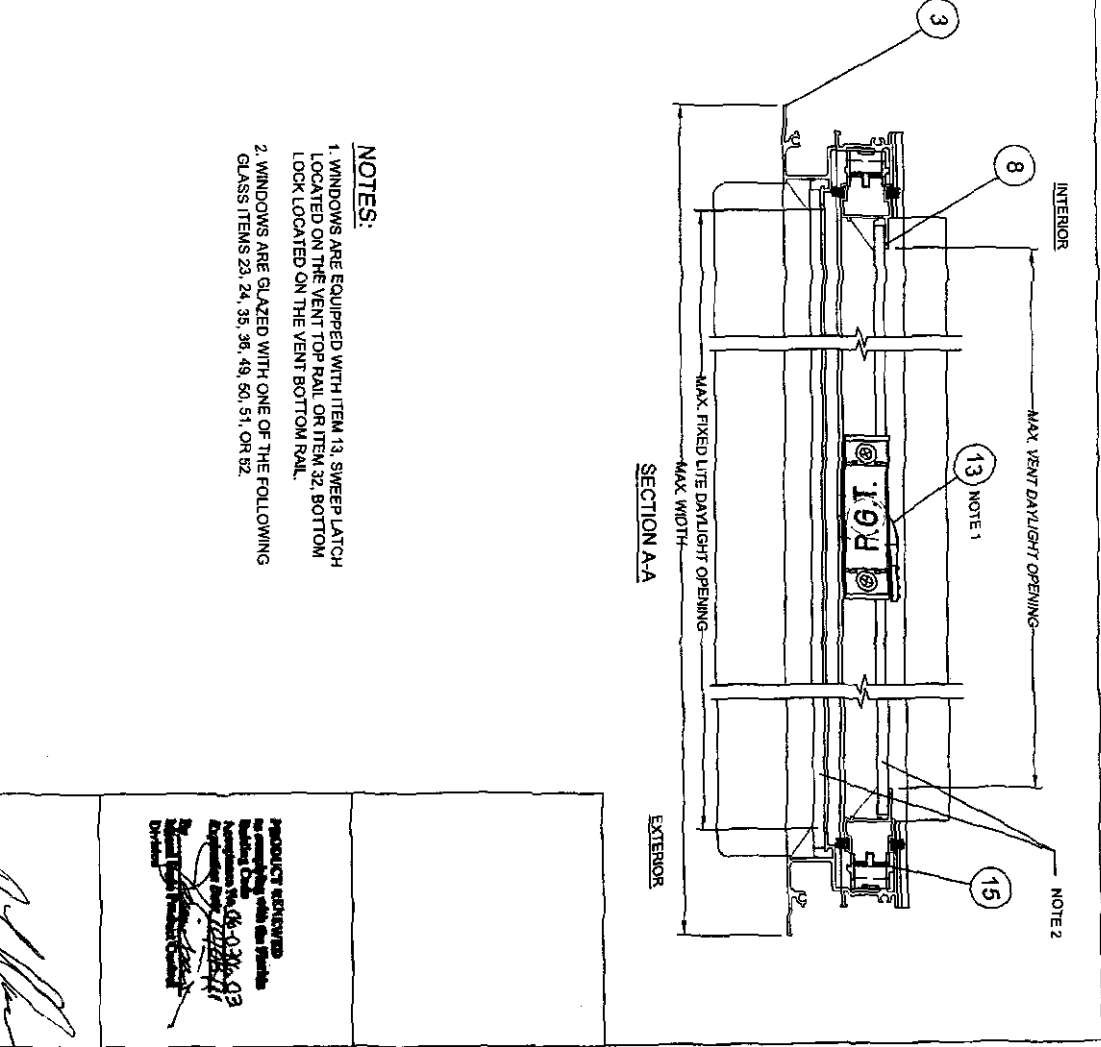
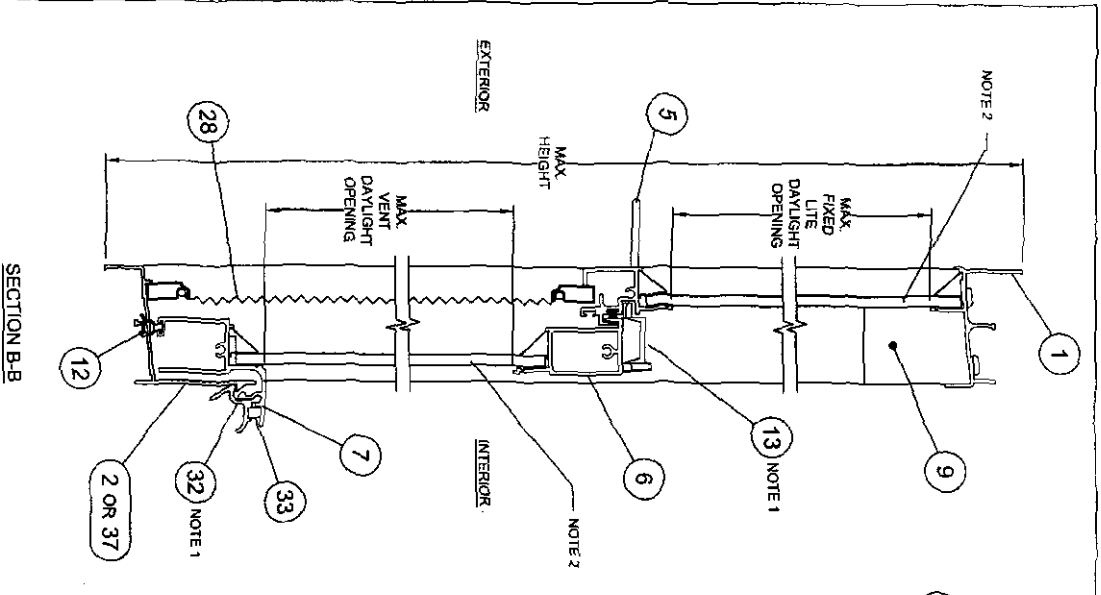
1000 TECHNOLOGY DRIVE
 NOKOMIS, FL 32075
 P.O. BOX 1529
 NOKOMIS, FL 32074



Division	Section
ALUM. SINGLE HUNG WINDOW, W/H.D. MFG. RAIL	SECTION B-B
Scale	Sheet
NTS	4 of 7
Drawing No.	2737
Rev.	H

PRODUCT RETURNED
 IN CONNECTION WITH THE
 INVESTIGATION OF THE
 FAILURE OF THE WINDOW
 TO MEET THE
 REQUIREMENTS OF THE
 BUILDING CODE
 AS APPLIED TO THE
 WINDOW
 BY THE
 BUILDING DEPARTMENT
 OF THE CITY OF
 MIAMI, FLORIDA
 DATE: 08-03-03
 BY: [Signature]
 FOR: [Signature]

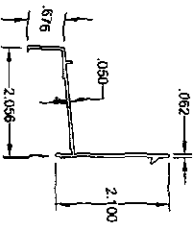
9/22/06
 Robert L. Clark, P.E.
 PE #39712
 Structural



NOTES:

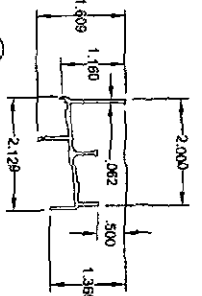
1. WINDOWS ARE EQUIPPED WITH ITEM 13, SWEEP LATCH LOCATED ON THE VENT TOP RAIL OR ITEM 32 BOTTOM LOCK LOCATED ON THE VENT BOTTOM RAIL.
2. WINDOWS ARE GLAZED WITH ONE OF THE FOLLOWING GLASS ITEMS 23, 24, 35, 36, 49, 50, 51, OR 52.

ITEM	DESCRIPTION	PQT #	VENDOR/MAT'L	QWG.#
1	FLANGED FRAME HEAD	62703	6063-16	2703
2	FLANGED FRAME SILL	62706	6063-16	2704
3	FLANGED FRAME JAMB	62705	6063-16	2705
5	HEAVY DUTY FIXED MEETING RAIL	6534525	6063-16	2710
6	VENT TOP RAIL	6534522	6063-16	2707
7	VENT BOTTOM RAIL	6534523	6063-16	2708
8	VENT SIDE RAIL	6534524	6063-16	2709
9	VENT STOP	663857	6063-16	2710
10	VENT CAM INSERT (L.H. & R.H.)	42800	NY ON 505	2748
11	#8 x .750 QUAD PAN HEAD SMS	7534PA	SPENCER OR =	
12	WEATHERSTRIP VINYL BILDA W/LEAF	87P249	TEAM PLASTICS OR =	
13	SWEEP LATCH	77098	MINIATURE DIE CASTING OR =	
14	#8 x .625 PHILLIPS FLAT HEAD SMS	7859	SPENCER OR =	
15	BALANCE		CALDWELL OR =	
16	WEATHERSTRIP .187 x 270 FIN	61062	TEAM PLASTICS OR =	
17	WEATHERSTRIP .187 x 200 FIN	67919	SCHEGEL OR =	
18	BALANCE TAKE-OUT CLIP	7121UM	CALDWELL OR =	
19	SILICON GLAZING SEALANT	62899	DOM. GE OR =	
23	3/16" ANNEALED GLASS			
24	3/16" TEMPERED GLASS			
25	3/16" 1/4" GLAZING BEAD	66196	FLORIDA SCREEN OR =	
26	#8 x 1.000 QUAD PAN HEAD SMS	781PQ	SPENCER OR =	
27	1" x 1.5" OPEN CELL FOAM PAD			
28	SCREEN ASSEMBLY			
32	VENT RAIL BOTTOM LOCK	62721	6063-16	2740
33	VENT RAIL BOTTOM LOCK SPRING	75P99G	5 STL	
34	GLAZING BEAD .1/2" IG	1253	TEAM PLASTICS OR =	
35	1/2" IG GLASS (1/8" TEMPERED, 1/4" AIR SPACE, 1/8" ANNEALED)			
36	1/2" IG GLASS (1/8" ANNEALED, 1/4" AIR SPACE, 1/8" ANNEALED)			
37	FLANGED FRAME SILL	62751	6063-16	2751
47	1" x 1/8" FOAM CASNET			
49	1/4" ANNEALED GLASS			
50	1/4" TEMPERED GLASS			
51	1/2" IG GLASS (3/16" ANNEALED, 3/16" AIR SPACE, 1/8" ANNEALED)			
52	1/2" IG GLASS (3/16" TEMPERED, 3/16" AIR SPACE, 1/8" TEMPERED)			

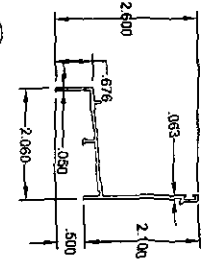


32 #2740, BOTTOM LOCK, 6063-16

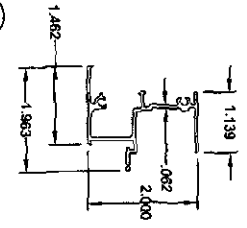
37 #2751, ALT. SILL, 6063-16 (ALTERNATE)



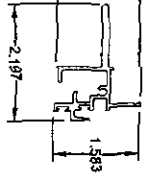
1 #2703, HEAD, 6063-16



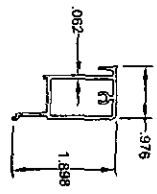
2 #2704, SILL, 6063-16



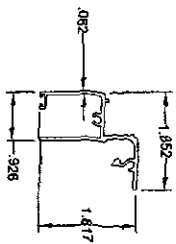
3 #2705, JAMB, 6063-16



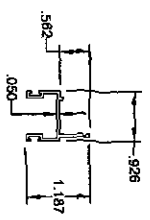
5 #2710, HD MTG. RAIL, 6063-16



6 #2707, VENT TOP RAIL, 6063-16



7 #2708, VENT BOTTOM RAIL, 6063-16



8 #2709, VENT SIDE RAIL, 6063-16



9 #2770, VENT STOP, 6063-16

PROPERTY RESERVED
 Not to be used without the written
 permission of
 PGT
 06-03-06-03
 Approved for use by
 [Signature]
 [Signature]

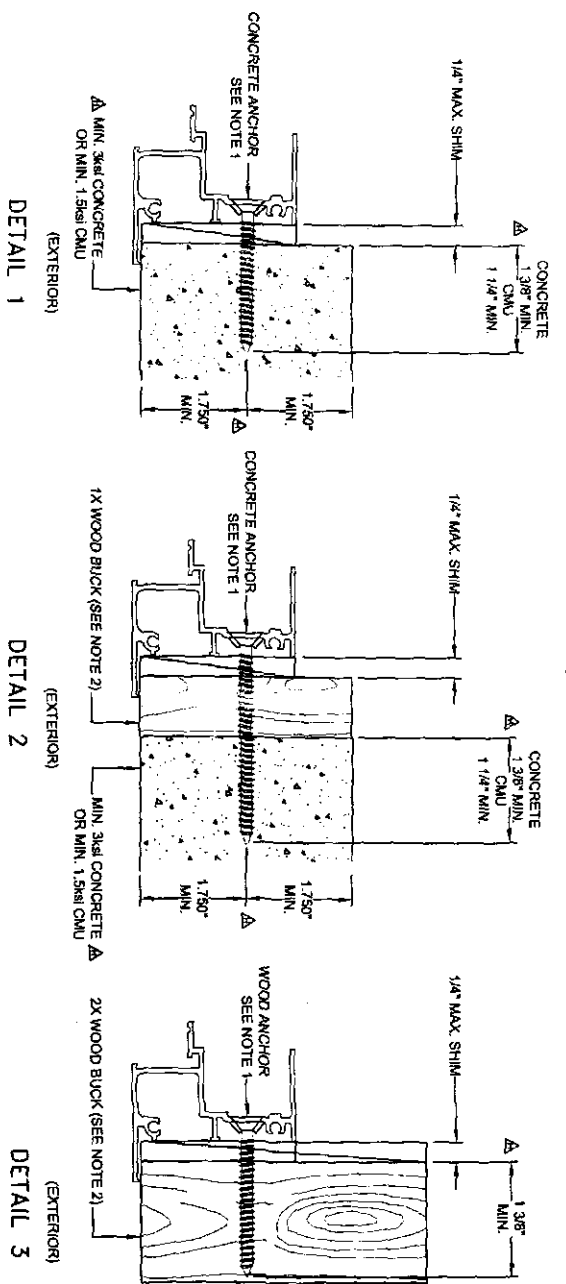
Rev. By:	Date:	Revised:	1	ADD AIR SPACE DIM. TO IG GLASS REQUIRES ITEMS 35, 36, 51 & 52.
Rev. By:	Date:	Revised:	2	UPDATE BOOM
Rev. By:	Date:	Revised:	3	UPDATE MAT'L & DWG NOS.
Rev. By:	Date:	Revised:	4	

PGI
 THE ALUM. SINGLE HUNG WINDOW, W/H.D. MTG. RAIL
 Varsity Barrier

Order Part
 Schedule 5' x 7'

Part No. 2737

9/24/06
 Kenneth Clark, P.E.
 PE #39172
 Structural



TYPICAL JAMB ANCHORAGE

NOTES:

1. MIAMI-DADE COUNTY APPROVED ANCHOR TYPES: 1. ELCO 1/4" TAPCON 2. ELCO 1/4" SS4 CRETE-FLEX MASONRY SCREENS 3. #12 STEEL SCREW (G5)
- Δ FOR CONCRETE APPLICATIONS IN MIAMI-DADE COUNTY, USE ONLY ABOVE APPROVED 1/4" TAPCONS OR SS4 CRETE-FLEX. MINIMUM DISTANCE FROM ANCHOR TO CONCRETE EDGE IS 1.750". FOR WOOD APPLICATIONS USE #12 STEEL SCREWS (G5) OR 1/4" ELCO SS4 CRETE-FLEX ANCHORS.
2. WOOD BUCKS DEPICTED IN THE SECTIONS ON THIS PAGE AS 1x ARE BUCKS WHOSE TOTAL THICKNESS IS LESS THAN 1 1/2". WOOD BUCKS DEPICTED AS 2x ARE 1 1/2" THICK OR GREATER. INSTALLATION IN THE SUBSTRATE OF WOOD BUCKS TO BE ENGINEERED BY OTHERS OR AS APPROVED BY AUTHORITY HAVING JURISDICTION.
3. WOOD BUCKS LESS THAN 1 1/2" THICK ARE OPTIONAL. (PRODUCT MAY BE INSTALLED DIRECTLY TO CONCRETE)
4. FOR ATTACHMENT TO ALUMINUM, THE MATERIAL SHALL BE A MINIMUM STRENGTH OF 8003-T5 AND A MINIMUM OF 1/16" THICK. THE ALUMINUM STRUCTURAL MEMBER SHALL BE OF A SIZE TO PROVIDE FULL SUPPORT TO THE WINDOW JAMB SIMILAR TO THAT SHOWN IN DETAIL 3 ABOVE FOR 2x WOOD BUCKS. THE ANCHOR SHALL BE A #12 SHEET METAL SCREW WITH FULL ENGAGEMENT INTO THE ALUMINUM. IF THESE CRITERIA ARE MET THE PRESSURES AND ANCHOR QUANTITIES SHOWN IN TABLE 2, SHEET 7 FOR ANCHOR TYPES 1 AND 2 IN CONCRETE MAY BE USED.
5. 53 1/8" WIDE x 7/8" HIGH UNITS TESTED TO FULL DESIGN PRESSURE AT THE FOLLOWING SPACING WITH NO HEAD OR SILL ANCHORS (REF. TEST REPORTS FTL-4253 AND FTL-4378):
 - Δ JAMBS: 9" MAX. FROM CORNERS, 8 1/2" BELOW MEETING RAIL AND 17" ABOVE THE LOWER MEETING RAIL ANCHOR 3" MIN. ANCHOR SPACING.
6. FOR INSTALLATION IN MIAMI-DADE COUNTY REFER TO DIMENSIONS OF NOTE 6 AND ANCHOR QUANTITIES PER JAMB IN TABLE 2, SHEET 7. ADDITIONAL ANCHORS, WHEN REQUIRED, TO BE EQUALLY SPACED ABOVE AND BELOW THE MEETING RAIL BETWEEN THE CORNER AND MEETING RAIL ANCHORS.
7. MATERIALS, INCLUDING BUT NOT LIMITED TO STEEL SCREWS, THAT COME INTO CONTACT WITH OTHER DISSIMILAR MATERIALS SHALL MEET THE REQUIREMENTS OF FBC 2004, SECTION 2003.8.4 (SUPPLEMENT 2005).

Revised By: F.K.	Date: 02/22/2006	Revision: REVISE NOTES 1 & 5. REMOVE NOTE 6. RE OUTSIDE MIAMI-DADE COUNTY APPLICATIONS.
Revised By: F.K.	Date: 06/25/2006	Revision: G. REVERSE ANCHOR SITS, AND REVISE ANCHORAGE NOTES
Revised By: F.K.	Date: 12/18/04	Revision: F. UPDATE EXTR. 4 NOTES
Revised By: F.K.	Date: 4/18/01	Revision: J.J.
Drawn By: J.J.	Date: 01/14/06	

1010 TECHNOLOGY DRIVE NORCROSS, FL 34275 P.O. BOX 1520 NORCROSS, FL 34274		
Vahby Builders 544000 NTS 6' x 7' 2737 H		

PRODUCT REVIEWED
 Building Code
 Approved by: *Robert L. Clark, P.E.*
 Expiration Date: 10/21/11

Robert L. Clark, P.E.
 FE 83972
 Structural

9/22/06

QUANTITY OF ANCHORS REQUIRED EACH JAMB

TABLE 2.

ANCHOR/SUBSTRATE	GLASS	WINDOW HEIGHT											
		26"		36 3/8"		50 3/8"		63"		76"			
WINDOW WIDTH	TYPE	3W	2W	1,2/C	3W	2W	1,2/C	3W	2W	1,2/C	3W	2W	1,2/C
19 1/8"	A, G	4	4	4	4	4	4	4	4	4	4	4	4
	B	4	4	4	4	4	4	4	4	4	4	4	4
	H	4	4	4	4	4	4	4	4	4	4	4	4
24"	G, E	4	4	4	4	4	4	4	4	4	4	4	4
	D, F	4	4	4	4	4	4	4	4	4	4	4	4
	A, G	4	4	4	4	4	4	4	4	4	4	4	4
26 1/2"	H	4	4	4	4	4	4	4	4	4	4	4	4
	G, E	4	4	4	4	4	4	4	4	4	4	4	4
	D, F	4	4	4	4	4	4	4	4	4	4	4	4
32"	A, G	4	4	4	4	4	4	4	4	4	4	4	4
	B	4	4	4	4	4	4	4	4	4	4	4	4
	H	4	4	4	4	4	4	4	4	4	4	4	4
37"	G, E	4	4	4	4	4	4	4	4	4	4	4	4
	D, F	4	4	4	4	4	4	4	4	4	4	4	4
	A, G	4	4	4	4	4	4	4	4	4	4	4	4
40"	B	4	4	4	4	4	4	4	4	4	4	4	4
	H	4	4	4	4	4	4	4	4	4	4	4	4
	G, E	4	4	4	4	4	4	4	4	4	4	4	4
44"	D, F	4	4	4	4	4	4	4	4	4	4	4	4
	A, G	4	4	4	4	4	4	4	4	4	4	4	4
	B	4	4	4	4	4	4	4	4	4	4	4	4
48"	H	4	4	4	4	4	4	4	4	4	4	4	4
	G, E	4	4	4	4	4	4	4	4	4	4	4	4
	D, F	4	4	4	4	4	4	4	4	4	4	4	4
53 1/8"	A, G	4	4	4	4	4	4	4	4	4	4	4	4
	B	4	4	4	4	4	4	4	4	4	4	4	4
	H	4	4	4	4	4	4	4	4	4	4	4	4

ANCHOR TYPE/SUBSTRATE KEY

3W = #12 SCREW IN WOOD
 2W = 1/4" SS4 CRETE-FLEX IN WOOD
 1,2/C = 1/4" TAPCON OR 1/4" SS4 CRETE-FLEX IN CONCRETE
 (SEE APPLICATION NOTES AND DETAILS ON SHEET 6)
 NOTE: ANCHORS NOT REQUIRED IN HEAD OR SILL

GLASS TYPE KEY

A. 3/16" TEMPERED
 B. 3/16" ANNEALED
 C. 1/2" LG. (1/8" T, 1/4" AIR SPACE, 1/8" T)
 D. 1/2" LG. (1/8" T, 1/4" AIR SPACE, 1/8" T)
 E. 1/2" LG. (3/16" T, 3/16" AIR SPACE, 1/8" T)
 F. 1/2" LG. (3/16" T, 3/16" AIR SPACE, 1/8" T)
 G. 1/4" TEMPERED
 H. 1/4" ANNEALED

Revised By: F.K. 08/23/06
 Date: 05/25/06
 F.K. 12/16/04
 F.K. 4/18/01

Revised By: J.J.
 Date: 07/14/05

REVISIONS: 1
 REVISIONS: 2

1070 TECHNOLOGY DRIVE
 NOKOMIS, FL 32475
 P. O. BOX 5250
 NOKOMIS, FL 32424



ANCHORAGE SPACING, 1/1 WINDOWS
 ALUM. SINGLE HUNG WINDOW, W/H.D. MTG. RAIL

SH4000
 NTS
 7
 7

2737
 H

Robert L. Clark, P.E.
 PE #39712
 Structural

PRODUCT REVIEWED
 in compliance with the Florida
 Building Code
 Approved By: 08-0306-03
 Date: 08/23/06
 Signature: [Signature]
 Title: [Title]