



BUILDING CODE COMPLIANCE OFFICE (BCCO)
PRODUCT CONTROL DIVISION

MIAMI-DADE COUNTY, FLORIDA
METRO-DADE FLAGLER BUILDING
140 WEST FLAGLER STREET, SUITE 1603
MIAMI, FLORIDA 33130-1563
(305) 375-2901 FAX (305) 375-2908
www.buildingcodeonline.com

NOTICE OF ACCEPTANCE (NOA)

PGT Industries
1070 Technology Drive
Nokomis, FL 34275

SCOPE:

This NOA is being issued under the applicable rules and regulations governing the use of construction materials. The documentation submitted has been reviewed by Miami-Dade County Product Control Division and accepted by the Board of Rules and Appeals (BORA) to be used in Miami Dade County and other areas where allowed by the Authority Having Jurisdiction (AHJ).

This NOA shall not be valid after the expiration date stated below. The Miami-Dade County Product Control Division (In Miami Dade County) and/or the AHJ (in areas other than Miami Dade County) reserve the right to have this product or material tested for quality assurance purposes. If this product or material fails to perform in the accepted manner, the manufacturer will incur the expense of such testing and the AHJ may immediately revoke, modify, or suspend the use of such product or material within their jurisdiction. BORA reserves the right to revoke this acceptance, if it is determined by Miami-Dade County Product Control Division that this product or material fails to meet the requirements of the applicable building code.

This product is approved as described herein, and has been designed to comply with the Florida Building Code, including the High Velocity Hurricane Zone.

DESCRIPTION: Series 2"x Heavy Wall Aluminum Tube Clipped Mullion - L.M.I.

APPROVAL DOCUMENT: Drawing No. 6223, titled "2" Heavy Wall, Elevations Aluminum Tube Clipped Mullion", sheets 1 through 5 of 5, dated 04/28/00, with revision "C" dated 05/03/06, prepared by PGT Industries, signed and sealed by Robert L.Clark, P.E., bearing the Miami-Dade County Product Control Renewal Stamp with the Notice of Acceptance number and expiration date by the Miami-Dade County Product Control Division.

MISSILE IMPACT RATING: Large and Small Missile Impact

LABELING: Each unit shall bear a permanent label with the manufacturer's name or logo, city, state and following statement: "Miami-Dade County Product Control Approved", unless otherwise noted herein.

RENEWAL of this NOA shall be considered after a renewal application has been filed and there has been no change in the applicable building code negatively affecting the performance of this product.

TERMINATION of this NOA will occur after the expiration date or if there has been a revision or change in the materials, use, and/or manufacture of the product or process. Misuse of this NOA as an endorsement of any product, for sales, advertising or any other purposes shall automatically terminate this NOA. Failure to comply with any section of this NOA shall be cause for termination and removal of NOA.

ADVERTISEMENT: The NOA number preceded by the words Miami-Dade County, Florida, and followed by the expiration date may be displayed in advertising literature. If any portion of the NOA is displayed, then it shall be done in its entirety.

INSPECTION: A copy of this entire NOA shall be provided to the user by the manufacturer or its distributors and shall be available for inspection at the job site at the request of the Building Official.

This NOA **renews NOA # 04-0528.06** and consists of this page 1 and evidence pages E-1 and E-2, as well as approval document mentioned above.

The submitted documentation was reviewed by **Jaime D. Gascon, P.E.**



J. Gascon
5/16/06

NOA No 06-0125.08
Expiration Date: June 28, 2011
Approval Date: June 08, 2006
Page 1

NOTICE OF ACCEPTANCE: EVIDENCE SUBMITTED

A. DRAWINGS

1. Manufacturer's dic drawings and sections.
2. Drawing No **6223**, titled 2" Heavy Wall, Elevations Aluminum Tube Clipped Mullion, Sheets 1 through 5 of 5, dated 04/28/00, with revision "C" on 05/03/06, prepared by PGT Industries, signed and sealed by Robert L. Clark, P.E.

B. TESTS

1. Test reports on 1) Uniform Load Static Air Pressure Test, per FBC, TAS 202-94
2) Large Missile Impact Test, FBC, TAS 201-94
3) Cyclic Loading Test, per FBC, TAS 203-94
along with installation diagram of a pair of fixed aluminum windows (OO configuration) 60" x 54" mullied together with a 1x 2 x std. wall mullion, prepared by Fenestration Testing Laboratory, Inc., Test Report No. **FTL-2902**, dated 01/05/01, signed and sealed by Antonio Acevedo, P.E.
"Submitted under NOA# 04-0528.06"
2. Test reports on 1) Uniform Load Static Air Pressure Test, per FBC, TAS 202-94
2) Large Missile Impact Test, FBC, TAS 201-94
3) Cyclic Loading Test, per FBC, TAS 203-94
along with installation diagram of a pair of fixed aluminum windows (OO configuration) 80" x 76" mullied together with a 1x 4 x std. wall mullion, prepared by Fenestration Testing Laboratory, Inc., Test Report No. **FTL-2903**, dated 01/05/01, signed and sealed by Antonio Acevedo, P.E.
"Submitted under NOA# 04-0528.06"
3. Test reports on 1) Uniform Load Static Air Pressure Test, per FBC, TAS 202-94
2) Large Missile Impact Test, FBC, TAS 201-94
3) Cyclic Loading Test, per FBC, TAS 203-94 discussed
along with installation diagram of a pair of fixed aluminum windows with a transom lite (O/OO configuration) mullied together with a 1x 2 x 3/4" wall vertical and a 2 x 6" x 1/4" wall horizontal mullion, prepared by Fenestration Testing Laboratory, Inc., Test Report No. **FTL-2975**, dated 01/23/01, signed and sealed by Antonio Acevedo, P.E.
"Submitted under NOA# 04-0528.06"

C. CALCULATIONS

1. Revised Anchor Calculations and structural analysis, complying with FBC-2004, prepared by PGT Industries, dated 01/23/06, signed and sealed by Robert L. Clark, P.E.



Jaime D. Gascon, P.E.
Chief, Product Control Division
NOA No 06-0125.08
Expiration Date: June 28, 2011
Approval Date: June 08, 2006

PGT Industries

NOTICE OF ACCEPTANCE: EVIDENCE SUBMITTED

D. QUALITY ASSURANCE

1. Miami Dade Building Code Compliance Office (BCCO).

E. MATERIAL CERTIFICATIONS


1. None.

F. STATEMENTS

1. Statement letter of conformance, dated 01/23/06, signed and sealed by Robert L. Clark, P.E.
2. Statement letter of no financial interest, dated 01/23/06 and sealed by Robert L. Clark, P.E.

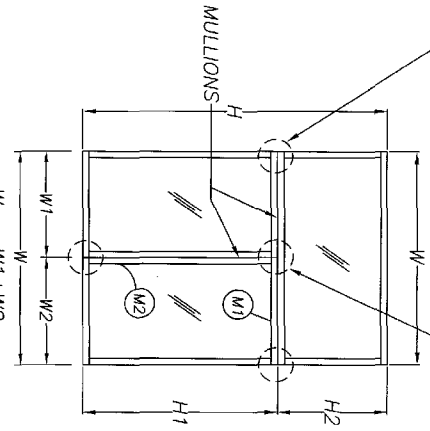
G. OTHER

1. Notice of Acceptance No. **04-0528.06**, issued to PGT Industries for their 2" x Heavy Wall-Aluminum Tube Clipped Mullion, approved on 07/15/04 and expiring on 06/28/06.
2. Letter from consultant dated 04/21/06, stating that the product is in compliance with the Florida Building Code (FBC).



Jaime D. Gascon, P.E.
Chief, Product Control Division
NOA No 06-0125.08
Expiration Date: June 28, 2011
Approval Date: June 08, 2006

ANCHORS DETAIL "B",
"C" OR "D" AT BOTH
ENDS AND AT BOTTOM

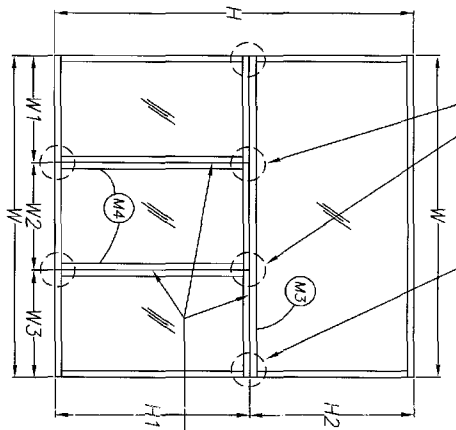


(2) WINDOWS MULLED
W/ONE ABOVE

FOR DETERMINING MAX ALLOWABLE
DESIGN PRESSURE SEE TABLES
ON PAGE 5

M1) MAX OPENING = H OR H1+H2
MULL LENGTH = W OR W1+W2
M2) MAX OPENING = W OR W1+W2
MULL LENGTH = H1

ANCHORS DETAIL A

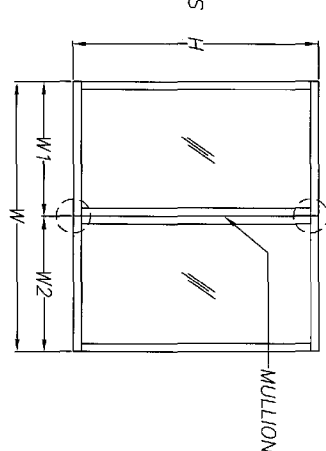


MULTIPLE WINDOWS MULLED
W/ONE ABOVE

FOR DETERMINING MAX ALLOWABLE
DESIGN PRESSURE SEE TABLES
ON PAGE 5

M3) MAX OPENING = H OR H1+H2
MULL LENGTH = W OR W1+W2+W3
M4) MAX OPENING = W1+W2 OR W2+W3
MULL LENGTH = H1

ANCHORS DETAIL "B",
"C" OR "D" AT BOTH
ENDS AND AT BOTTOMS



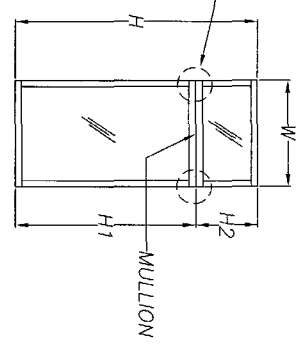
(2) WINDOWS MULLED TOGETHER

FOR DETERMINING MAX ALLOWABLE
DESIGN PRESSURE SEE TABLES
ON PAGE 5

MAX OPENING = W OR W1+W2
MULL LENGTH = H

ANCHORS DETAIL "B",
"C" OR "D" BOTH ENDS

ANCHORS DETAIL "B",
"C" OR "D" BOTH ENDS



(1) WINDOW MULLED
W/ONE ABOVE

FOR DETERMINING MAX ALLOWABLE
DESIGN PRESSURE SEE TABLES
ON PAGE 5

MAX OPENING = H OR H1+H2
MULL LENGTH = W

NOTES:

1. THE 33 1/3% STRESS INCREASE HAS NOT BEEN USED IN THE DESIGN OF THIS PRODUCT. FOR ANCHORAGE TYPE, QUANTITY AND LOCATION, REFER TO SHEETS 2, 3 AND 5.
2. WINDOWS AND DOORS OR COMBINATIONS THEREOF MAY BE MULLED TO A MAXIMUM OF (7) UNITS.
3. MULLIONS ARE APPROVED FOR IMPACT AND NON-IMPACT APPLICATIONS.
4. REFERENCE TEST REPORTS: FTL-2902, 2903 AND 2975.

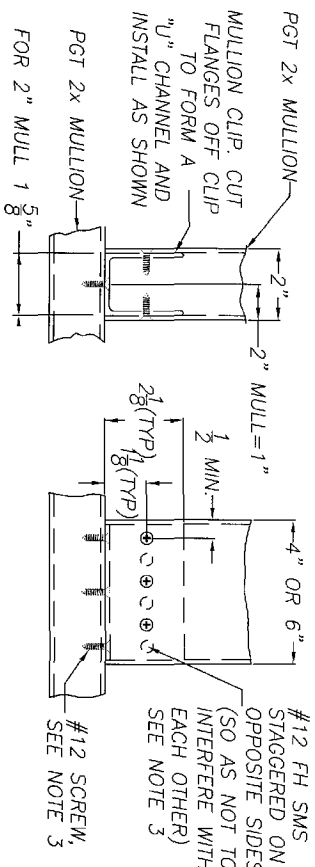
[Signature]
Robert L. Clark, P.E.
PE #39712
Structural

TO BE USED ONLY WITH PGI INDUSTRIES PRODUCTS

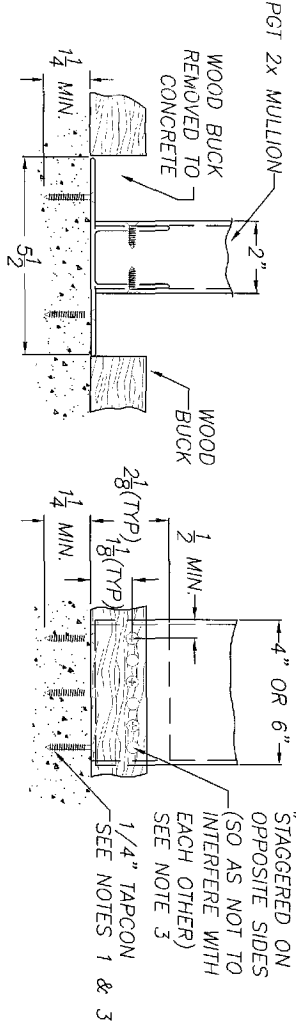
	1070 TECHNOLOGY DRIVE NOKOMIS, FL 34475 NOKOMIS, FL 34474
Title: ALUMINUM TUBE CLIPPED MULLION 2" HEAVY WALL ELEVATIONS	Revisions: B-REVISE ANCHORAGE C-NO CHG THIS SHI
Revisd By: F.K. Date: 1/9/06	Revisd By: B-REVISE ANCHORAGE Date: 5/3/06
Drawn By: P.L.P. Date: 4/28/00	Description: 2" HEAVY WALL ELEVATIONS

Series/Model:	Scale:	Sheet:	Drawing No.	Rev.
MULLS	NTS	1 of 5	6223	C

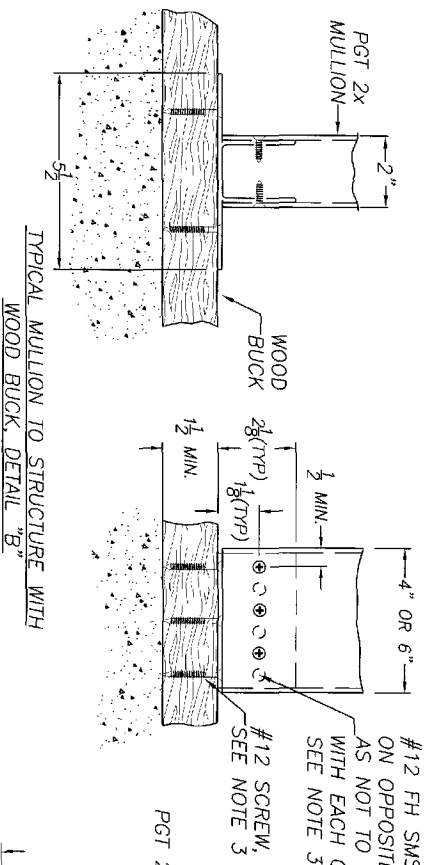
PROJECT ASSUMES
no conflict with the Florida
Building Code
Approved By: 08-0125-08
Responsible Date: 04/28/11
By: [Signature]
Title: [Signature]
Division:



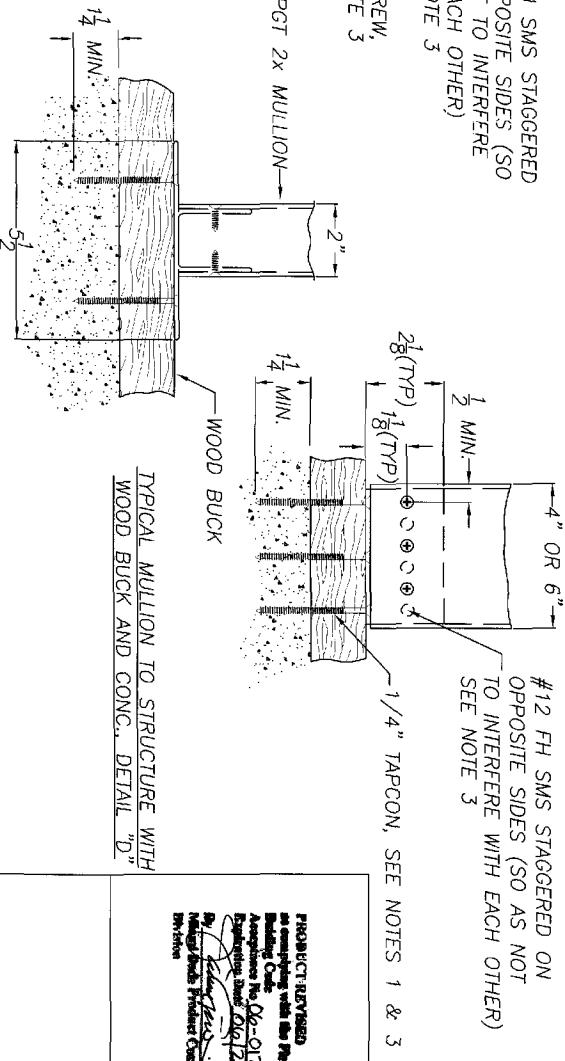
TYPICAL MULLION TO MULLION INSTALLATION, DETAIL "A"



TYPICAL MULLION TO STRUCTURE WITH WOOD BUCK REMOVED FROM CONC., DETAIL "C"



TYPICAL MULLION TO STRUCTURE WITH WOOD BUCK, DETAIL "B"



TYPICAL MULLION TO STRUCTURE WITH WOOD BUCK AND CONC., DETAIL "D"

PRODUCT DESIGNER
 In compliance with the Florida Building Code
 Building Code, the Florida Building Code
 Amendments No. 06-0125.08
 and the Florida Building Code
 Amendments No. 06-0125.08
 I hereby certify that the design
 of this work complies with the
 Florida Building Code
 Building Code

NOTES:

1. FOR CONCRETE APPLICATIONS IN MIAMI-DADE COUNTY, USE ONLY MIAMI-DADE COUNTY APPROVED MASONRY ANCHORS. MINIMUM DISTANCE FROM CENTER OF ANCHORS TO CONCRETE EDGE IS 2 1/2". ELCO 1/4" SS4 CRETE-FLEX ANCHORS MAY BE USED INSTEAD OF 1/4" TAPCONS PROVIDED EMBEDMENT IS INCREASED TO 1 3/4".
2. 1/4" TAPCONS OR ELCO 1/4" SS4 CRETE-FLEX MASONRY ANCHORS MAY BE USED INSTEAD OF #12 SCREWS FOR WOOD APPLICATIONS.
3. FOR MULL SIZE AND QUANTITY OF ANCHORS SEE SHEET 5. FOR ANCHOR LOCATIONS SEE SHEET 3. QUANTITY OF PINNING SCREWS FOR MULL-TO-CLIP TO BE HALF THE QUANTITY OF ANCHORS FROM CLIP-TO-OPENING.
(MINIMUM OF 2 SCREWS PER CLIP)
4. IMPORTANT: QUANTITY OF ANCHORS SHOWN ABOVE ARE FOR PICTORIAL REPRESENTATION ONLY. FOR CORRECT QUANTITY OF ANCHORS, REFER TO CHARTS 1 AND 2 ON SHEET 5. FIND THE APPLICABLE MULL SIZE AND PRESSURE REQUIRED FOR YOUR SPECIFIC APPLICATION.
5. REFERENCE TEST REPORTS: FTL-2902, 2903 AND 2975.

TO BE USED ONLY WITH PGT INDUSTRIES PRODUCTS



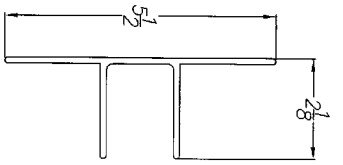
Revised By:	Date:	Revisions:
F.K.K.	1/9/06	B-REVISION ANCHORAGE
Revised By:	Date:	Revisions:
F.K.K.	5/3/04	C-NO CHG THIS SHIT
Drawn By:	Date:	
P.J.P.	4/28/00	

Description: 2" HEAVY WALL, CLIP INSTALLATION DETAIL

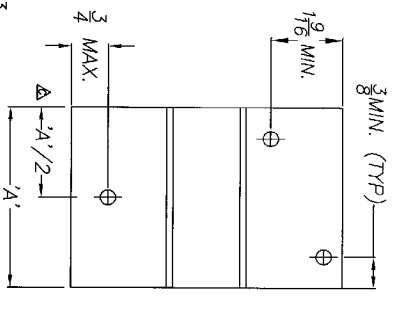
[Signature]
 Robert L. Clark, P.E.
 PE #39712
 Structural

1070 TECHNOLOGY DRIVE
 NOKOMIS, FL 34225
 P.O. BOX 1529
 NOKOMIS, FL 34274

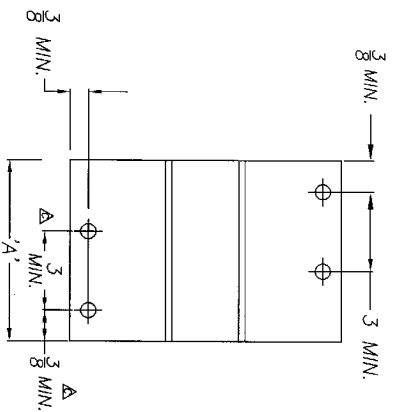
Title:	Scale:	Sheet:	Drawing No.
ALUMINUM TUBE CLIPPED MULLION	NTS	2 of 5	6223
Series/Model:	Scale:	Sheet:	Rev:
	NTS	2 of 5	C



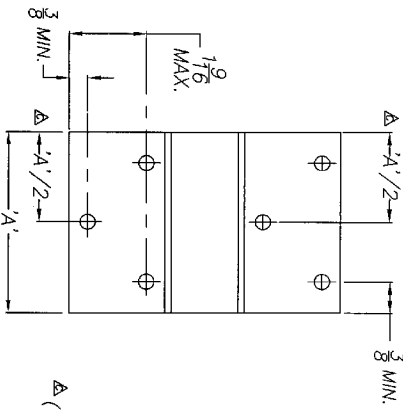
2" MULL CLIP
EXTRUSION DWG #513



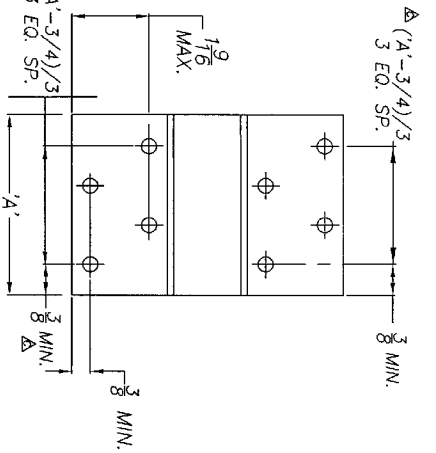
(3) ANCHOR LOCATIONS



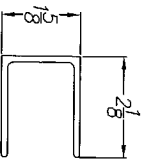
(4) ANCHOR LOCATIONS



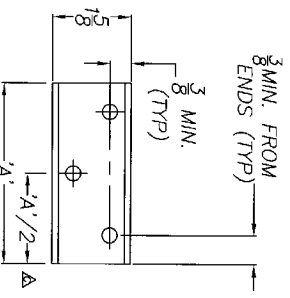
(6) ANCHOR LOCATIONS



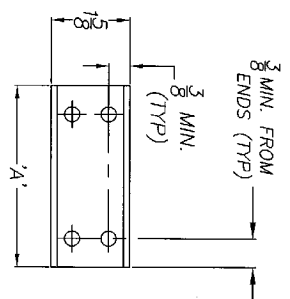
(8) ANCHOR LOCATIONS



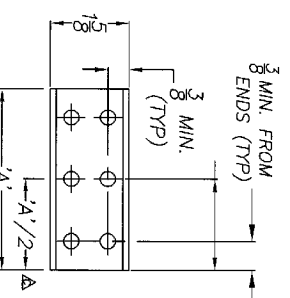
2" MULL CLIP
W/TABS REMOVED
EXTRUSION DWG #513



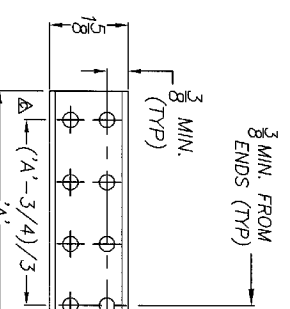
(3) ANCHOR LOCATIONS



(4) ANCHOR LOCATIONS



(6) ANCHOR LOCATIONS



(8) ANCHOR LOCATIONS

PRODUCT REVISED
in compliance with the Florida
Building Code
Amendment No. 06-0125-08
Adopted by the Board of
Regulation on 06/17/08
By: *[Signature]*
Product Development
Division

CLIP LENGTH CHART FOR 1x MULL	
MULL SIZE	'A'
2 x 4 x 1/4	3 7/16
2 x 6 x 1/4	5 7/16

NOTES:

- IMPORTANT: QUANTITY OF ANCHORS SHOWN ARE FOR PICTORIAL REPRESENTATION ONLY. FOR CORRECT QUANTITY OF ANCHORS, PLEASE REFER TO CHARTS 1 AND 2 ON SHEET 5. FIND THE CORRECT MULL SIZE AND PRESSURE REQUIRED FOR YOUR SPECIFIC APPLICATION.
- REFERENCE TEST REPORTS: FTL-2902, 2903 AND 2975.

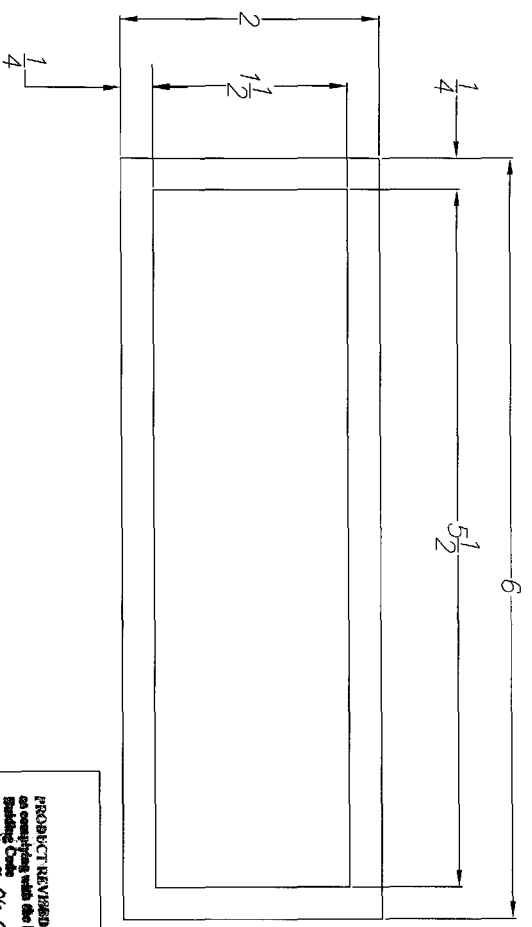
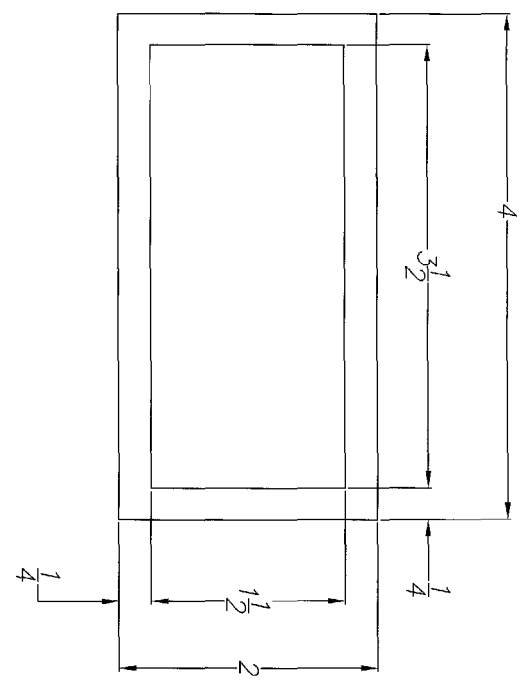
TO BE USED ONLY WITH PGT INDUSTRIES PRODUCTS



1070 TECHNOLOGY DRIVE
NOKOMIS, FL 34275
P.O. BOX 1529
NOKOMIS, FL 34274

Revised By: F.K.	Date: 1/9/06	Revisions: 8-HDD 3-4 HOLE APP.
Revised By: F.K.	Date: 3/3/06	Revisions: C-ADD MISSING DIM.
Drawn By: P.J.P.	Date: 4/28/00	
Title: ALUMINUM TUBE CLIPPED MULLION		
Series/Model: MULLS	Scale: NTS	Sheet: 3 of 5
Description: 2" HEAVY WALL, ANCHOR LOCATIONS		Drawing No. 6223
		Rev: C

[Signature]
5/5/06
Robert L. Ocker, P.E.
Pl. #3577-2
Structural



2X HEAVY WALL MULLS
 MAT'L: 6063-T6

PRODUCT REVISED
 on consulting with the Florida
 Building Code
 Amendment No. 06-0125-08
 Enforcement Date: 06/12/11
 By: [Signature]
 My Head Buck Product Control
 Division

TO BE USED ONLY WITH PGT INDUSTRIES PRODUCTS



Revised By: F.K.	Date: 1/9/06	Revisions: B-NO CHG. THIS SHI.
Drawn By: P.J.P.	Date: 4/28/00	Revisions: C-NO CHG THIS SHI

Description: 2" HEAVY WALL, MULLION PROFILES

Title:	ALUMINUM TUBE CLIPPED MULLION				
Series/Model:	MULLS	Scale:	1X	Sheet:	4 of 5
Drawing No.:	6223	Rev.:	C		

[Signature]
 Robert L. Clark, P.E.
 PE #39712
 Structural

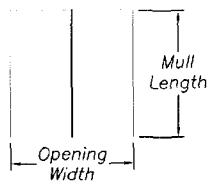
1070 TECHNOLOGY DRIVE
 NOKOMIS, FL 34275
 P.O. BOX 15229
 NOKOMIS, FL 34274

NOTE:
 1. REFERENCE TEST REPORT FTL-2902, 2903 AND 2975

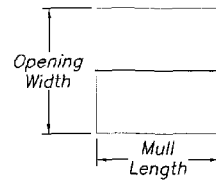
CHART 2. - 2x6x.250

		OPENING WIDTH IN INCHES																				
		50		60		70		80		90		100		110		120		130		160		
ANCHOR TYPE & QTY.		(3) A	(4) A	(3) A	(4) A	(3) A	(4) A	(3) A	(4) A	(3) A	(4) A	(3) A	(4) A	(3) A	(4) A	(3) A	(4) A	(3) A	(4) A	(3) A	(4) A	
		(6) B	(8) B	(6) B	(8) B	(6) B	(8) B	(6) B	(8) B	(6) B	(8) B	(6) B	(8) B	(6) B	(8) B	(6) B	(8) B	(6) B	(8) B	(6) B	(8) B	
MULL LENGTH IN INCHES	42	170	170	170	170	170	170	170	170	170	170	170	170	170	170	170	170	170	170	170	170	
	48	170	170	170	170	170	170	170	170	170	170	170	170	170	170	170	170	170	170	170	170	170
	50.625	170	170	170	170	170	170	170	170	170	170	170	170	170	170	170	170	170	170	170	170	170
	54	170	170	170	170	170	170	170	170	170	170	170	170	170	170	170	170	170	170	170	170	170
	60	170	170	170	170	170	170	170	170	170	170	170	170	170	170	170	170	170	170	170	170	170
	63	170	170	170	170	170	170	170	170	170	170	170	170	170	170	170	170	170	170	170	170	170
	66	170	170	170	170	170	170	170	170	170	170	170	168	170	162	170	159	170	158	170	158	170
	72	170	170	170	170	170	170	165	170	154	170	146	170	140	170	136	170	134	170	133	170	170
	76	170	170	170	170	168	170	154	170	143	170	135	170	129	170	125	166	122	162	119	159	170
	78	170	170	170	170	162	170	148	170	138	170	130	170	124	165	119	159	116	155	113	151	170
	84	170	170	166	170	148	170	134	170	124	166	117	155	111	148	106	142	103	137	98	130	170
	90	170	170	153	170	136	170	123	164	113	151	106	141	100	133	96	127	92	123	86	116	170
	96	165	170	142	170	125	167	113	151	104	139	97	129	91	123	87	115	83	109	77	98	170
	108	144	170	123	163	109	141	98	125	89	112	83	102	78	95	73	88	70	83	63	73	170
	111	140	170	119	154	105	133	94	118	86	106	80	97	75	89	71	83	67	78	61	68	170
	144	105	108	89	90	78	78	69	69	61	61	56	56	51	51	47	47	44	44	37	37	170

Vertical Mull



Horizontal Mull



Multiple Mull Units

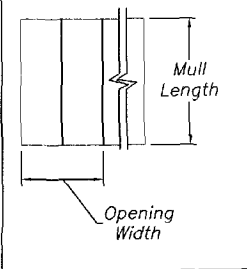


CHART 1. - 2x4x.250

		OPENING WIDTH IN INCHES									
		50	60	70	80	90	100	110	120	130	160
ANCHOR TYPE & QTY.		(3) A	(3) A	(3) A	(3) A	(3) A	(3) A	(3) A	(3) A	(3) A	(3) A
		(6) B	(6) B	(6) B	(6) B	(6) B	(6) B	(6) B	(6) B	(6) B	(6) B
MULL LENGTH IN INCHES	42	170	170	170	170	170	170	170	170	170	170
	48	170	170	170	170	170	170	170	170	170	170
	50.625	170	170	170	170	170	170	170	170	170	170
	54	170	170	170	170	170	170	170	170	170	170
	60	170	170	170	170	170	170	170	170	170	170
	63	170	170	170	170	170	166	162	160	159	159
	66	170	170	170	170	170	154	149	146	145	145
	72	170	170	166	152	142	135	129	125	123	122
	76	170	170	154	141	131	124	119	115	112	109
	78	170	167	149	136	127	119	114	110	107	104
	84	177	153	136	124	114	107	102	98	94	90
	90	163	141	125	113	104	97	92	88	85	79
	96	151	129	112	100	91	83	78	73	69	63
	108	107	90	78	69	62	57	53	49	47	41
	111	98	83	72	63	57	52	48	45	43	37
	144	45	37	32	28	26	23	21	20	18	16

NOTES:

1. MAXIMUM ALLOWABLE PRESSURE IN PSF.
2. DESIGN IS BASED ON OPENING WIDTH. FOR MULTIPLE UNITS, CONSIDER ONLY TWO ADJACENT UNITS AT A TIME. SEE SHEET 1.
3. REFERENCE TEST REPORT FTL-2902, 2903 AND 2975
4. ANCHOR TYPES: A. 1/4" TAPCON
B. #12 SCREW

PRODUCT REVISED
 as complying with the Florida
 Building Code
 Acceptance No. 06-0125-08
 Expiration Date 06/12/11
 By *[Signature]*
 Mount Union Product Control
 Division

TO BE USED ONLY WITH PGT INDUSTRIES PRODUCTS

[Signature]
 4/5/06
 Robert L. Clark, P.E.
 PE #39712
 Structural



1070 TECHNOLOGY DRIVE
 NOKOMIS, FL 34275
 P.O. BOX 1529
 NOKOMIS, FL 34274

Revised By: F.K.	Date: 1/9/06	Revisions: B-REVISE ANCHORAGE
Revised By: F.K.	Date: 5/3/06	Revisions: C-NO CHG THIS SHIT
Drawn By: P.J.P.	Date: 4/28/00	
Description: 2" HEAVY WALL, PRESSURE CHARTS 1 & 2		
Title: ALUMINUM TUBE CLIPPED MULLION		
Series/Model: MULLS	Scale: NTS	Sheet: 5 of 5
Drawing No. 6223	Rev: C	